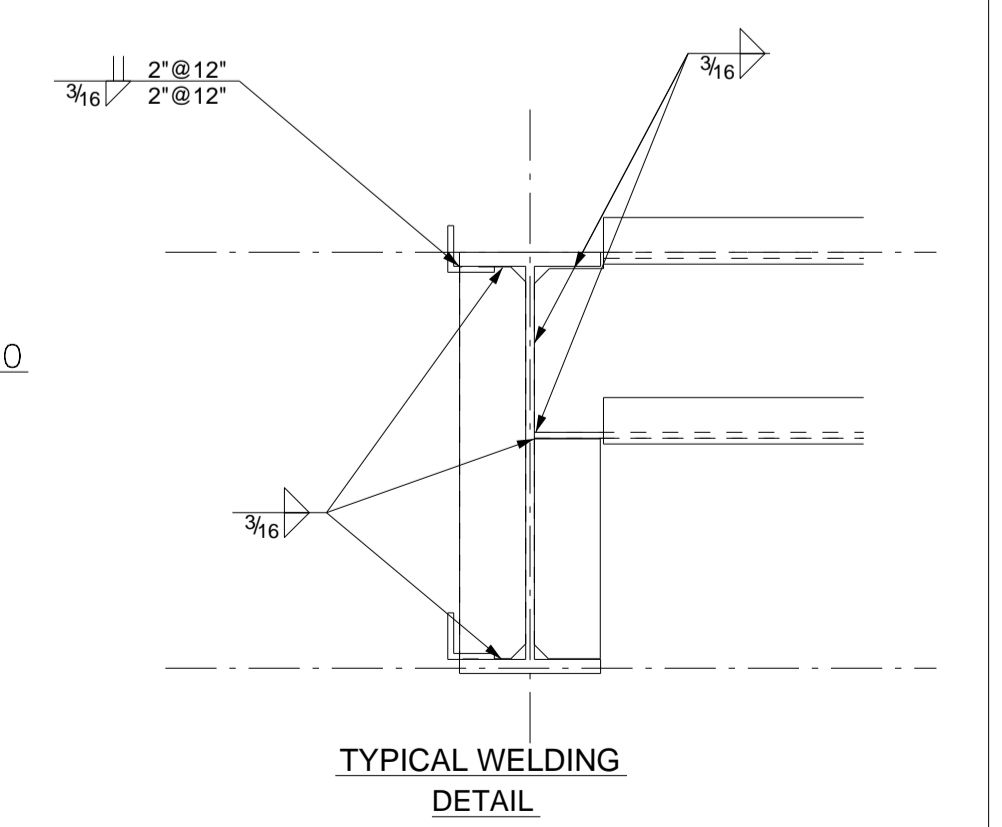


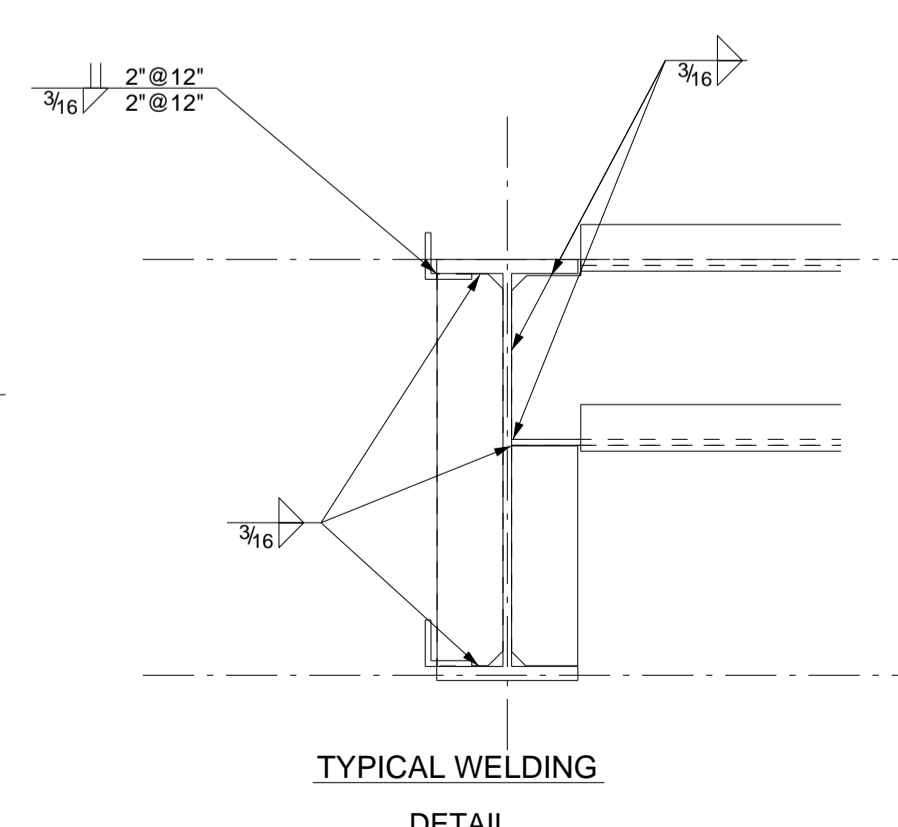
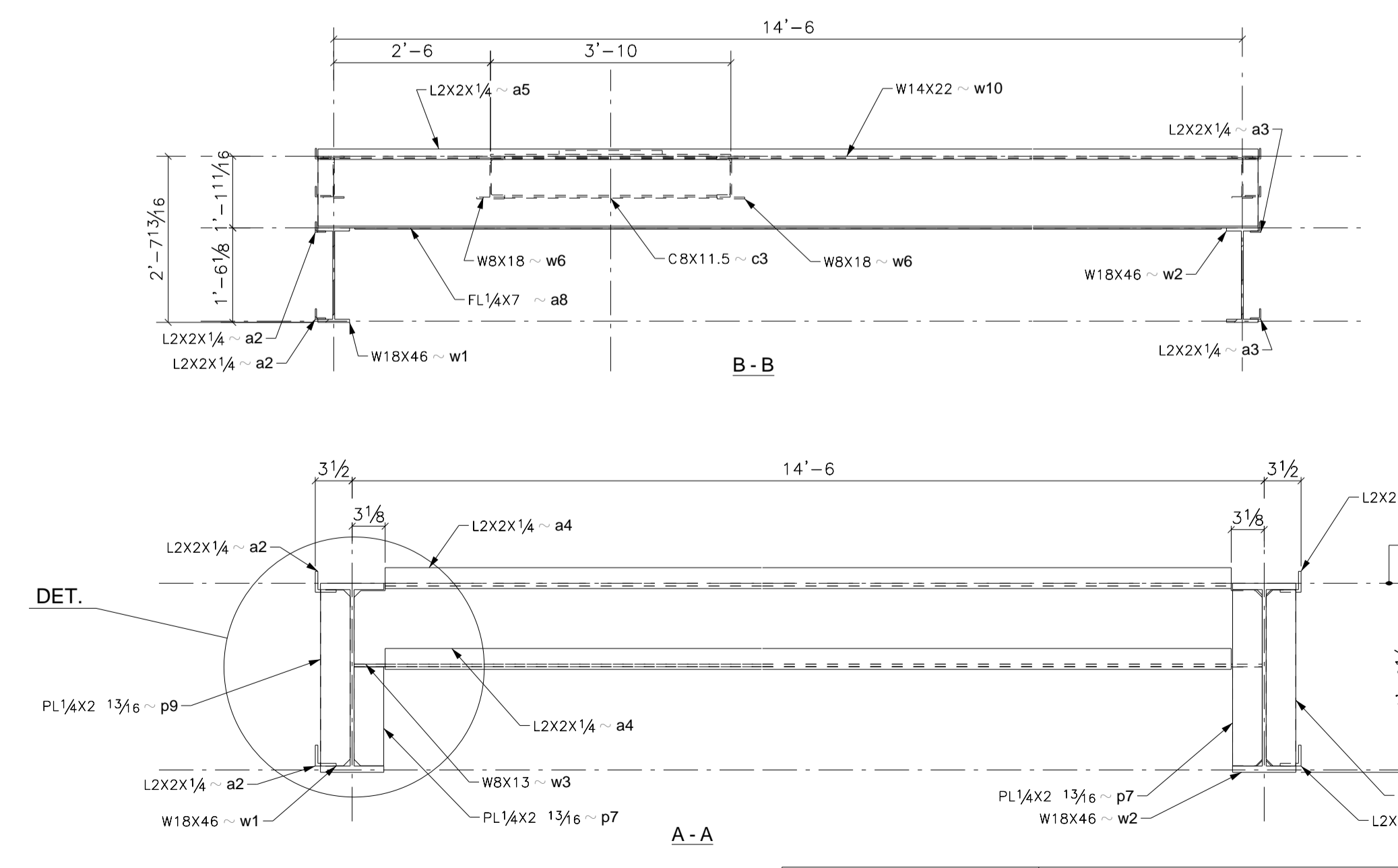
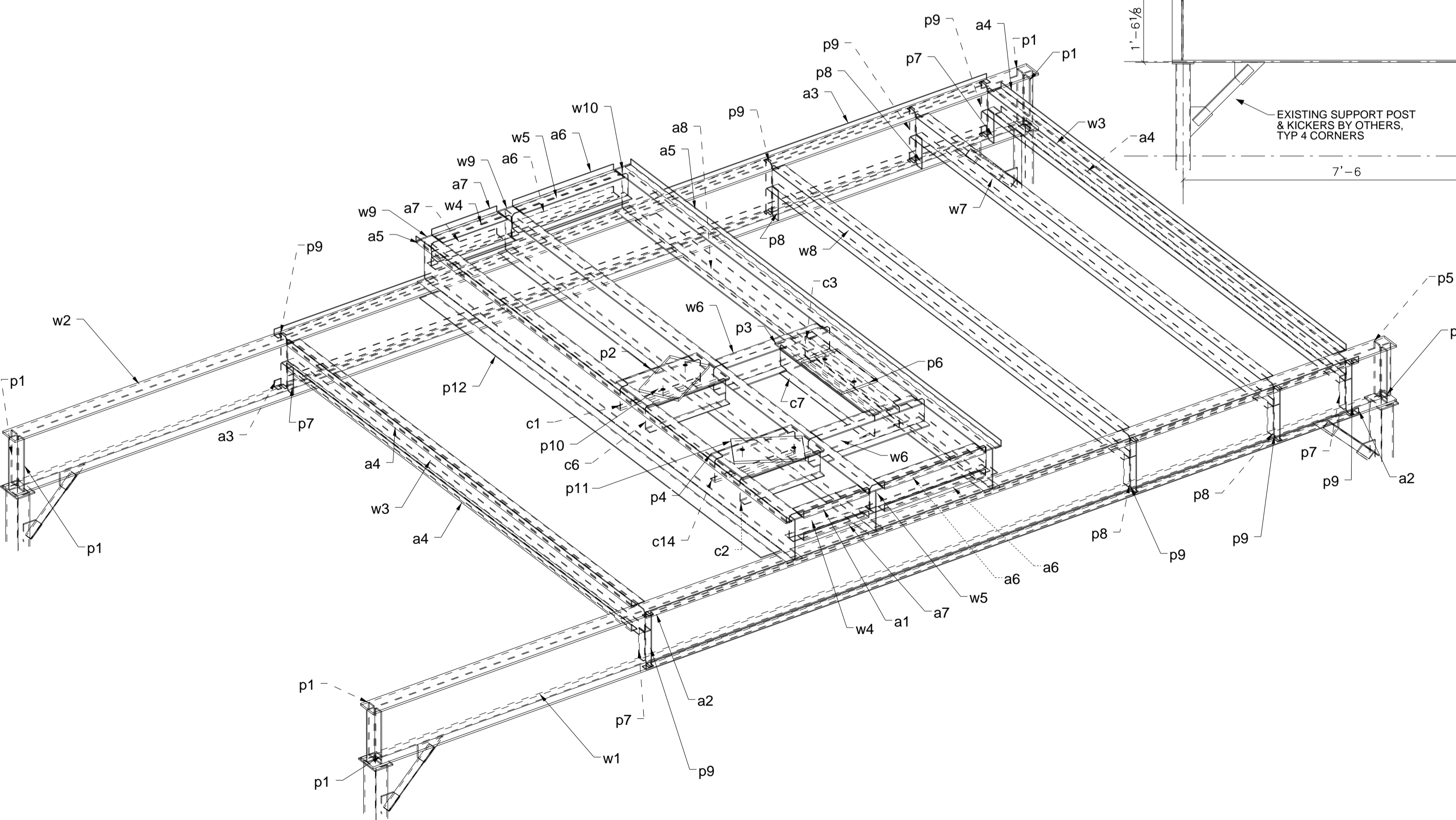
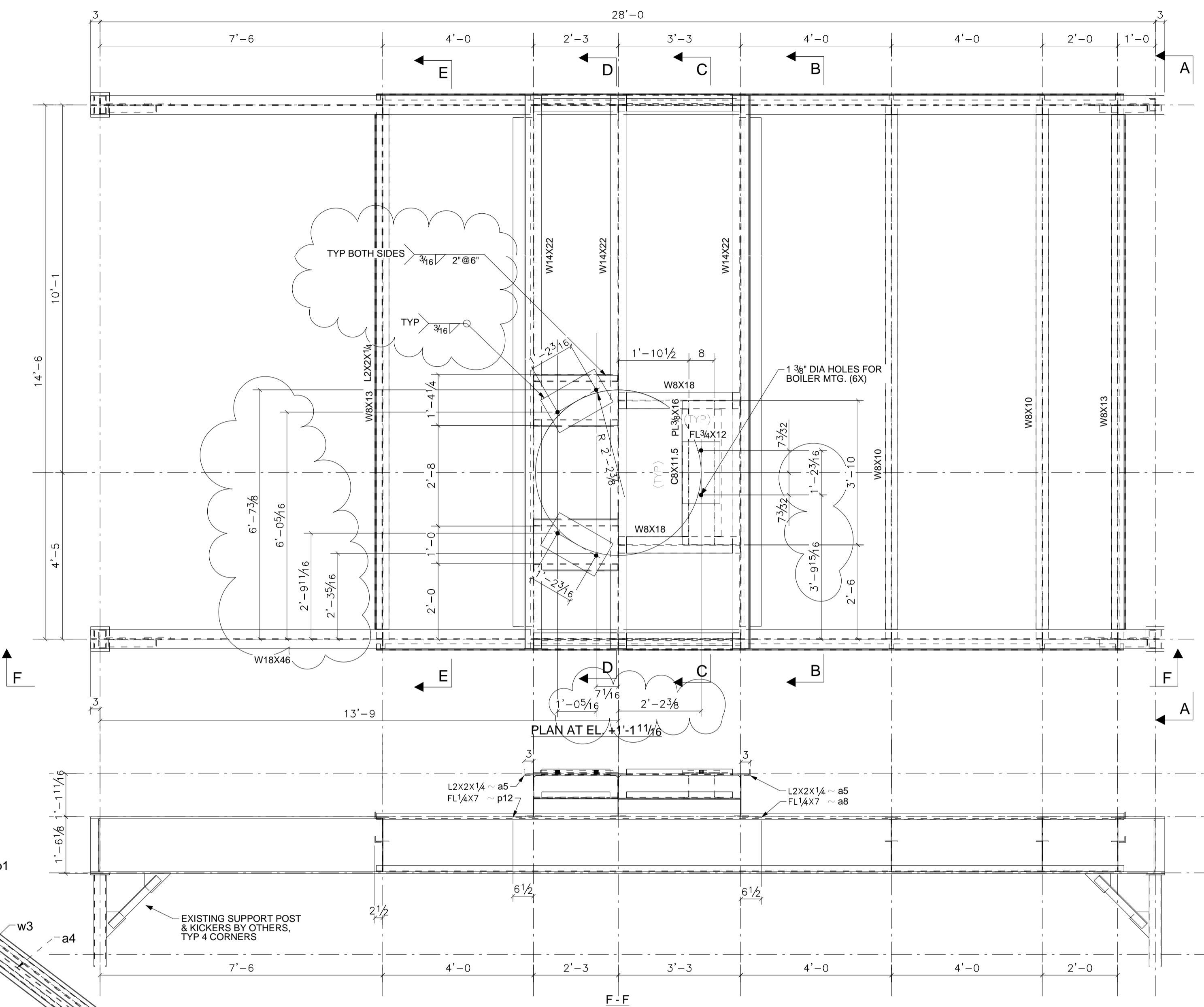
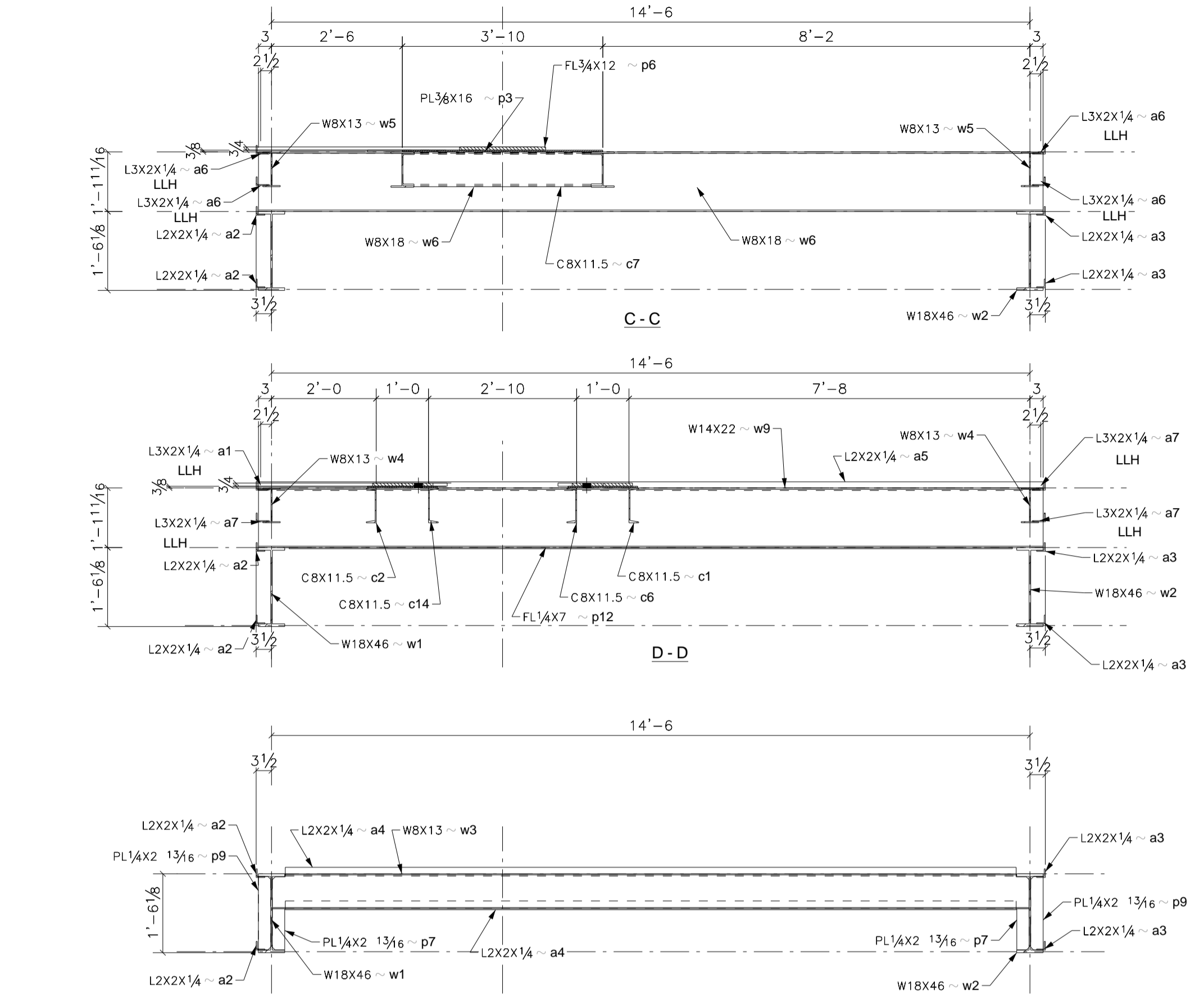
BILL OF MATERIAL						
Qty	Uo	Part	Description	Length	Weight	Remarks
Est		Mark			Total	
1	1	B1	BOILER PLATFORM			
1	1	w2	W18X46	28'-6"	1309	S03
1	1	a1	L3X2X1/4	1'-9 3/4"	7	
2	2	a2	L2X2X1/4	19'-10"	127	
2	2	a3	L2X2X1/4	19'-10"	127	
4	4	a4	L2X2X1/4	13'-11 11/16"	178	
2	2	a5	L2X2X1/4	15'-0"	96	
4	4	a6	L3X2X1/4	2'-9 3/4"	46	
3	3	a7	L3X2X1/4	1'-9 3/4"	22	
1	1	a8	FL1/4"X7"	13'-9 15/16"	82	
1	1	c1	C8X11.5	2'-2 3/4"	26	
3	3	c2	C8X11.5	2'-2 3/4"	77	
2	2	c3	C8X11.5	3'-9 3/4"	87	
6	6	p1	PL3/8"X2 13/16"	1'-4 7/8"	30	
1	1	p2	PL3/8"X16"	2'-3"	46	
1	1	p3	PL3/8"X16"	3'-10"	78	
1	1	p4	PL3/8"X16"	2'-3"	46	
1	1	p5	FL3/8"X3 1/2"	0'-5 1/2"	2	
1	1	p6	FL3/8"X4"	0'-6"	3	
4	4	p7	PL1/4"X2 13/16"	0'-9 7/16"	8	
4	4	p8	PL1/4"X2 13/16"	0'-9 1/2"	8	
8	8	p9	PL1/4"X2 13/16"	1'-4 7/8"	27	
1	1	p10	FL3/4"X12"	1'-7 3/4"	50	
2	2	p11	FL3/4"X12"	1'-7 3/4"	100	
1	1	p12	FL1/4"X7"	13'-9 15/16"	82	
1	1	p13	L6X4X1/2	0'-6 1/16"	8	
1	1	w1	W18X46	28'-1 7/8"	1294	w1
2	2	w3	W8X13	14'-5 5/8"	378	
2	2	w4	W8X13	2'-2 3/4"	58	
2	2	w5	W8X13	3'-2 3/4"	84	
1	1	w6	W8X18	3'-2 3/4"	58	
1	1	w7	W8X10	14'-5 5/8"	146	
1	1	w8	W8X10	14'-5 5/8"	146	
2	2	w9	W14X22	15'-0"	663	
1	1	w10	W14X22	15'-0"	331	
1	1	w11	W8X18	3'-2 3/4"	58	
2	2		3/4"Ø A325N BOLT	0'-2"	1	
2	2		3/4"Ø A325N BOLT	0'-2 1/4"	1	



<b>DATES</b> 02-24-09 For Approval 03-26-09 For Information 03-12-09 For Fabrication	<b>NO.</b> 1 2 3	<b>DESCRIPTION</b> OPEN HOLES 13/16" BOLTS A325N PAINT PER SPEC/GC	<b>BY</b> TMC TMC TMC	<b>PROJECT NAME</b> FRITO-LAY <b>LOCATION</b> CHARLOTTE, NC <b>CONTRACTOR</b> IRT CONSTRUCTION <b>ARCHITECT</b> FULLER CONSULTING EN	<b>DATE</b> 02/17/2009 <b>DRAWN BY</b> TMAC	<b>DESCRIPTION</b> TC #2 BOILER PLATFORM	<b>JOB NO.</b> 25111 <b>DRG NO.</b> E1
---	---------------------------	---	--------------------------------	---	--	---	---

**BILL OF MATERIAL**

Qty	Qty	Piece	Description	Length	Weight	Remarks	Adv	Steel
Est.	Total	Mark			Total		Mat #	Grade
1	1	B1	BEAM					
1	1	w1	W18X46	28'-6"	1309	S02		A992
1	1	a1	L3X2X1/4	1'-9 3/4"	7			A36
2	2	a2	L2X2X1/4	19'-10"	127			A36
2	2	a3	L2X2X1/4	19'-10"	127			A36
4	4	a4	L2X2X1/4	13'-11 11/16"	178			A36
2	2	a5	L2X2X1/4	15'-0"	96			A36
4	4	a6	L3X2X1/4	2'-9 3/4"	46			A36
3	3	a7	L3X2X1/4	1'-9 3/4"	22			A36
1	1	a8	FL1/4"X7"	13'-9 15/16"	82			A36
1	1	c1	C8X11.5	2'-2 3/4"	26			A36
1	1	c2	C8X11.5	2'-2 3/4"	26			A36
1	1	c3	C8X11.5	3'-9 3/4"	44			A36
1	1	c6	C8X11.5	2'-2 3/4"	26			A36
1	1	c7	C8X11.5	3'-9 3/4"	44			A36
1	1	c14	C8X11.5	2'-2 3/4"	26			A36
6	6	p1	PL3/8"X2 13/16"	1'-4 7/8"	30			A36
1	1	p2	PL3/8"X16"	2'-3"	46			A36
1	1	p3	PL3/8"X16"	3'-10"	78			A36
1	1	p4	PL3/8"X16"	2'-3"	46			A36
2	2	p5	PL3/8"X2 13/16"	1'-4 7/8"	10			A36
1	1	p6	FL3/4"X12"	1'-7 3/4"	50			A36
4	4	p7	PL1/4"X2 13/16"	0'-9 7/16"	8			A36
4	4	p8	PL1/4"X2 13/16"	0'-9 1/2"	8			A36
8	8	p9	PL1/4"X2 13/16"	1'-4 7/8"	27			A36
1	1	p10	FL3/4"X12"	1'-7 3/4"	50			A36
1	1	p11	FL3/4"X12"	1'-7 3/4"	50			A36
1	1	p12	FL1/4"X7"	13'-9 15/16"	82			A36
1	1	w2	W18X46	28'-6"	1309			A992
2	2	w3	W8X13	14'-5 5/8"	378			A992
2	2	w4	W8X13	2'-2 3/4"	58			A992
2	2	w5	W8X13	3'-2 3/4"	84			A992
2	2	w6	W8X18	3'-2 3/4"	116			A992
1	1	w7	W8X10	14'-5 5/8"	146			A992
1	1	w8	W8X10	14'-5 5/8"	146			A992
2	2	w9	W14X22	15'-0"	663			A992
1	1	w10	W14X22	15'-0"	331			A992



DATE	NO.	DESCRIPTION	BY	PROJECT NAME	LOCATION
02-24-09	1	For Approval	TMC	FRITO-LAY	CHARLOTTE, NC
03-12-09	2	For Fabrication	TMC		
03-26-09	3	For Clarification / Information	TMC		

STEEL	ASTM	A992	UNO	PROJECT NAME	FRITO-LAY
ELECTRODES	E70XX LH	UNO	LOCATION	CHARLOTTE, NC	
WELDS	1/4" FILLETS or	UNO	CONTRACTOR	IRT CONSTRUCTION	
	OPEN HOLES	13/16	UNO	ARCHITECT	FULLER CONSULTING EN
	BOLTS	A325N	UNO		
	PAINT	PER SPEC/GC	UNO		

DATE	NO.	DESCRIPTION	BY	PROJECT NAME	LOCATION
02-24-09	1	For Approval	TMC	FRITO-LAY	CHARLOTTE, NC
03-12-09	2	For Fabrication	TMC		
03-26-09	3	For Clarification / Information	TMC		

DATE	NO.	DESCRIPTION	BY	PROJECT NAME	LOCATION
02-24-09	1	For Approval	TMC	FRITO-LAY	CHARLOTTE, NC
03-12-09	2	For Fabrication	TMC		
03-26-09	3	For Clarification / Information	TMC		

DATE	NO.	DESCRIPTION	BY	PROJECT NAME	LOCATION
02-24-09	1	For Approval	TMC	FRITO-LAY	CHARLOTTE, NC
03-12-09	2	For Fabrication	TMC		
03-26-09	3	For Clarification / Information	TMC		