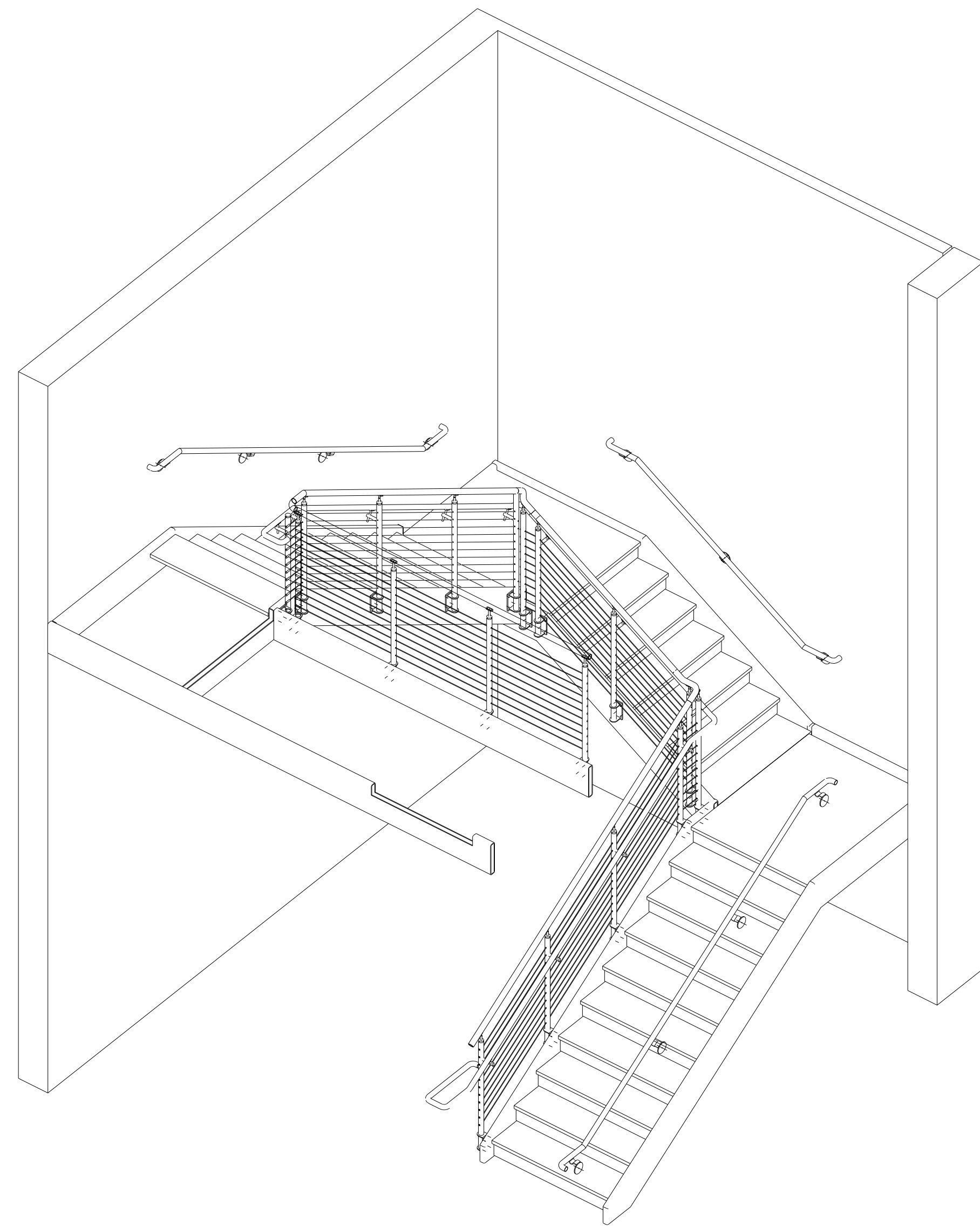
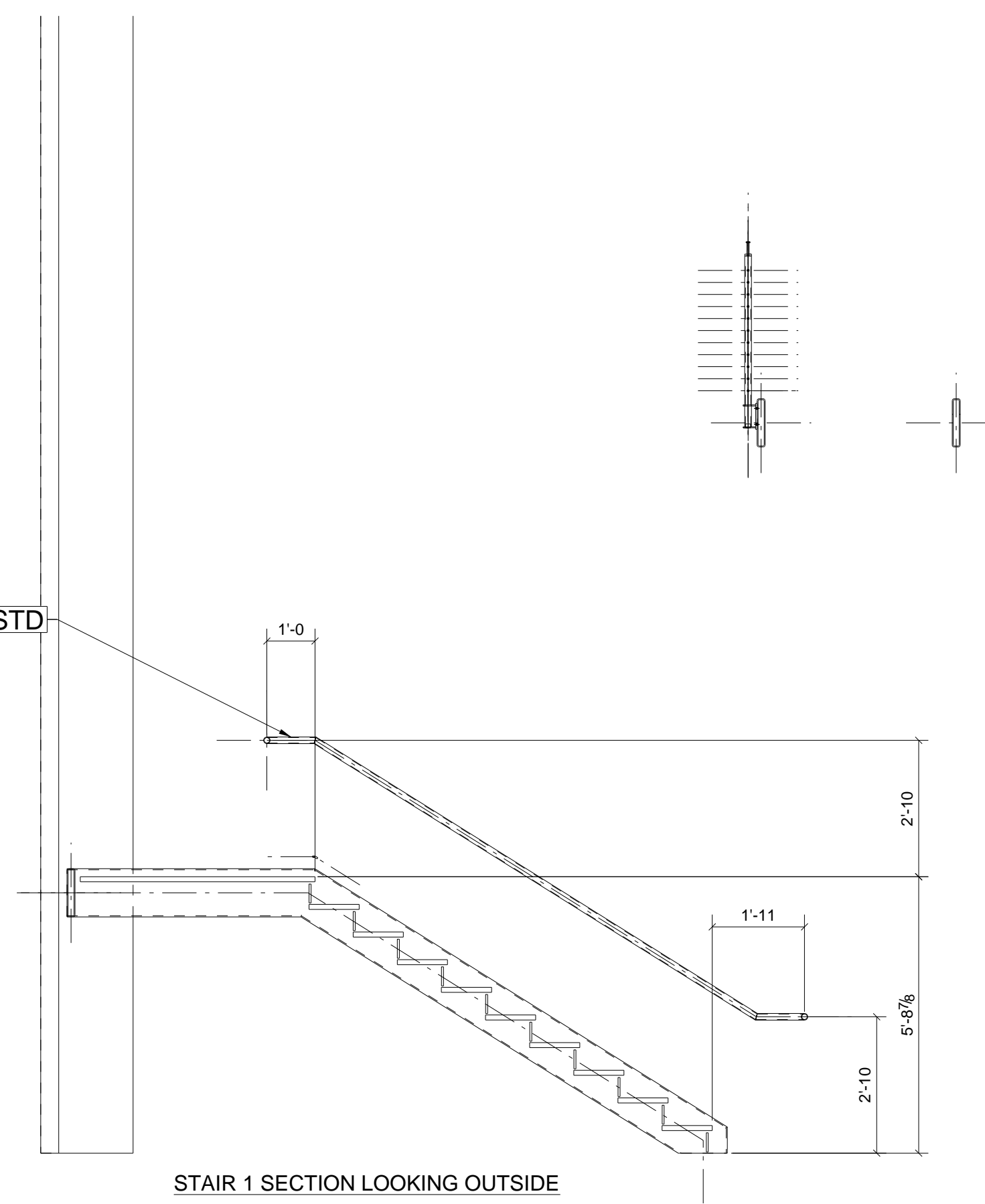


REV.	DESCRIPTION	DATE	TMc	MT
A	For Approval	07/02/10	TMc	MT
GENERAL NOTES				
MATERIAL: A992 U/N ELECTRODES: E70xx LH REF. DRG.			JOB USE	
HOLES: 13/16 DIA. U/N CONNS: 3/4" Ø A325-N-ST			SHOP	
SURFACE PREP. AND PAINT:			APPROVAL	
PER SPECS 1 S/C STD. PRIMER				
DESCRIPTION: STAIR 101A CABLE RAIL				
PROJ. NAME: DIST. WAREHOUSE for ALDI, INC.			DRAWN BY: TMc	
LOCATION: JEFFERSON, GEORGIA			DATE: 07/02/2010	
CONTRACTOR: STEEL FAB / C.M. STE ARCH./ENG. AE DESIGN, INC			CHKD. BY: TAN	
			DATE:	
C.M. STEEL, INC. 8629 OLD DOWD ROAD CHARLOTTE/NC 28219 704-394-6626			JOB No. 25274	
			DRG. No. REV. ME1 A	

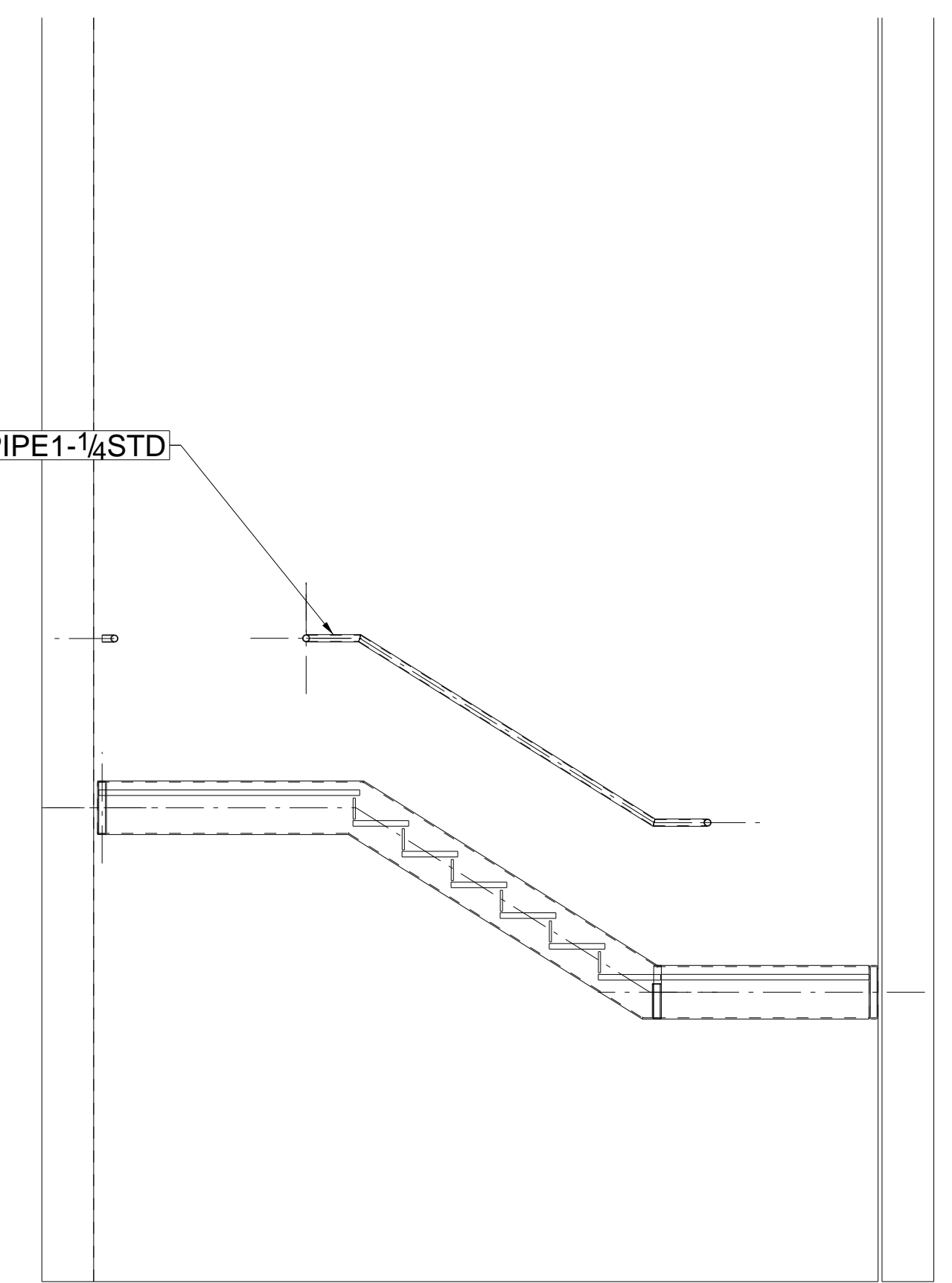


3WR1 - PIPE 1-1/4 STD



STAIR 1 SECTION LOOKING OUTSIDE

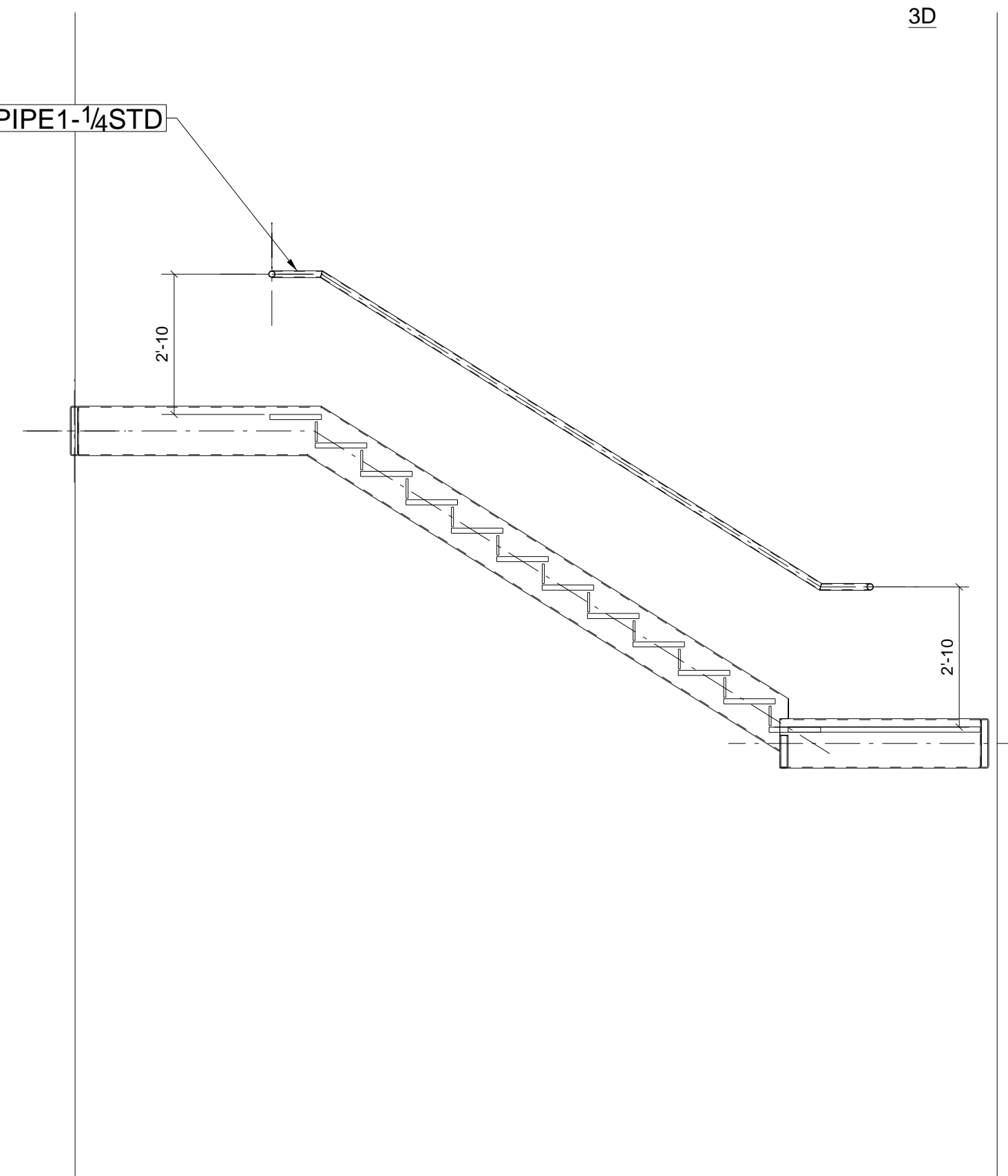
3WR2 - PIPE 1-1/4 STD



STAIR 2 SECTION LOOKING OUTSIDE

3D

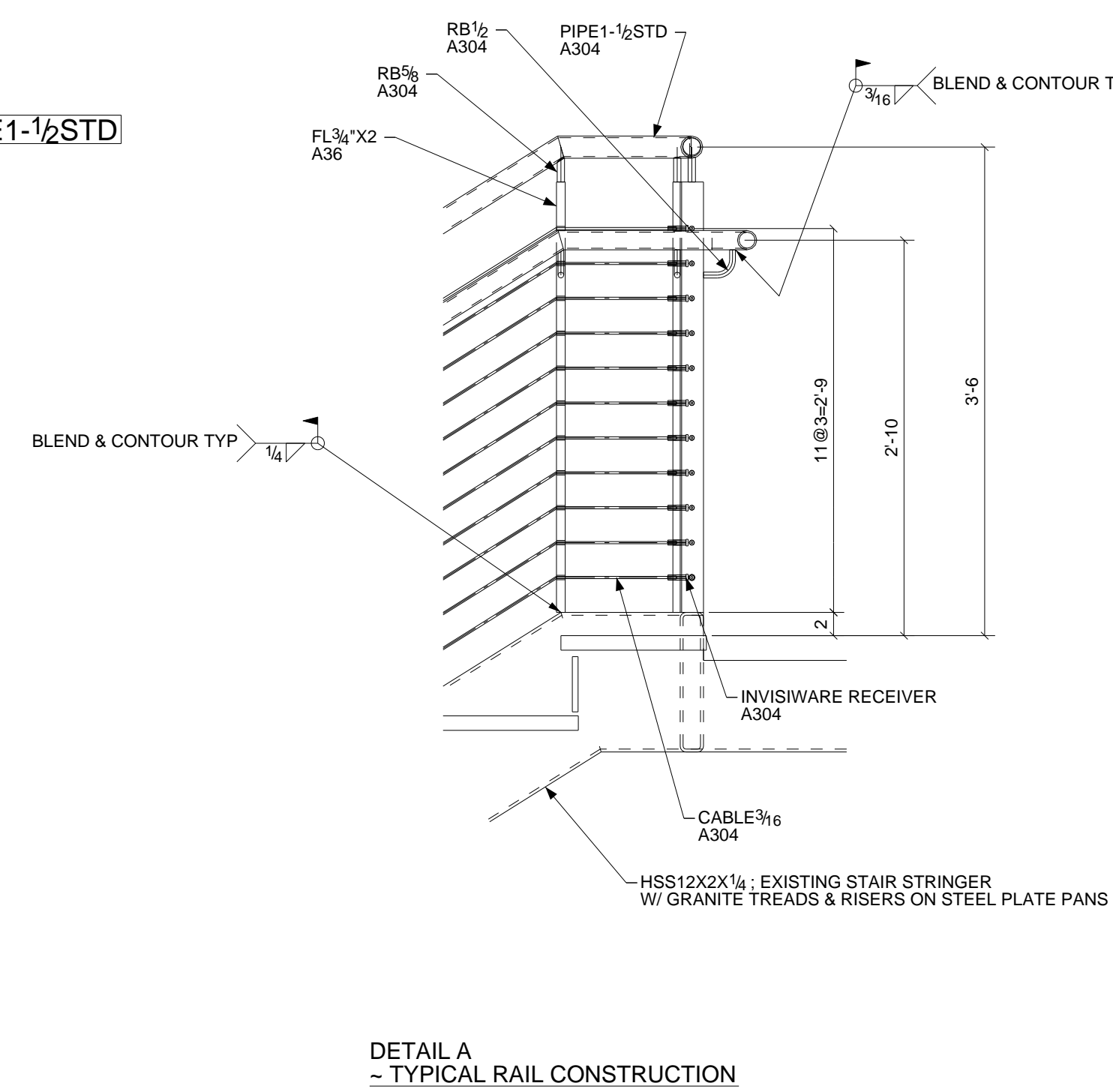
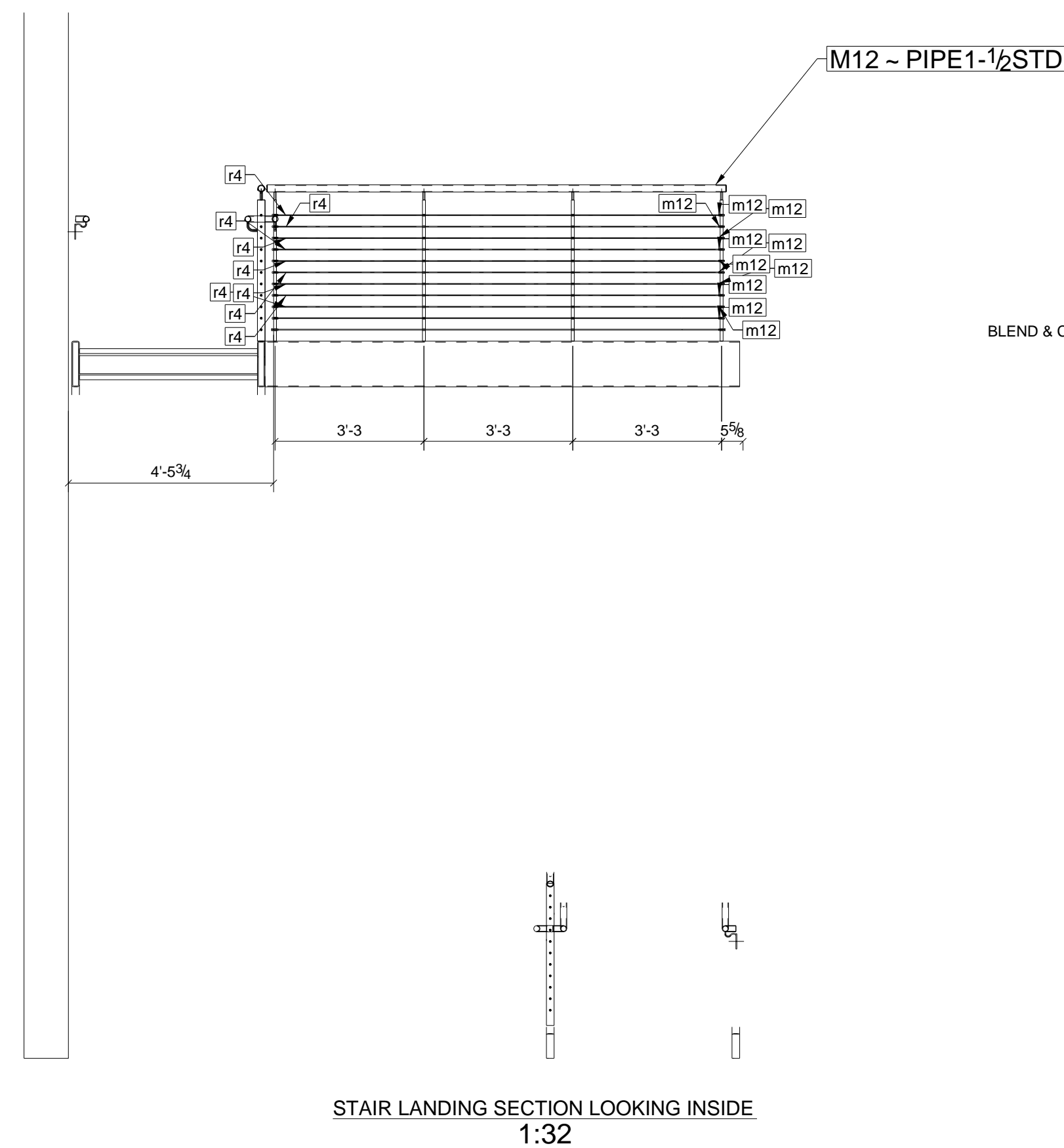
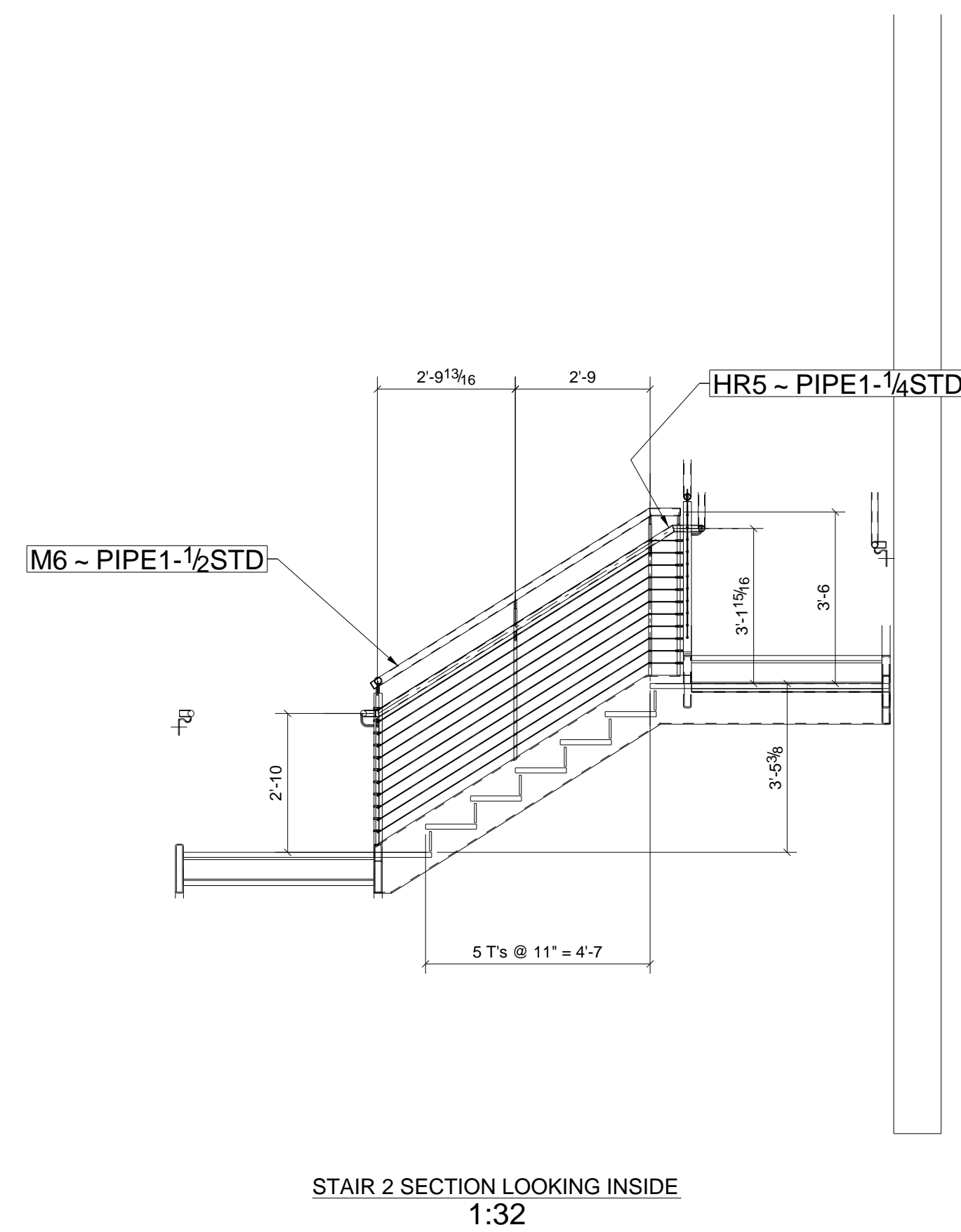
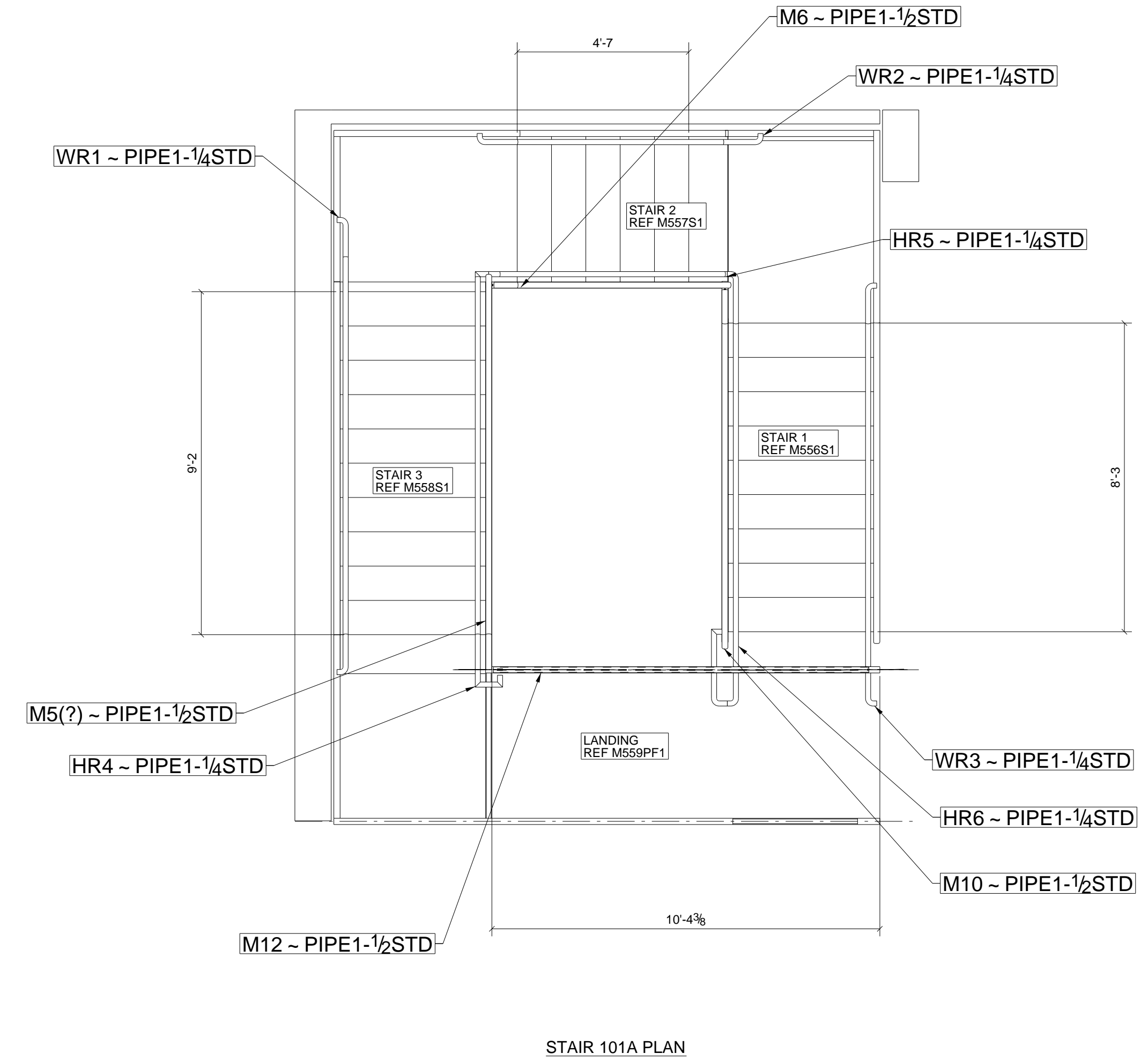
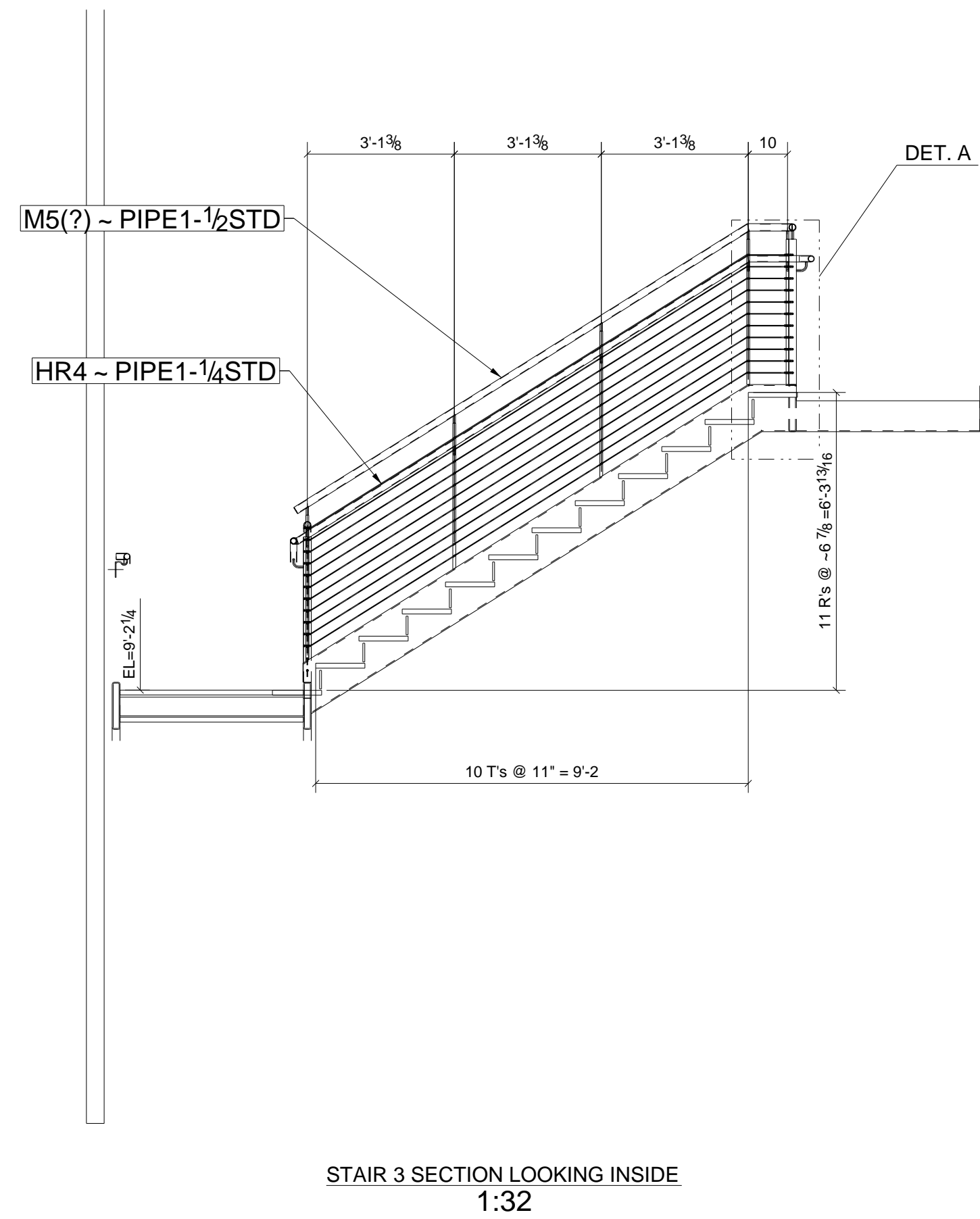
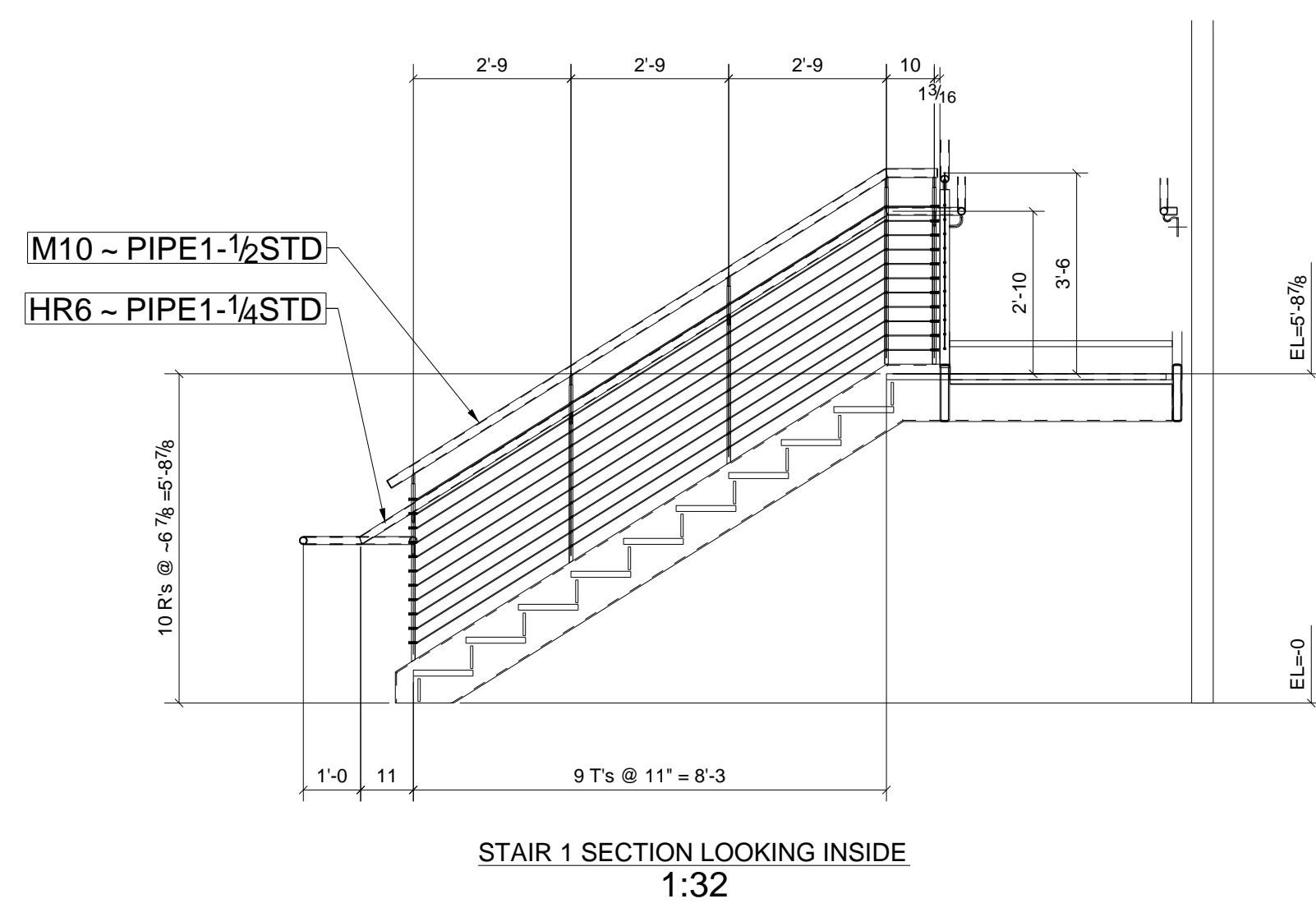
3WR3 - PIPE 1-1/4 STD



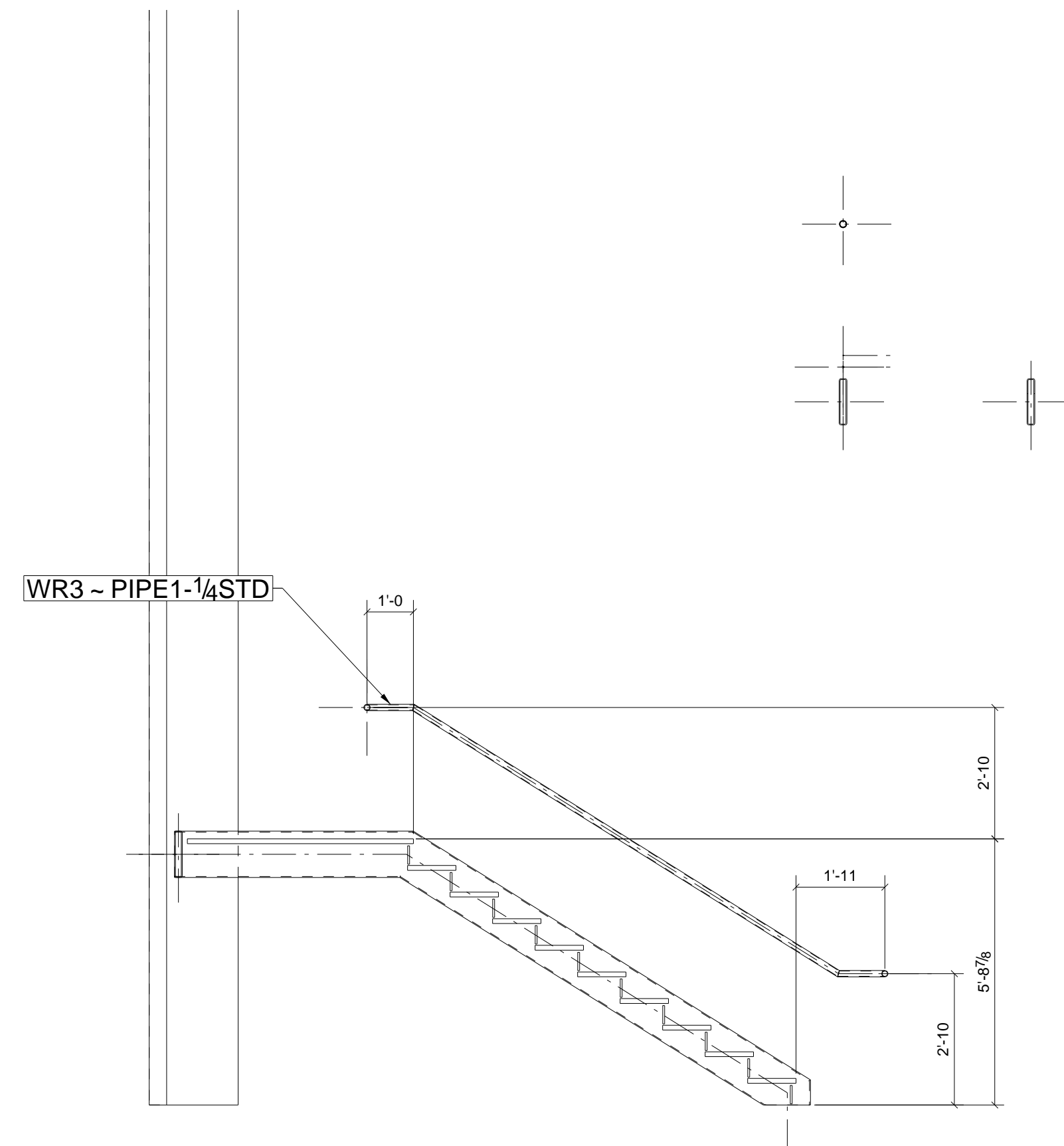
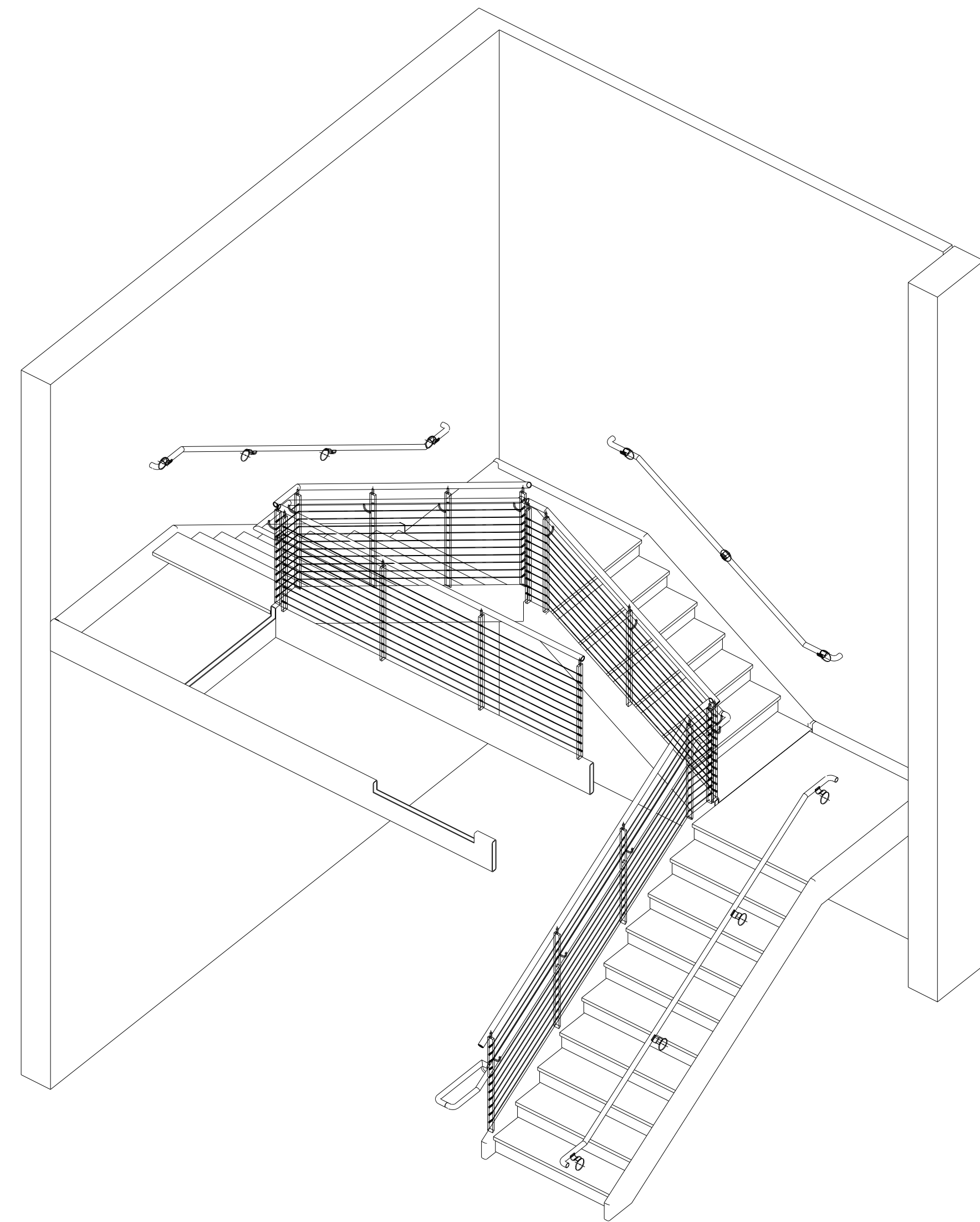
STAIR 3 SECTION LOOKING OUTSIDE

REV.	DESCRIPTION	DATE	DWN	CHK
A	For Approval	07/02/10	TMc	MT
GENERAL NOTES				
MATERIAL: A992 U/N ELECTRODES: E70xx LH REF. DRG.			JOB USE	
HOLES: 13/16 DIA. U/N CONNS: 3/4" Ø A325-N-ST			SHOP	
SURFACE PREP. AND PAINT:			APPROVAL	
PER SPECS 1 S/C STD. PRIMER				
DESCRIPTION: STAIR 101A CABLE RAIL				
PROJ. NAME DIST. WAREHOUSE for ALDI, INC.			DRAWN BY TMc	
LOCATION JEFFERSON, GEORGIA			DATE 07/02/2010	
CONTRACTOR STEEL FAB / C.M. STE ARCH./ENG. AE DESIGN, INC			CHKD. BY TAN	
			DATE	
C.M. STEEL, INC. 8629 OLD DOWD ROAD CHARLOTTE/NC 28219 704-394-6626			JOB No. 25274	
			DRG. No. ME2 REV. A	

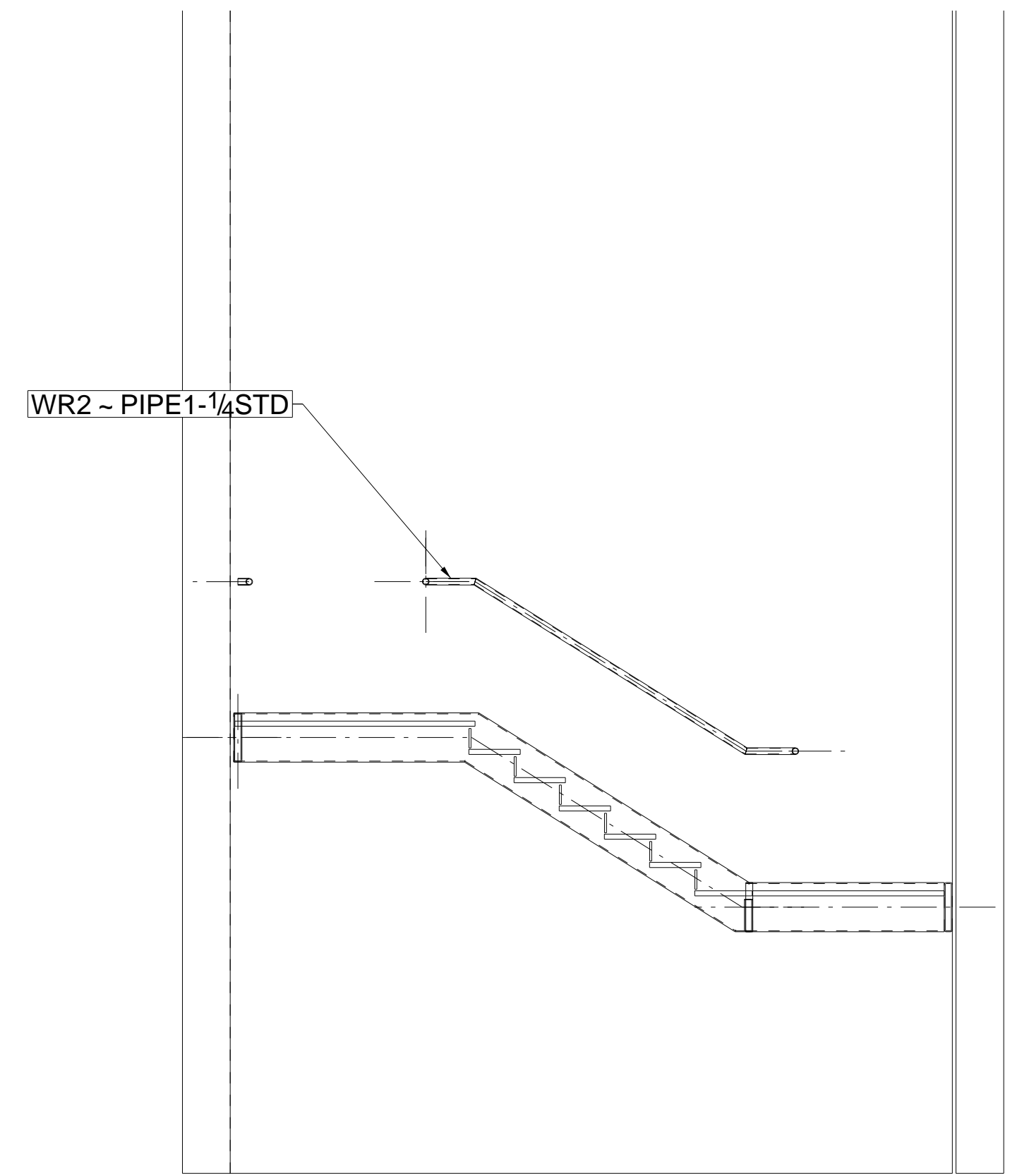




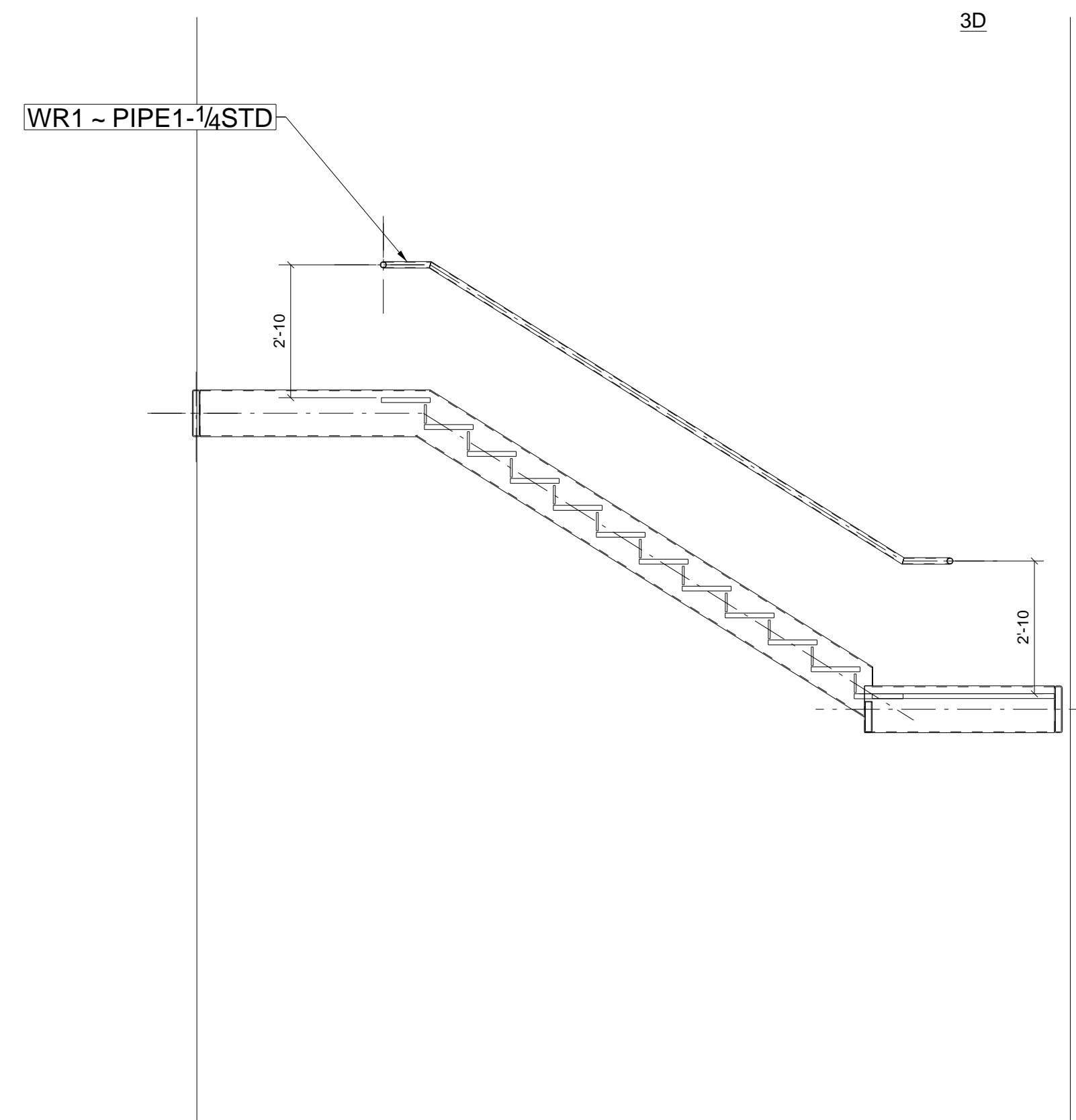
REV.	DESCRIPTION	DATE	DWN	CHK
A	For Approval	07/02/10	TMc	MT
GENERAL NOTES				
MATERIAL: A992 U/N ELECTRODES: E70xx LH REF. DRG.			JOB USE	
HOLES: 13/16 DIA. U/N CONNS: 3/4" Ø A325-N-ST			SHOP	
SURFACE PREP. AND PAINT:			APPROVAL	
PER SPECS 1 S/C STD. PRIMER				
DESCRIPTION: STAIR 101A CABLE RAIL				
PROJ. NAME: DIST. WAREHOUSE for ALDI, INC.			DRAWN BY: TMc	
LOCATION: JEFFERSON, GEORGIA			DATE: 07/02/2010	
CONTRACTOR: STEEL FAB / C.M. STE ARCH/ENG. AE DESIGN, INC			CHKD. BY: TAN	
C.M. STEEL, INC. 8629 OLD DOWD ROAD CHARLOTTE/NC 28219 704-394-6626			DATE: 25274	
			JOB No. 25274	
			DRG. No. ME1	
			REV. A	



STAIR 1 SECTION LOOKING OUTSIDE



STAIR 2 SECTION LOOKING OUTSIDE

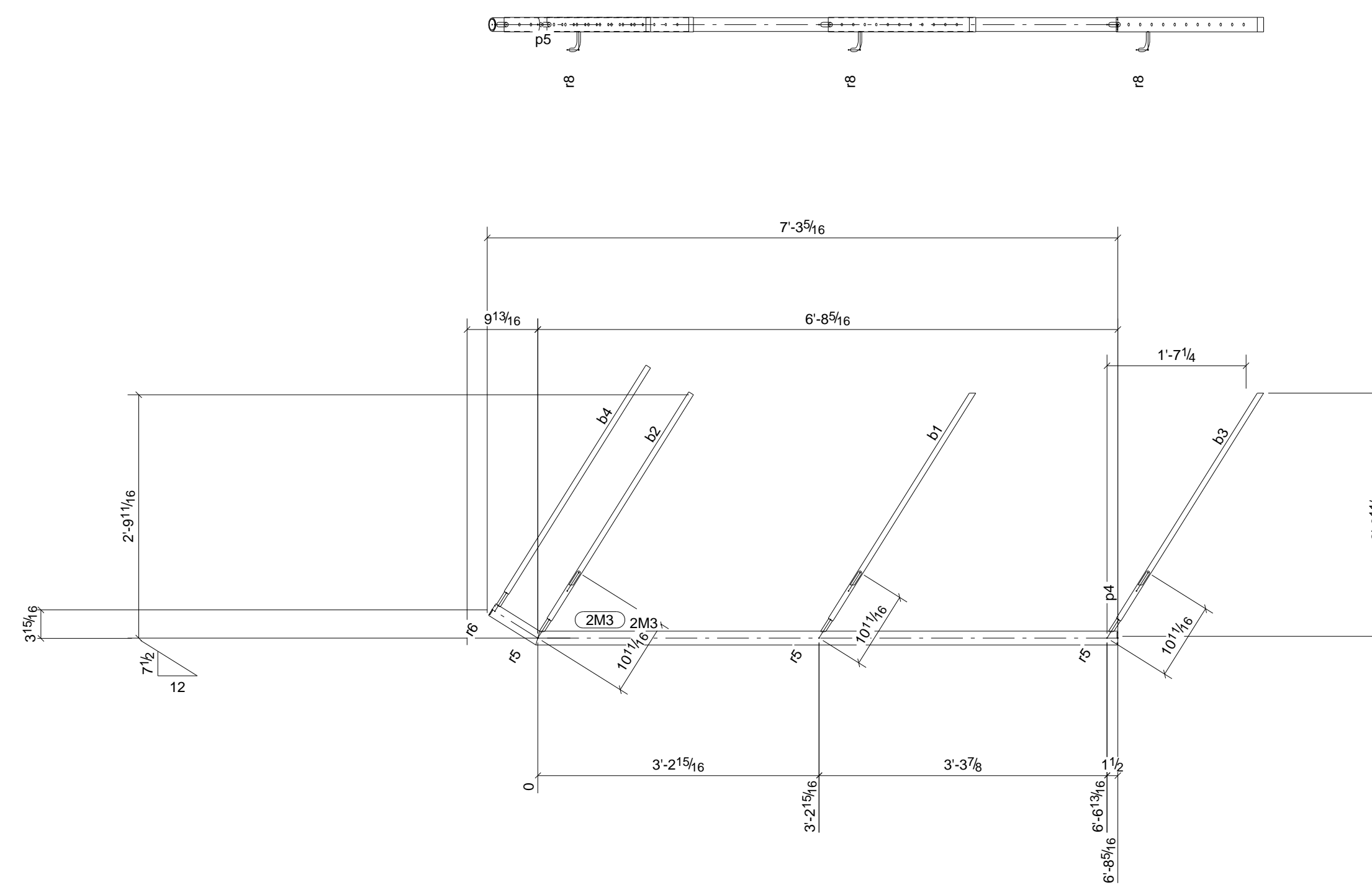


STAIR 3 SECTION LOOKING OUTSIDE

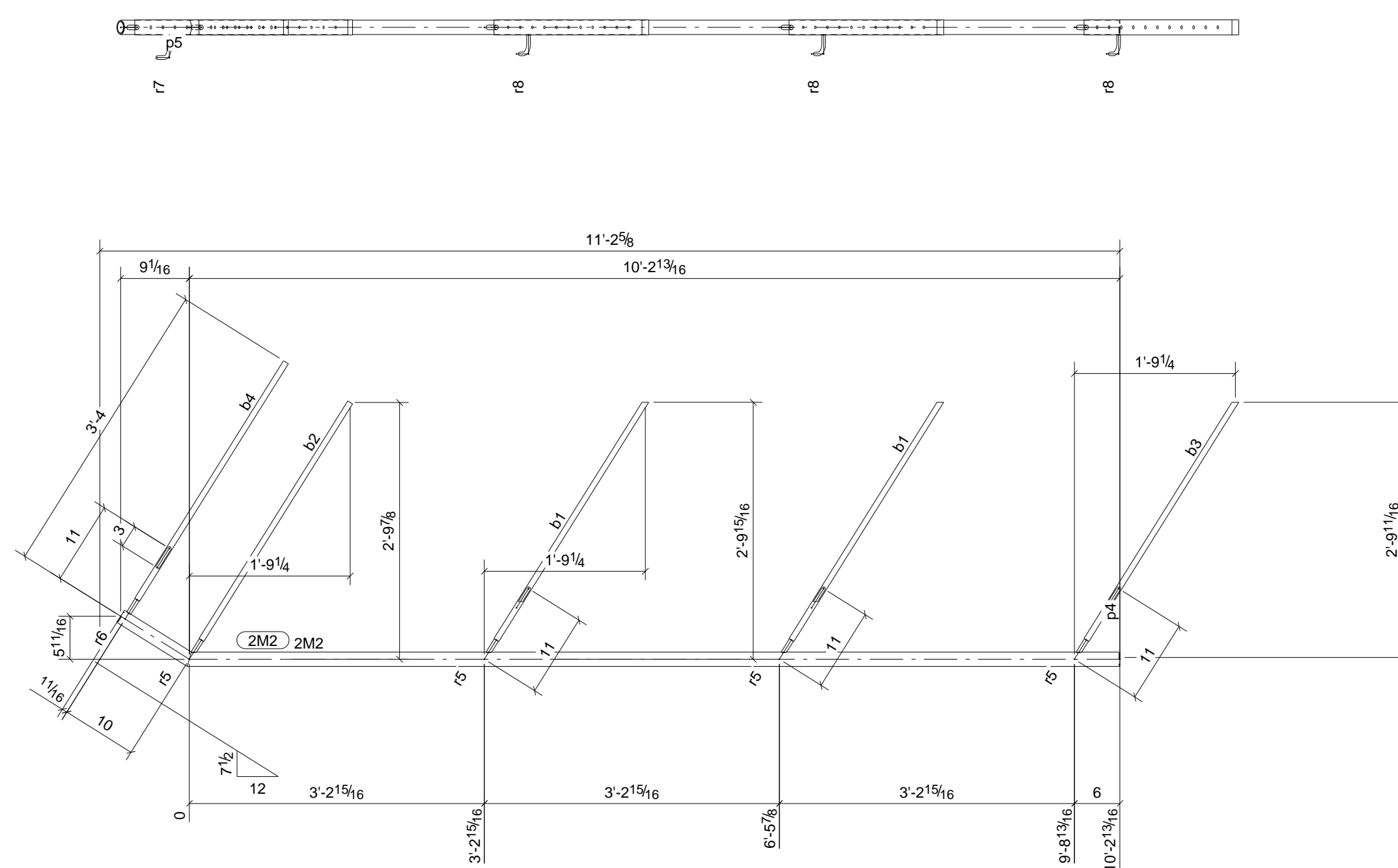
A	For Approval	07/02/10	TMc	MT
REV.	DESCRIPTION	DATE	DWN	CHK
GENERAL NOTES				
MATERIAL: A992	U/N	ELECTRODES: E70xx LH	REF. DRG.	JOB USE
HOLES: 13/16	DIA. UN	CONN'S: 3/4"Ø A325-N-ST		SHOP
SURFACE PREP: AND PAINT:				APPROVAL
PER SPECS 1 S/C STD. PRIMER				
DESCRIPTION: STAIR 101A CABLE RAIL				
PROJ. NAME	DIST. WAREHOUSE for ALDI, INC.			DRAWN BY
LOCATION	JEFFERSON, GEORGIA			TMc
CONTRACTOR STEEL FAB / C.M. STE ARCH/ENG. AE DESIGN, INC				DATE
				07/02/2010
				CHKD. BY
				TAN
				DATE
				JOB No.
				25274
				REV.
				A

C.M. STEEL, INC.
8629 OLD DOWD ROAD
CHARLOTTE/NC 28219
704-394-6626





1 - RAIL - 2M3

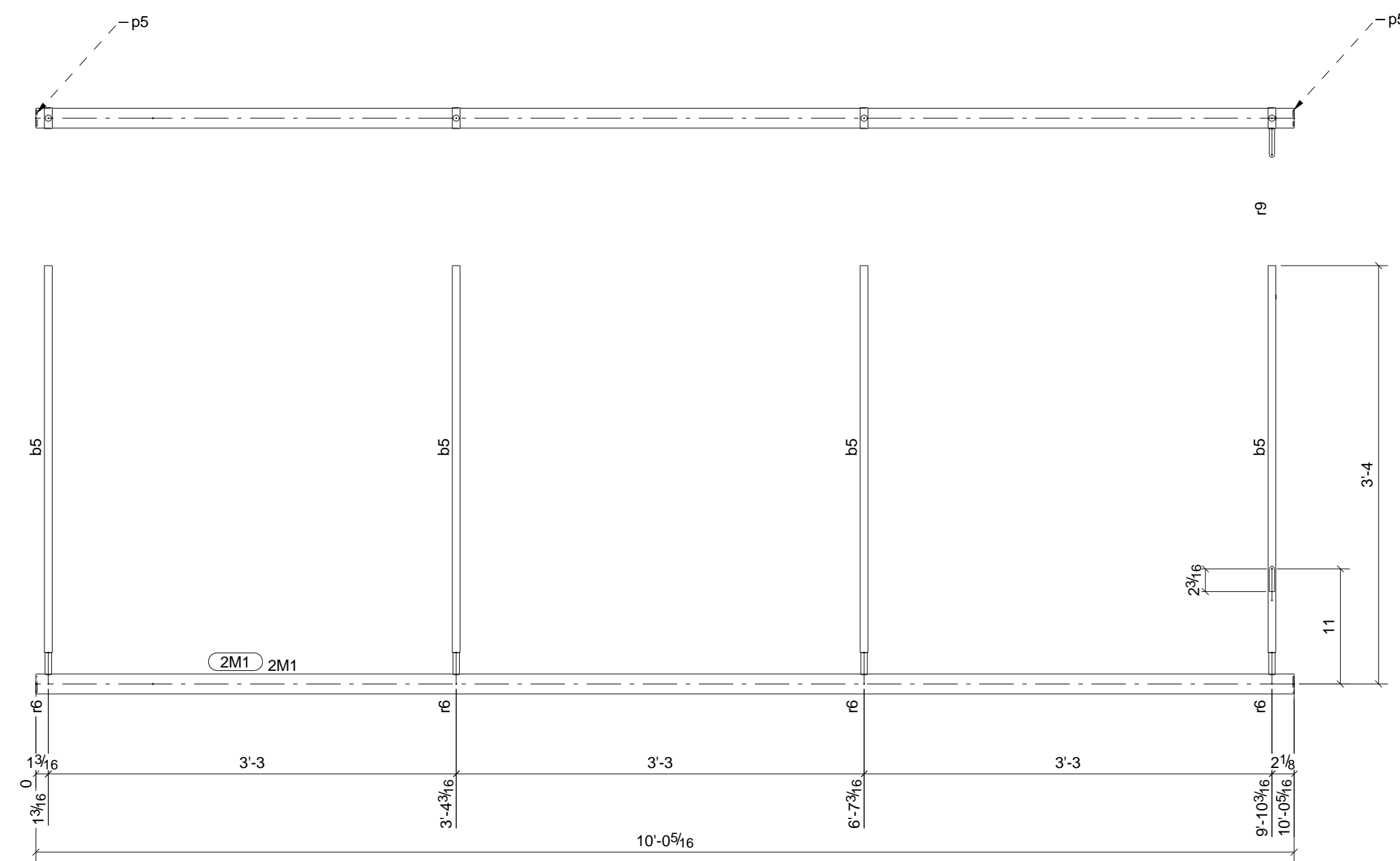


1 - RAIL - 2M2

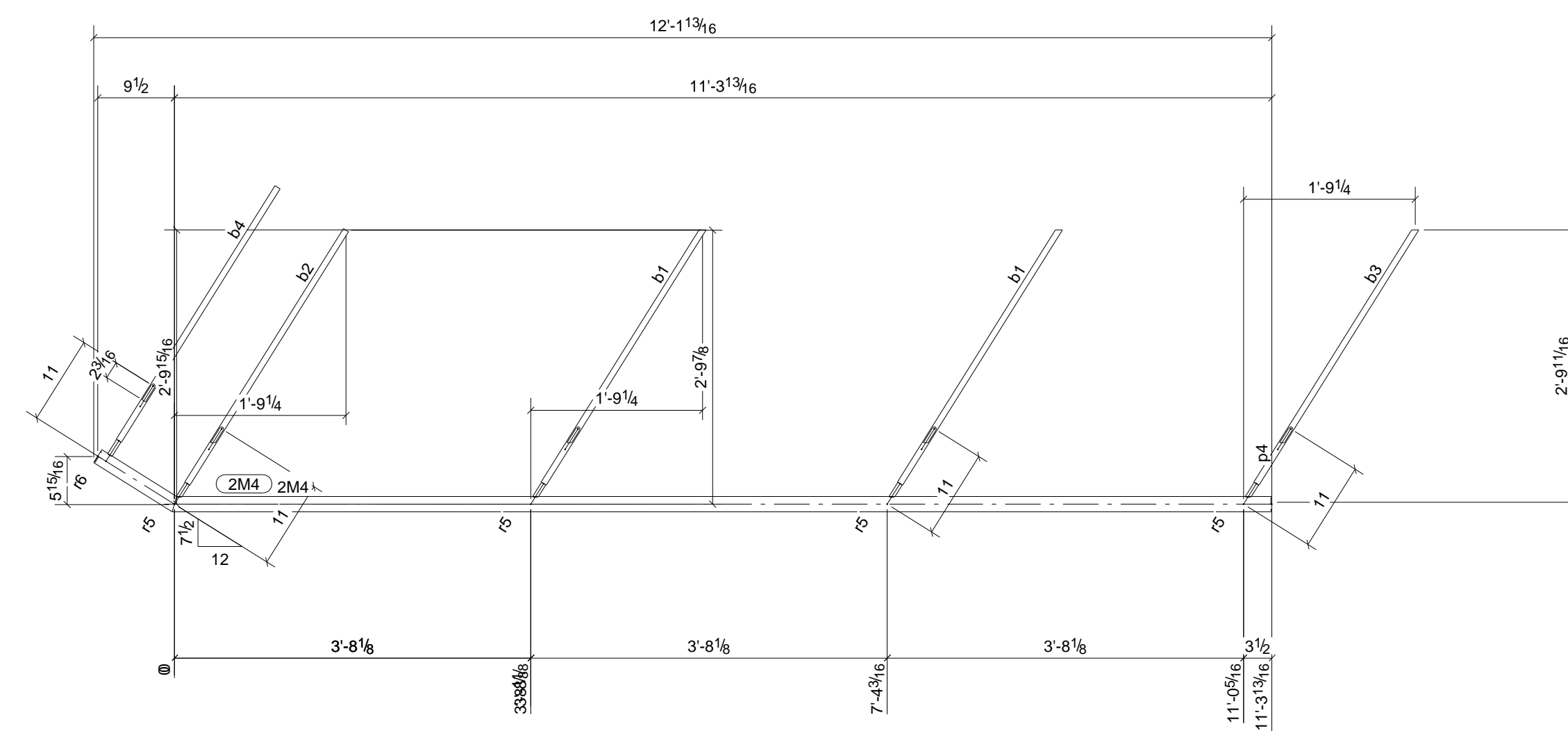
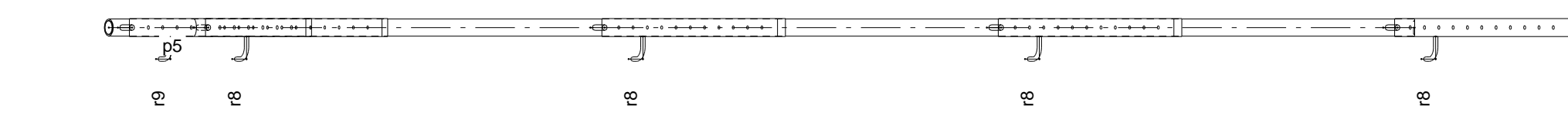
BILL OF MATERIAL

SHIP MARK	NO PCS	DESCRIPTION	LENGTH	PIECE MARK	REMARKS
11	1R1	11	CABLE3/16"	10'-6 9/16"	SQ-1/BEV-1 A304
		22	INVISIWARE R-6-12	0'-1 9/16"	m11 A304
1	1R2	1	CABLE3/16"	7'-1 9/16"	SQ-1/BEV-1 A304
		12	INVISIWARE R-6-12	0'-1 9/16"	m12 A304
		10	CABLE3/16"	7'-1 9/16"	r3 A304
1	2M2	1	PIPE1-1/2STD	11'-0 15/16"	SQ-2 A304
		2	FL3/4"X2"	3'-1 1/4"	b1 A36
		1	FL3/4"X2"	3'-1"	b2 A36
		1	FL3/4"X2"	3'-1 1/4"	b3 A36
		1	FL3/4"X2"	3'-1"	b4 A36
		1	FL1/8"X1 1/2"	0'-1 5/8"	p4 A304
		1	FL1/8"X1 1/2"	0'-1 1/2"	p5 A304
		4	RB5/8"	0'-2 1/8"	r5 A304
		1	RB5/8"	0'-2 1/8"	r6 A304
		1	RB1/2"	0'-5 1/16"	r7 A304
		3	RB1/2"	0'-3 11/16"	r8 A304
1	2M3	1	PIPE1-1/2STD	7'-3 3/16"	SQ-2 A304
		1	FL3/4"X2"	3'-1 1/4"	b1 A36
		1	FL3/4"X2"	3'-1"	b2 A36
		1	FL3/4"X2"	3'-1 1/4"	b3 A36
		1	FL3/4"X2"	3'-1"	b4 A36
		1	FL1/8"X1 1/2"	0'-1 5/8"	p4 A304
		1	FL1/8"X1 1/2"	0'-1 1/2"	p5 A304
		3	RB5/8"	0'-2 1/8"	r5 A304
		1	RB5/8"	0'-2 1/8"	r6 A304
		3	RB1/2"	0'-3 11/16"	r8 A304
78	HR1	78	ROD9/16"	0'-0 3/16"	SQ-2 A304

A	For Approval	07/02/10	TMc	MT
REV.	DESCRIPTION	DATE	DWN	CHK
GENERAL NOTES				
MATERIAL: A992 UN		ELECTRODES: E70xx LH		REF. DRG.
HOLES: 13/16 DIA. UN		CONNS: 3/4"Ø A325-N-ST		
SURFACE PREP. AND PAINT:		JOB USE		
PER SPECS		SHOP		
1 S/C STD. PRIMER		APPROVAL		
DESCRIPTION: CABLE RAIL DETAILS				
PROJ. NAME	DIST. WAREHOUSE for ALDI, INC.		DRAWN BY	TMc
LOCATION	JEFFERSON, GEORGIA		DATE	07/02/2010
CONTRACTOR STEEL FAB / C.M. STE ARCH/ENG. AE DESIGN, INC		CHKD. BY	TAN	
		DATE		
C.M. STEEL, INC. 8629 OLD DOWD ROAD CHARLOTTE/NC 28219 704-394-6626		JOB No.	25274	
		DRG. No.	M1	
		REV.	A	



1 - RAIL - 2M1

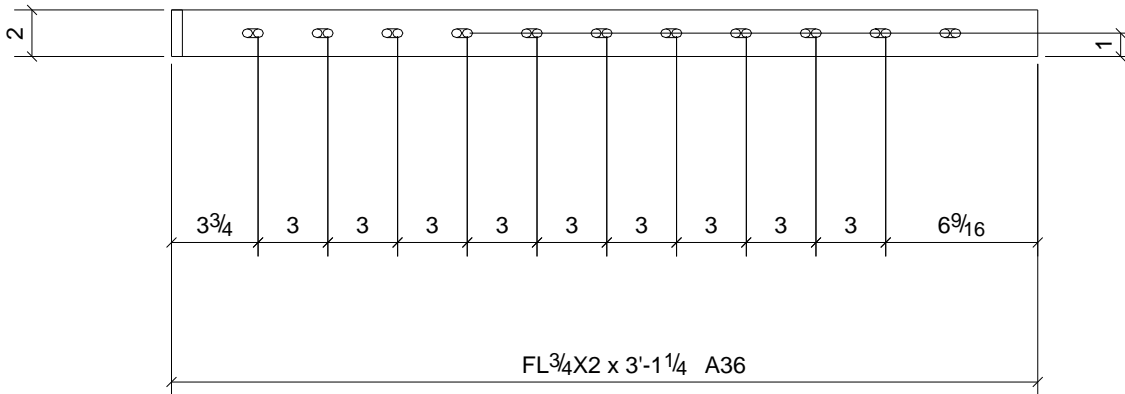
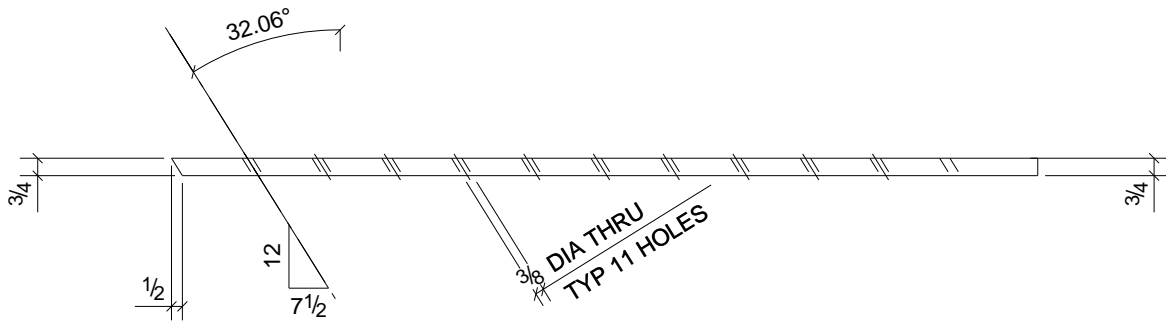


1 - RAIL - 2M4

BILL OF MATERIAL

SHIP MARK	NO PCS	DESCRIPTION	LENGTH	PIECE MARK	REMARKS
1	2M1	1 PIPE 1-1/2 STD	10'-0 5/16"		SQ-2 A304
		4 FL 3/4" X 2"	3'-1"	b5	A36
		2 FL 1/8" X 1 1/2"	0'-1 1/2"	p5	A304
		4 RB 5/8"	0'-2 1/8"	r6	A304
		1 RB 1/2"	0'-3 11/16"	r9	A304
1	2M4	1 PIPE 1-1/2 STD	12'-2 7/16"		SQ-2 A304
		2 FL 3/4" X 2"	3'-1 1/4"	b1	A36
		1 FL 3/4" X 2"	3'-1"	b2	A36
		1 FL 3/4" X 2"	3'-1 1/4"	b3	A36
		1 FL 3/4" X 2"	3'-1"	b4	A36
		1 FL 1/8" X 1 1/2"	0'-1 5/8"	p4	A304
		1 FL 1/8" X 1 1/2"	0'-1 1/2"	p5	A304
		4 RB 5/8"	0'-2 1/8"	r5	A304
		1 RB 5/8"	0'-2 1/8"	r6	A304
		4 RB 1/2"	0'-3 11/16"	r8	A304
		1 RB 1/2"	0'-3 11/16"	r9	A304
1	2R1	1 CABLE 3/16"	9'-9 3/8"		SQ-1 BEV-1 A304
		2 INVISIWARE R-6-12	0'-1 9/16"	m12	A304
1	2R2	1 CABLE 3/16"	11'-10 1/16"		SQ-1 BEV-1 A304
		12 INVISIWARE R-6-12	0'-1 9/16"	m11	A304
		10 CABLE 3/16"	11'-10 1/16"	r2	A304
78	HR1	78 ROD 9/16"	0'-0 3/16"		SQ-2 A304

REV. A	For Approval	07/02/10	TMc	MT
DESCRIPTION	DATE	DWN	CHK	
GENERAL NOTES				
MATERIAL: A992	UN	ELECTRODES: E70xx LH	REF. DRG.	JOB USE
HOLES: 13/16 DIA. UN	CONN'S:	3/4" Ø A325-N-ST		SHOP
SURFACE PREP. AND PAINT:				APPROVAL
PER SPECS				
1 S/C STD. PRIMER				
DESCRIPTION: CABLE RAIL DETAILS				
PROJ. NAME	DIST. WAREHOUSE for ALDI, INC.		DRAWN BY	TMc
LOCATION	JEFFERSON, GEORGIA		DATE	07/02/2010
CONTRACTOR STEEL FAB / C.M. STE ARCH/ENG. AE DESIGN, INC			CHKD. BY	TAN
C.M. STEEL, INC. 8629 OLD DOWD ROAD CHARLOTTE/NC 28219 704-394-6626			JOB No.	25274
			DRG. No.	M2
			REV.	A



2	2M2
1	2M3
2	2M4
Qty.	In Assembly

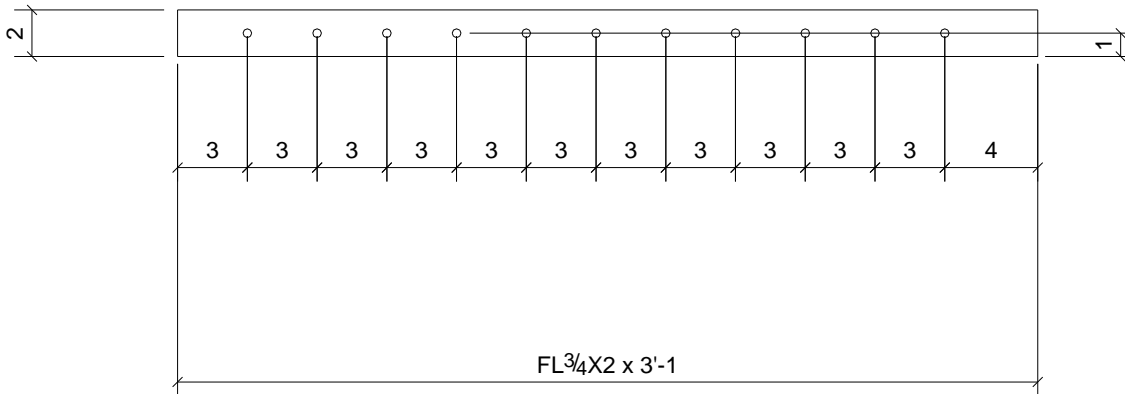
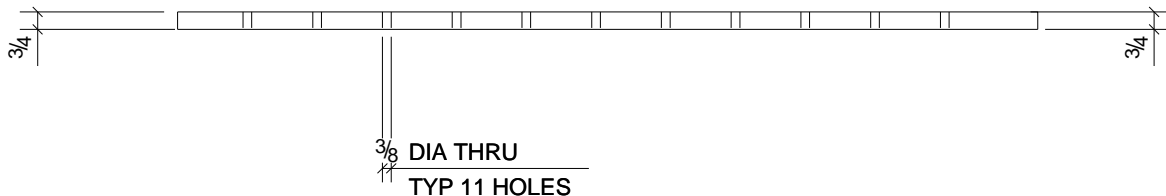
MARK	QTY.	SIZE	LENGTH	COMMENTS
b1	5	FL 3/4 X 2"	3'-1 1/4"	

DESCRIPTION: BAR

PROJECT NAME DIST. WAREHOUSE for ALDI, INC.
 LOCATION JEFFERSON, GEORGIA

CUSTOMER: STEEL FAB / C.M. STEEL

C.M. STEEL, INC. 8629 OLD DOWD ROAD CHARLOTTE/NC 28219 704-394-6626	DRAWN BY TMc	DATE 07/01/2010
	CHKD. BY TAN	DATE
	JOB No. 25274	DRG. No. b1



1	2M2
1	2M3
1	2M4
Qty.	In Assembly

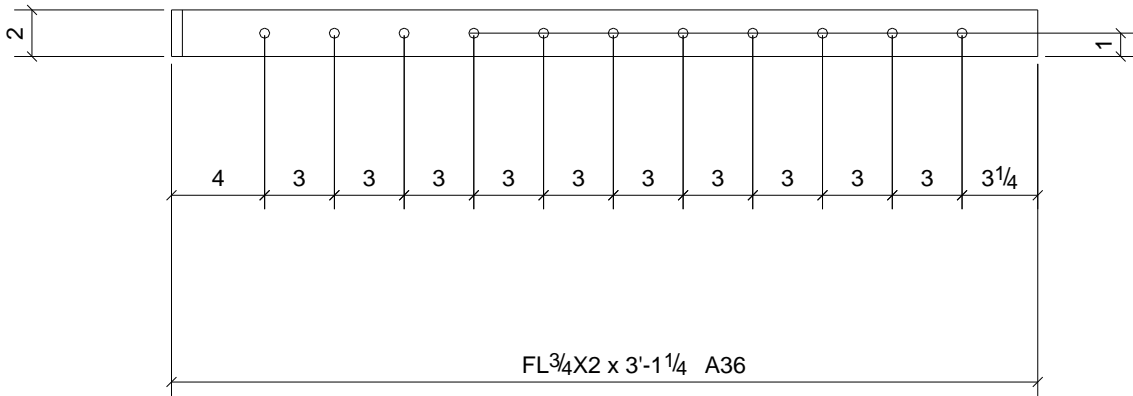
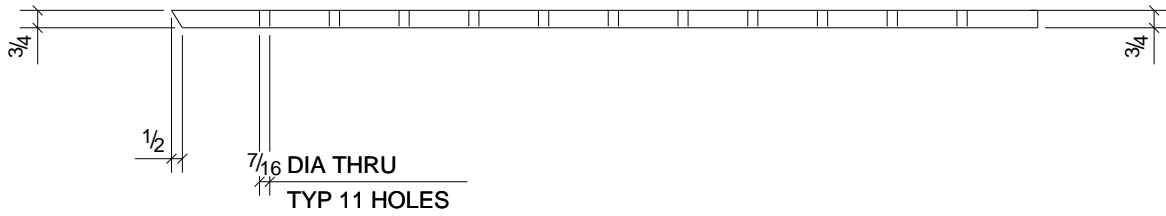
MARK	QTY.	SIZE	LENGTH	COMMENTS
b2	3	FL3/4"x2"	3'-1"	

DESCRIPTION: BAR

PROJECT NAME DIST. WAREHOUSE for ALDI, INC.
 LOCATION JEFFERSON, GEORGIA

CUSTOMER: STEEL FAB / C.M. STEEL

C.M. STEEL, INC. 8629 OLD DOWD ROAD CHARLOTTE/NC 28219 704-394-6626	DRAWN BY TMc	DATE 07/01/2010
	CHKD. BY TAN	DATE
	JOB No. 25274	DRG. No. b2



1	2M2
1	2M3
1	2M4
Qty.	In Assembly

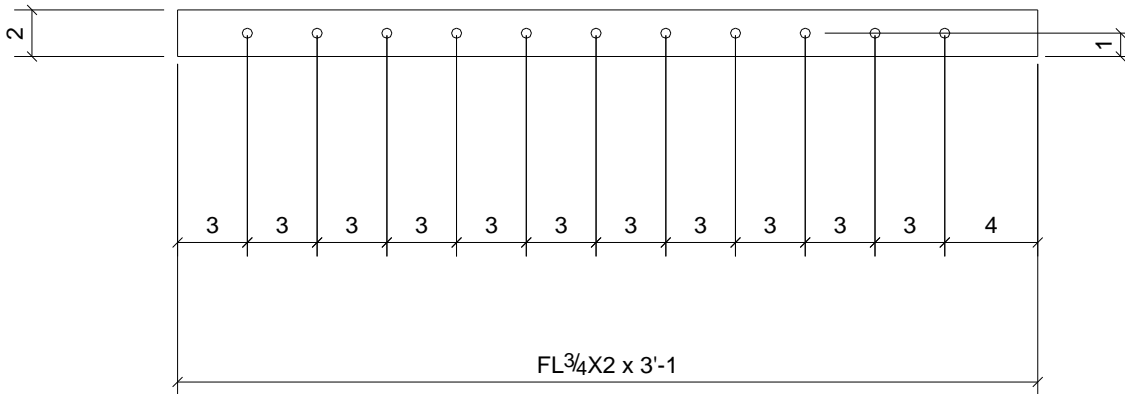
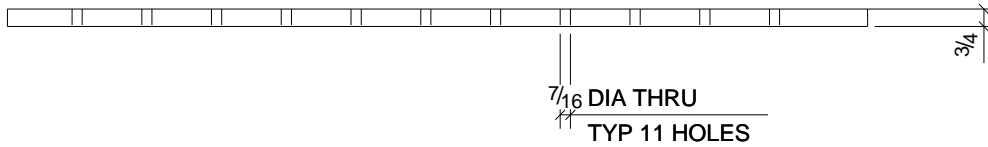
MARK	QTY.	SIZE	LENGTH	COMMENTS
b3	3	FL3/4"x2"	3'-1 1/4"	

DESCRIPTION: BAR

PROJECT NAME DIST. WAREHOUSE for ALDI, INC.
 LOCATION JEFFERSON, GEORGIA

CUSTOMER: STEEL FAB / C.M. STEEL

C.M. STEEL, INC. 8629 OLD DOWD ROAD CHARLOTTE/NC 28219 704-394-6626	DRAWN BY TMc	DATE 07/01/2010
	CHKD. BY TAN	DATE
	JOB No. 25274	DRG. No. b3



1	2M2
1	2M3
1	2M4
Qty.	In Assembly

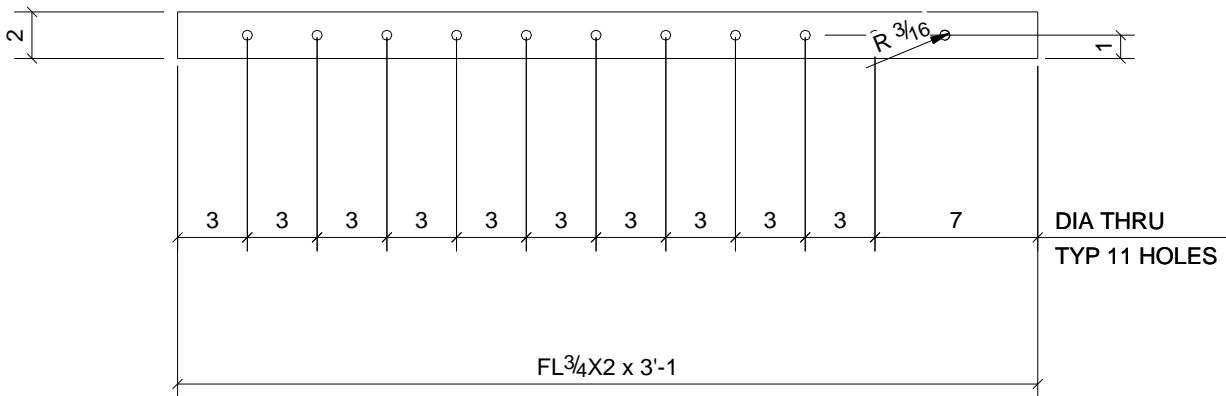
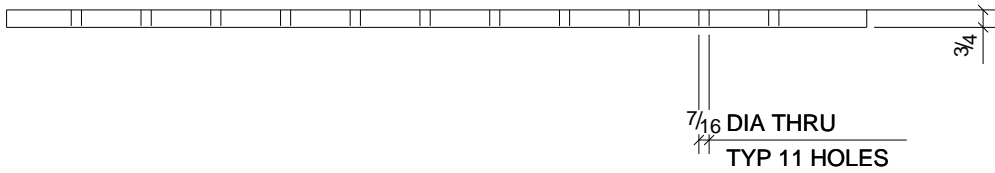
b4	3	FL 3/4 X 2"	3'-1"	
MARK	QTY.	SIZE	LENGTH	COMMENTS

DESCRIPTION: BAR

PROJECT NAME DIST. WAREHOUSE for ALDI, INC.
LOCATION JEFFERSON, GEORGIA

CUSTOMER: STEEL FAB / C.M. STEEL

<p>C.M. STEEL, INC. 8629 OLD DOWD ROAD CHARLOTTE/NC 28219 704-394-6626</p>	DRAWN BY TMc	DATE 07/01/2010
	CHKD. BY TAN	DATE
	JOB No. 25274	DRG. No. b4



4	2M1
Qty.	In Assembly

b5	4	FL 3/4 X 2"	3'-1"	
MARK	QTY.	SIZE	LENGTH	COMMENTS

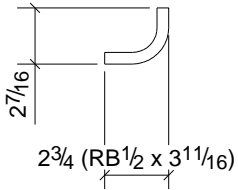
DESCRIPTION: BAR

PROJECT NAME DIST. WAREHOUSE for ALDI, INC.
LOCATION JEFFERSON, GEORGIA

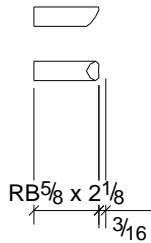
CUSTOMER: STEEL FAB / C.M. STEEL

C.M. STEEL, INC.
8629 OLD DOWD ROAD
CHARLOTTE/NC 28219
704-394-6626

DRAWN BY TMc	DATE 07/01/2010
CHKD. BY TAN	DATE
JOB No. 25274	DRG. No. b5



ONE - ROD - R4



4	2M2
3	2M3
4	2M4
Qty.	In Assembly

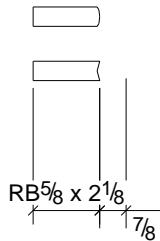
r5	11	RB5/8"	0'-2 1/8"	
MARK	QTY.	SIZE	LENGTH	COMMENTS

DESCRIPTION: BAR

PROJECT NAME DIST. WAREHOUSE for ALDI, INC.
LOCATION JEFFERSON, GEORGIA

CUSTOMER: STEEL FAB / C.M. STEEL

<p>C.M. STEEL, INC. 8629 OLD DOWD ROAD CHARLOTTE/NC 28219 704-394-6626</p>	DRAWN BY TMc	DATE 07/02/2010
	CHKD. BY TAN	DATE
	JOB No. 25274	DRG. No. r5



4	2M1
1	2M2
1	2M3
1	2M4
Qty.	In Assembly

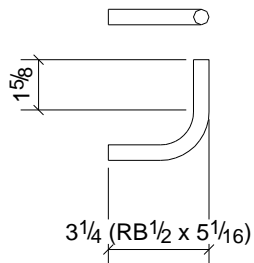
r6	7	RB 5/8"	0'-2 1/8"	
MARK	QTY.	SIZE	LENGTH	COMMENTS

DESCRIPTION: BAR

PROJECT NAME DIST. WAREHOUSE for ALDI, INC.
LOCATION JEFFERSON, GEORGIA

CUSTOMER: STEEL FAB / C.M. STEEL

<p>C.M. STEEL, INC. 8629 OLD DOWD ROAD CHARLOTTE/NC 28219 704-394-6626</p>	DRAWN BY TMc	DATE 07/02/2010
	CHKD. BY TAN	DATE
	JOB No. 25274	DRG. No. r6



1	2M2
Qty.	In Assembly

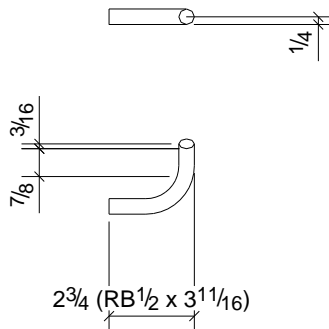
r7	1	RB1/2"	0'-5 1/16"	
MARK	QTY.	SIZE	LENGTH	COMMENTS

DESCRIPTION: BAR

PROJECT NAME DIST. WAREHOUSE for ALDI, INC.
 LOCATION JEFFERSON, GEORGIA

CUSTOMER: STEEL FAB / C.M. STEEL

<p>C.M. STEEL, INC. 8629 OLD DOWD ROAD CHARLOTTE/NC 28219 704-394-6626</p>	DRAWN BY TMc	DATE 07/02/2010
	CHKD. BY TAN	DATE
	JOB No. 25274	DRG. No. r7



3	2M2
3	2M3
4	2M4
Qty.	In Assembly

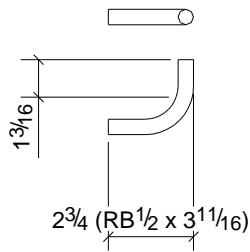
r8	10	RB1/2"	0'-3 11/16"	
MARK	QTY.	SIZE	LENGTH	COMMENTS

DESCRIPTION: BAR

PROJECT NAME DIST. WAREHOUSE for ALDI, INC.
 LOCATION JEFFERSON, GEORGIA

CUSTOMER: STEEL FAB / C.M. STEEL

<p>C.M. STEEL, INC. 8629 OLD DOWD ROAD CHARLOTTE/NC 28219 704-394-6626</p>	DRAWN BY TMc	DATE 07/02/2010
	CHKD. BY TAN	DATE
	JOB No. 25274	DRG. No. r8



1	2M1
1	2M4
Qty.	In Assembly

r9	2	RB1/2"	0'-3 11/16"	
MARK	QTY.	SIZE	LENGTH	COMMENTS

DESCRIPTION: BAR

PROJECT NAME DIST. WAREHOUSE for ALDI, INC.
 LOCATION JEFFERSON, GEORGIA

CUSTOMER: STEEL FAB / C.M. STEEL

<p>C.M. STEEL, INC. 8629 OLD DOWD ROAD CHARLOTTE/NC 28219 704-394-6626</p>	DRAWN BY TMc	DATE 07/02/2010
	CHKD. BY TAN	DATE
	JOB No. 25274	DRG. No. r9