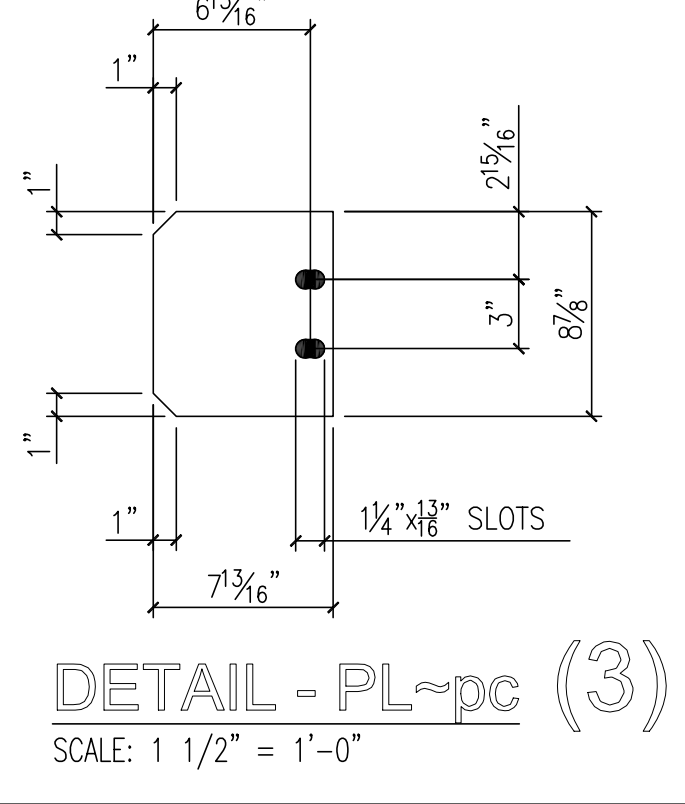
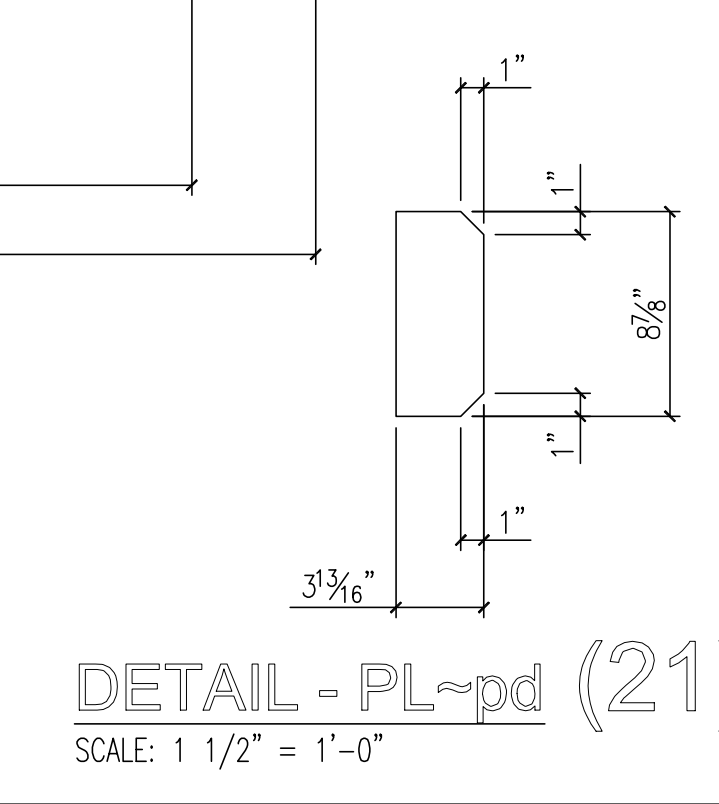
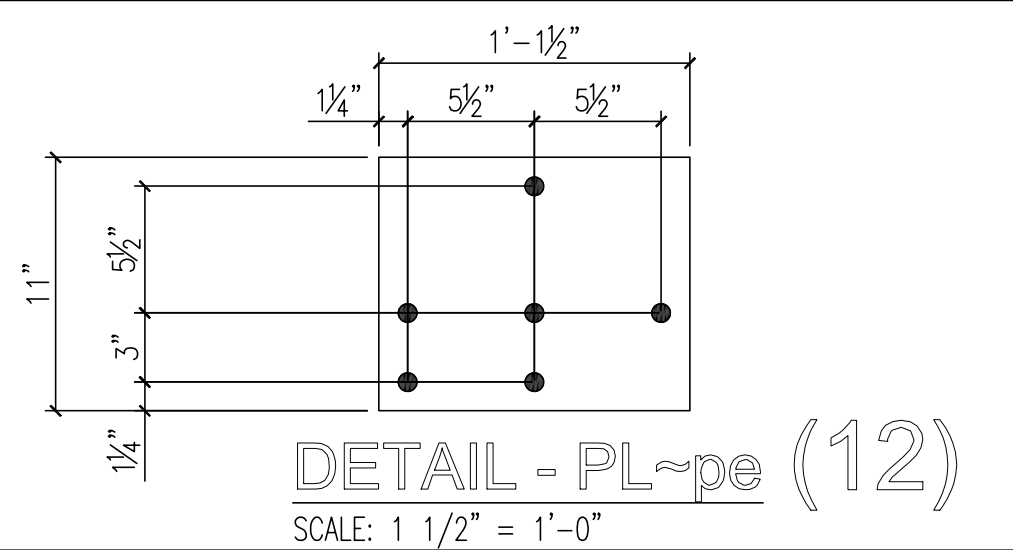
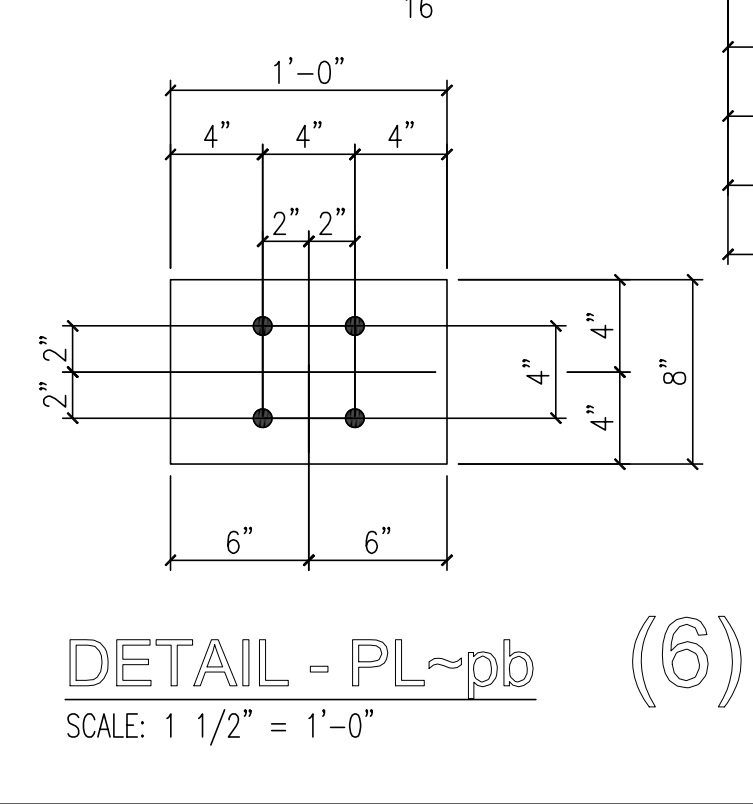
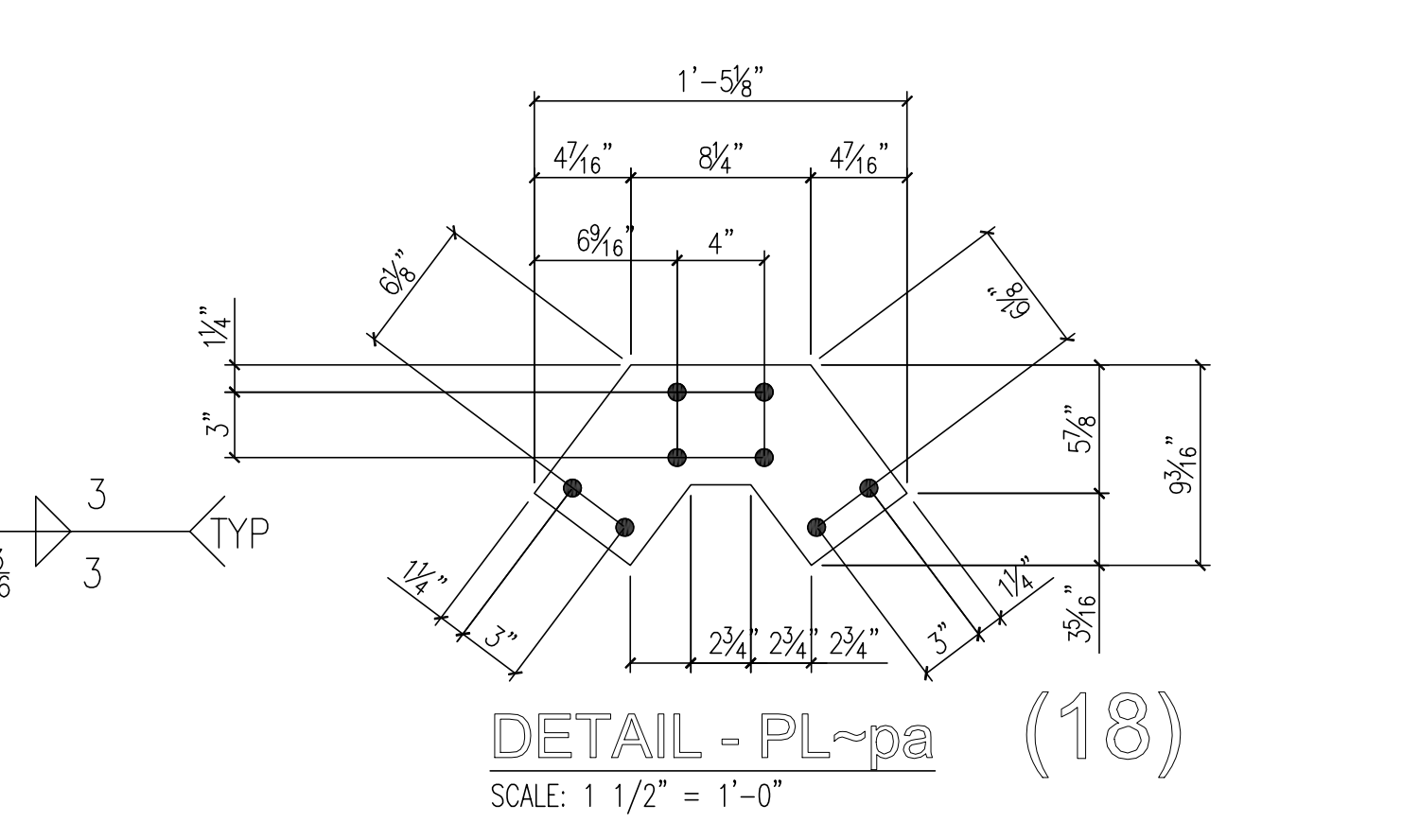


BILL OF MATERIAL						
PC MARK	QU.	MATERIAL	LENGTH		REMARKS	WEIGHT
			FT	IN		
1-R1	3	RAFTER	-	-		-
maR	3	C 10x15.3	13	3 1/4	B.C.2 E.	609
maL	3	C 10x15.3	13	3 1/4	B.C.2 E.	609
mb	3	C 10x15.3	9	2 11/16	B.C.1 E.	423
mc	3	W 10x33	15	2 1/2		1506
pa	3	PL 3/8x9 3/16	1	5 1/8	SHAPED	50
pb	3	PL 3/8x8	1	0		31
pc	3	PL 3/8x7 13/16	0	8 7/8		22
pd	3	PL 3/8x3 13/16	0	8 7/8		11
pe	6	PL 3/8x11	1	1 1/2		95
pf	6	PL 3/8x10	12	8 1/2	BENT	971
pg	6	PL 3/8x8	10	7 1/2		649
ph	6	PL 3/8x8	8	6 7/8		524
aa	6	L 4x3-1/2x3/8	0	5 1/2		25
TOT. WT.						5525

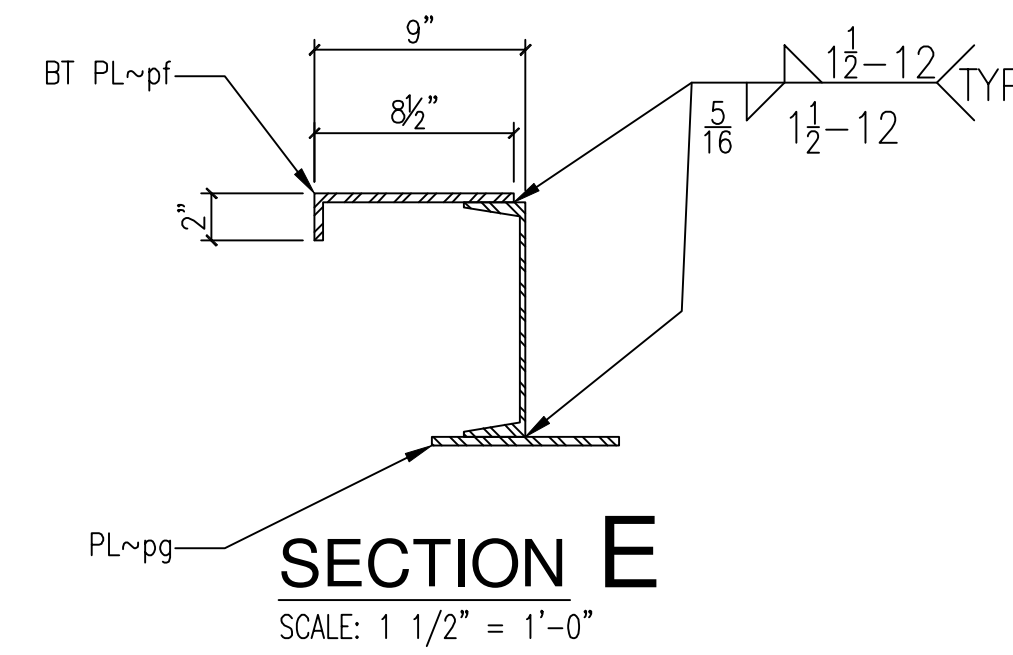
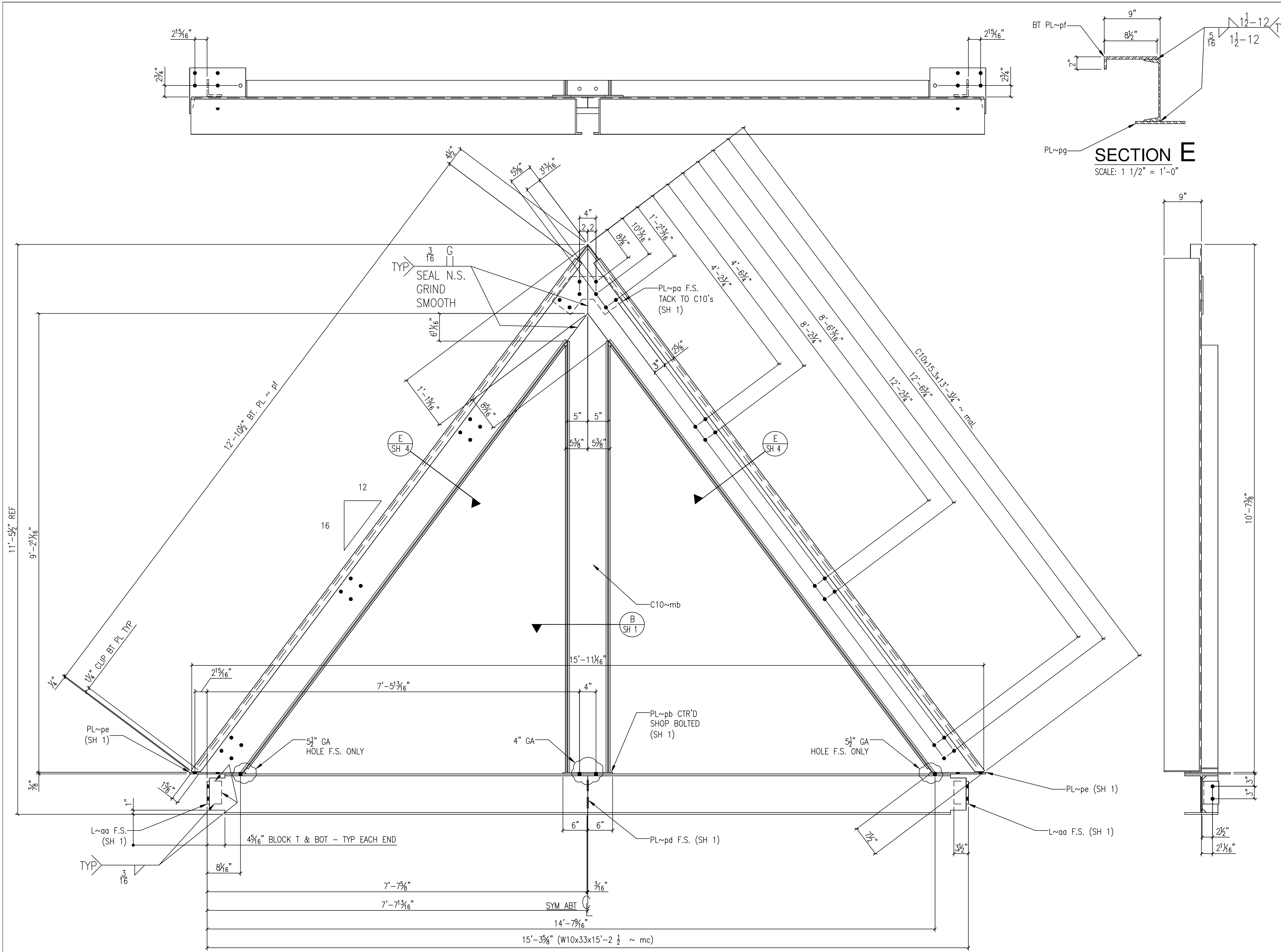


NO.	BY	DATE	REVISION
A	Tmc	7-31-02	CHECKER CHANGES, RESUB TO G.C.

E DWG	E1	PROJECT DEER LAKES PARK - RESTROOM UPGRADE
MATERIAL	A36 UN	LOCATION VARIOUS
ELECTRODES	E70XX (LH)	OWNER PA DEPT. OF PUBLIC WORKS
HOLES	13/16\"/>	
BOLTS	3/4\"/>	
CLEANING	PER SPECS	DRN BY T. McCONNELL CKD BY MT SCALE NOTED
SHOP PAINT	SEE SH E1 NOTES	DRN DATE 7-24-02 CKD DATE 7-24-02 DWG

HIGHLAND STEEL, INC. 1037 DELAUM ROAD ST. MARYS, PENNSYLVANIA 15857 PH: 814-834-9456 FAX: 814-834-6456	D SIZE REVISION A	ARM-001-2
		JOB NO ARM-001
		SHEET 1 OF 14

N:\ubba\ARM\001\ARM\001-2_A.dwg, 07/31/2002 02:46:35 PM

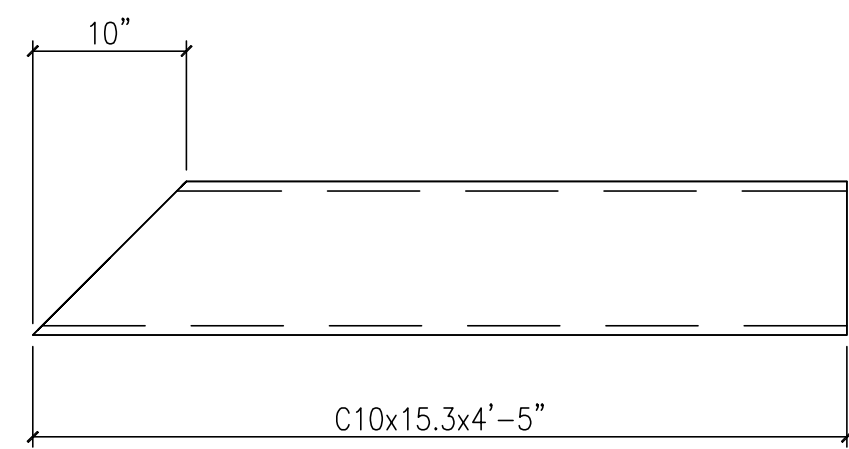


BILL OF MATERIAL

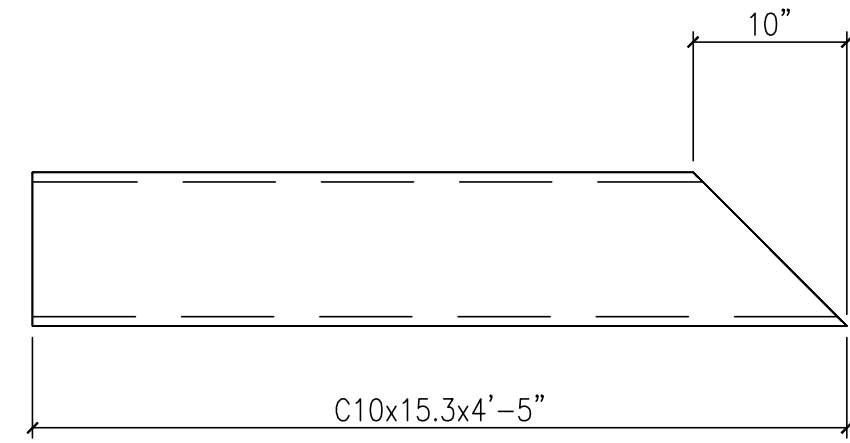
PC MARK	QU.	MATERIAL	LENGTH		REMARKS	WEIGHT
			FT	IN		
4-R4	3	RAFTER	-	-		-
maR	3	C 10x15.3	13	3 1/4	B.C.2 E.	609
maL	3	C 10x15.3	13	3 1/4	B.C.2 E.	609
mb	3	C 10x15.3	9	2 11/16	B.C.1 E.	423
mc	3	W 10x33	15	2 1/2		1506
pa	3	PL 3/8x9 3/16	1	5 1/8	SHAPED	50
pb	3	PL 3/8x8	1	0		31
pd	3	PL 3/8x3 13/16	0	8 7/8		11
pe	6	PL 3/8x11	1	1 1/2		95
pf	6	PL 3/8x10	12	10 1/2	BENT	977
pg	6	PL 3/8x8	10	7 1/2		649
ph	6	PL 3/8x8	8	6 7/8		524
aa	6	L 4x3-1/2x3/8	0	5 1/2		25
TOT. WT.						5630

3 ~ RAFTERS ~ 4-R4

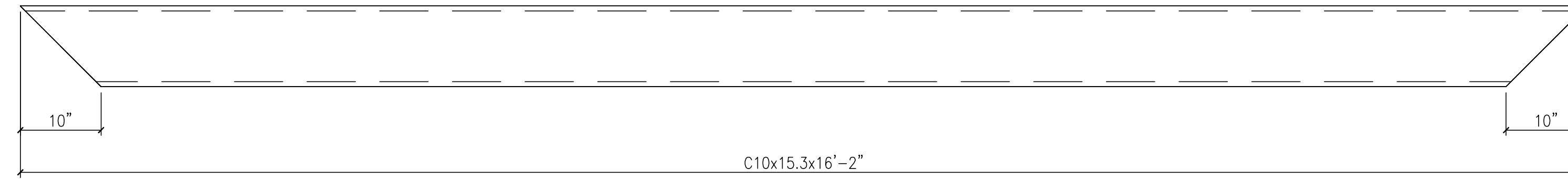
B	TMc	8-13-02	APPROVAL CHANGES
A	TMc	7-31-02	CHECKER CHANGES, RESUB TO G.C.
NO.	BY	DATE	REVISION
E DWG	E1		PROJECT DEER LAKES PARK - RESTROOM UPGRADE
MATERIAL	A36 UN		LOCATION VARIOUS
ELECTRODES	E70XX(LH)-STRUCTURAL		OWNER PA DEPT. OF PUBLIC WORKS
HOLES	13/16"Ø UN		FABRICATOR HIGHLAND STEEL
BOLTS	3/4"Ø A325 UN		RAFTER DETAILS
CLEANING	PER SPECS	DRN BY T. MCCONNELL	CKD BY MT SCALE NOTED
SHOP PAINT	SEE SH E1 NOTES	DRN DATE 7-24-02	CKD DATE 7-24-02 DWG
HIGHLAND STEEL, INC. 1037 DELAUM ROAD ST. MARYS, PENNSYLVANIA 15857 PH: 814-834-9456 FAX: 814-834-6456			D SIZE REVISION B
			ARM-001-2 JOB NO ARM-001 SHEET 4 OF 14



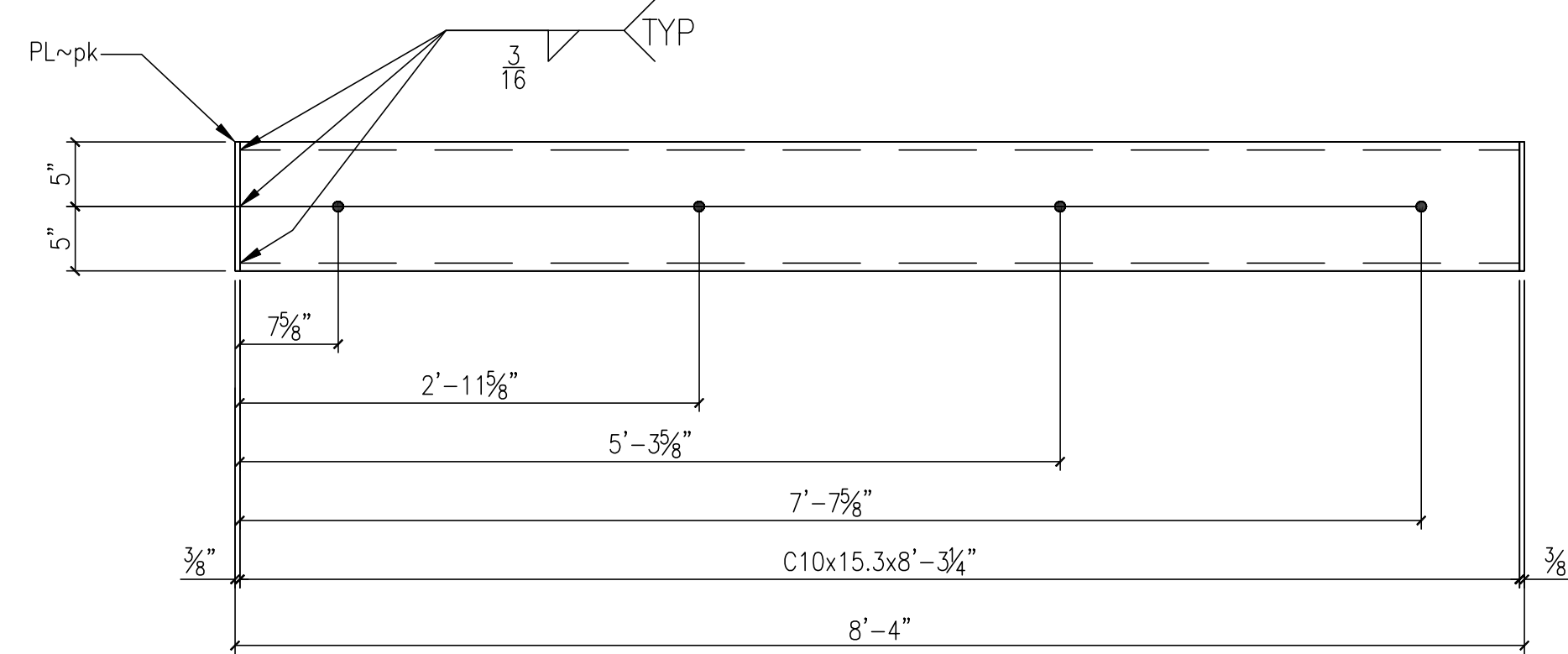
3 ~ CHANNELS ~ 5-C1L



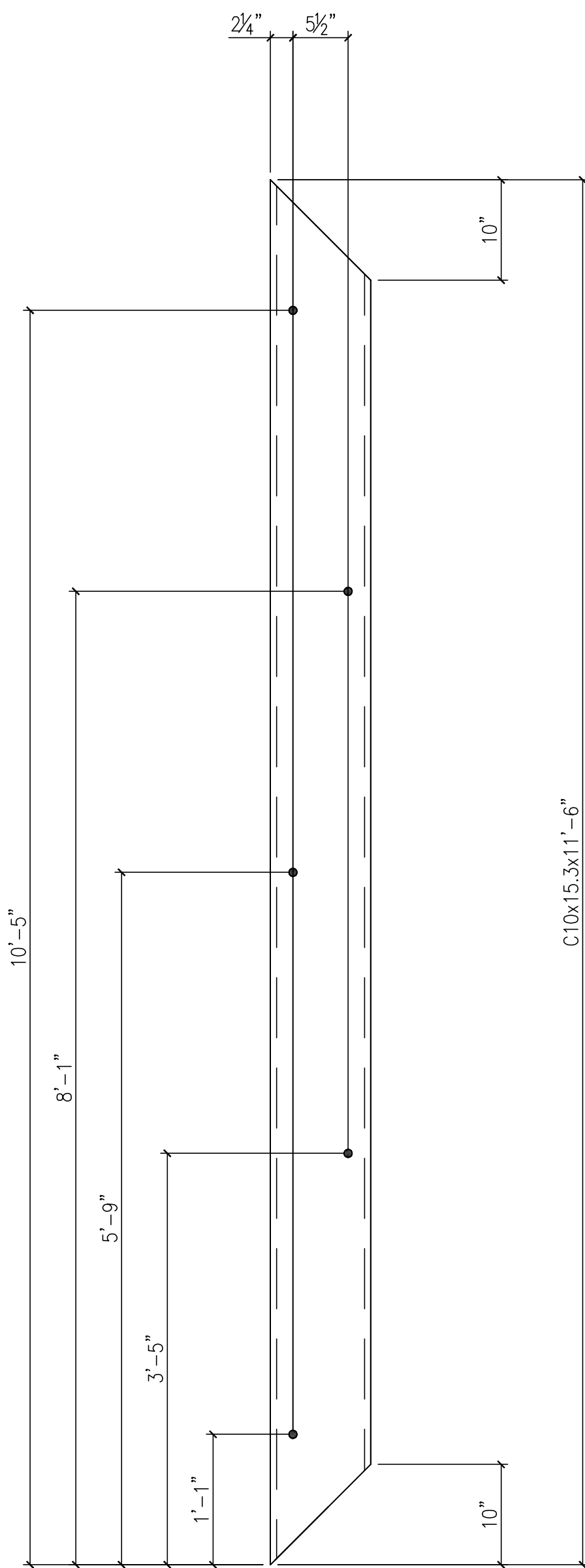
3 ~ CHANNELS ~ 5-C1R



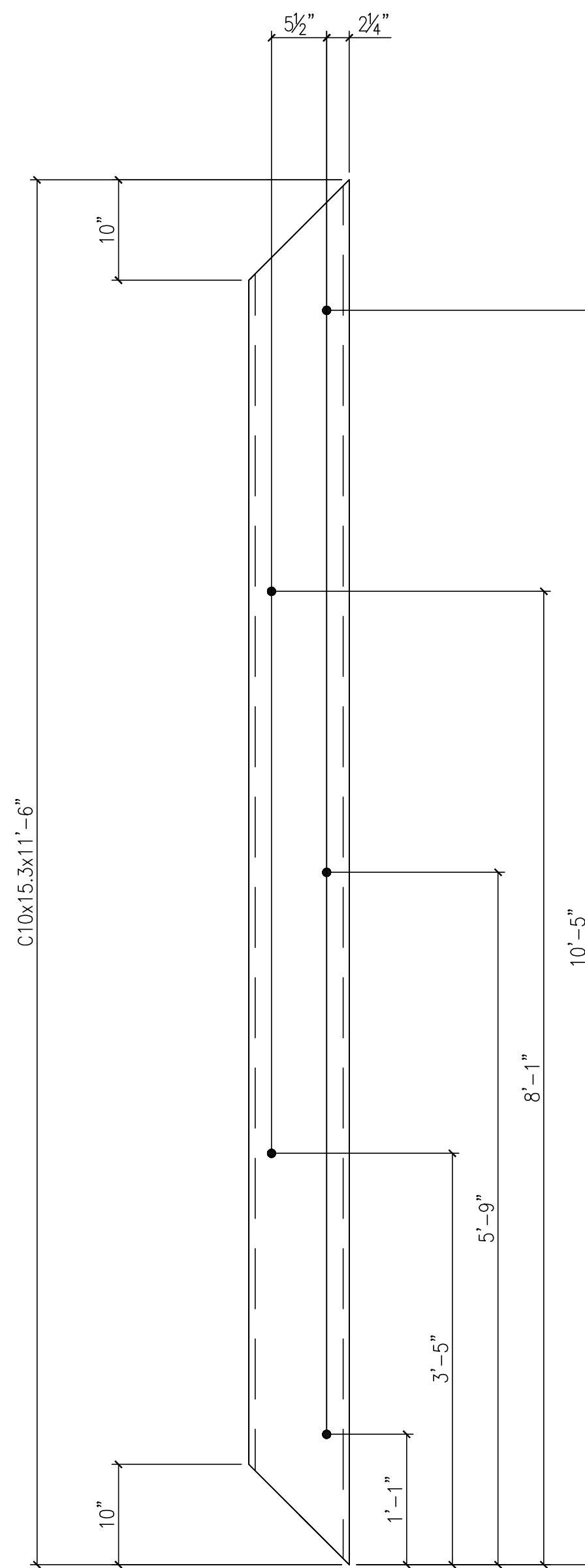
3 ~ CHANNELS ~ 5-C3



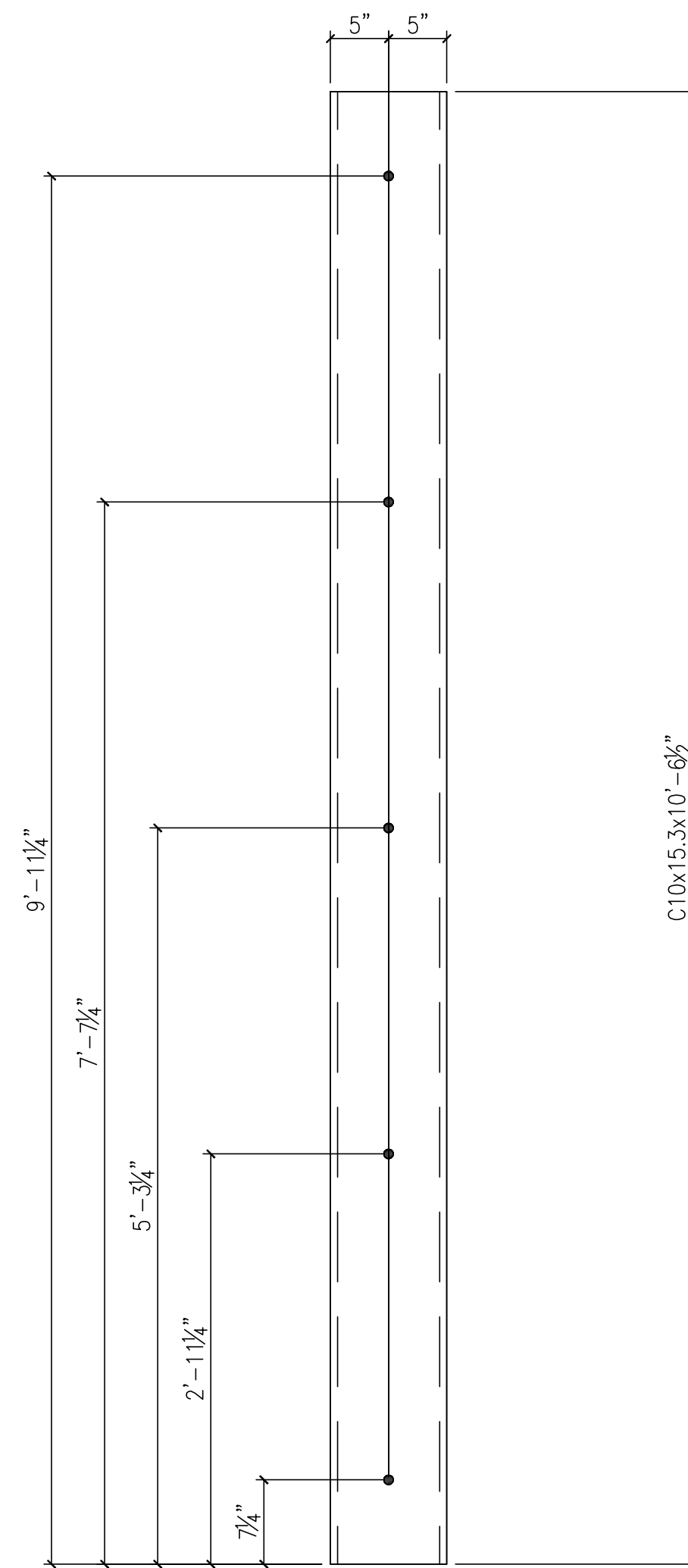
3 ~ CHANNELS ~ 5-C4



3 ~ CHANNELS ~ 5-C2L

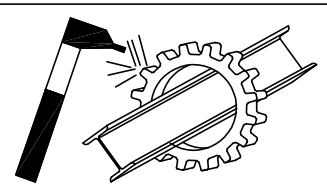


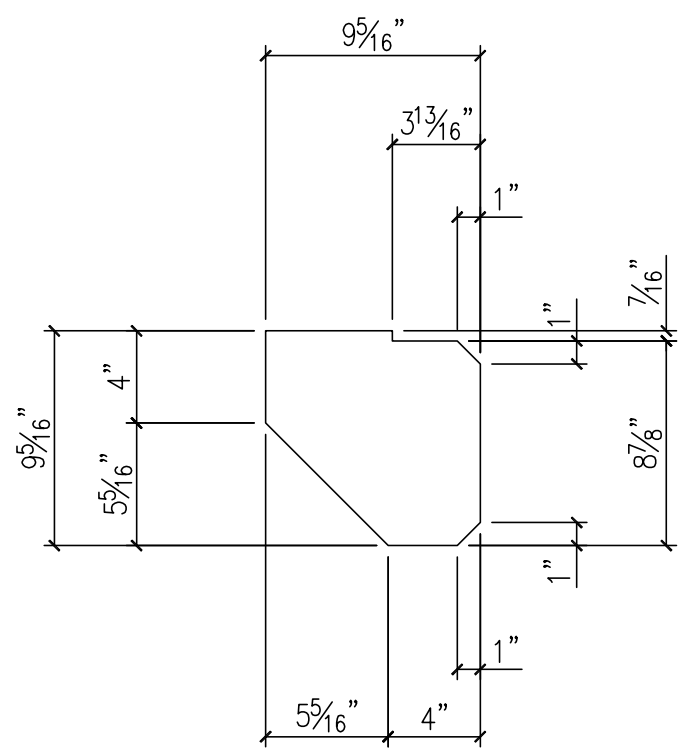
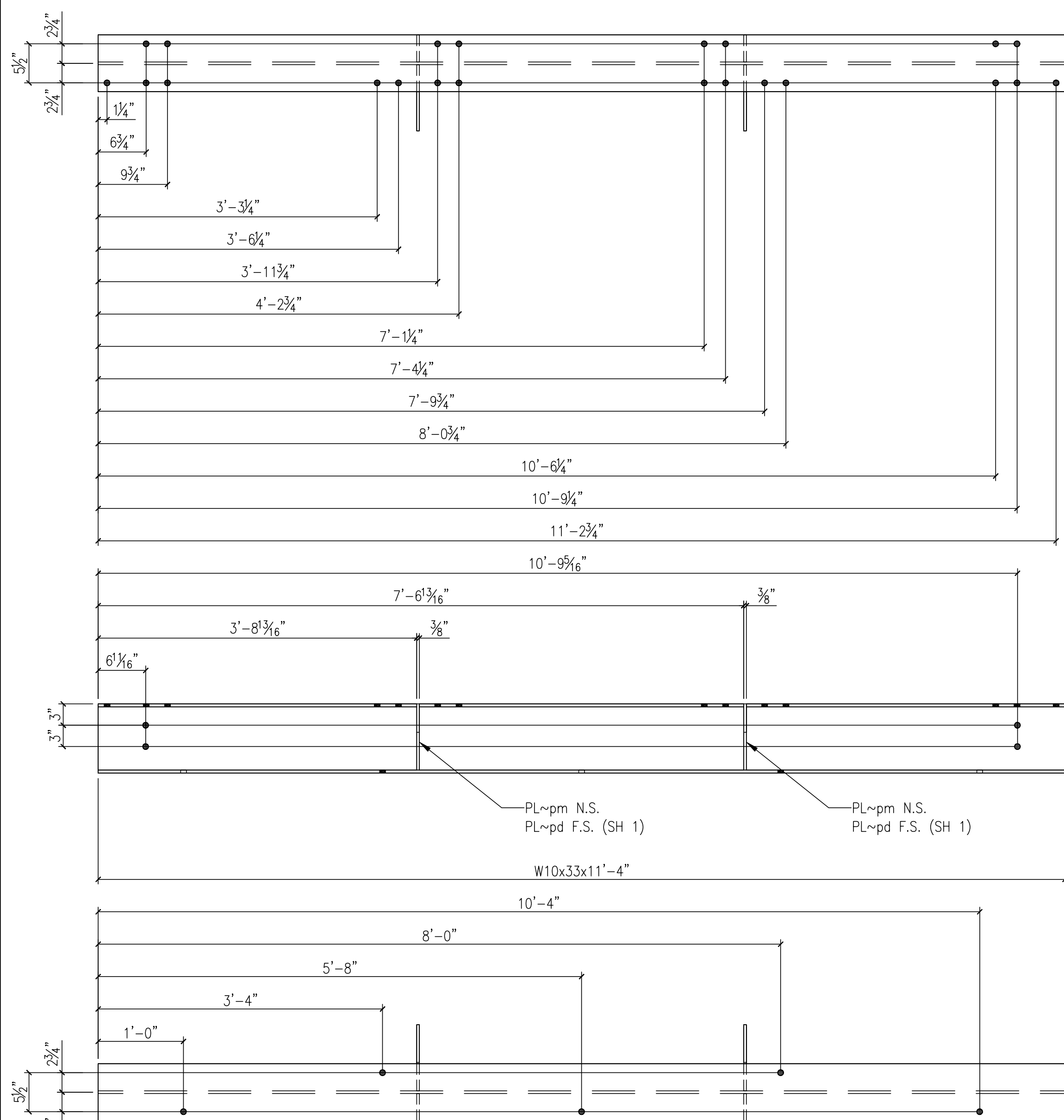
3 ~ CHANNELS ~ 5-C2R



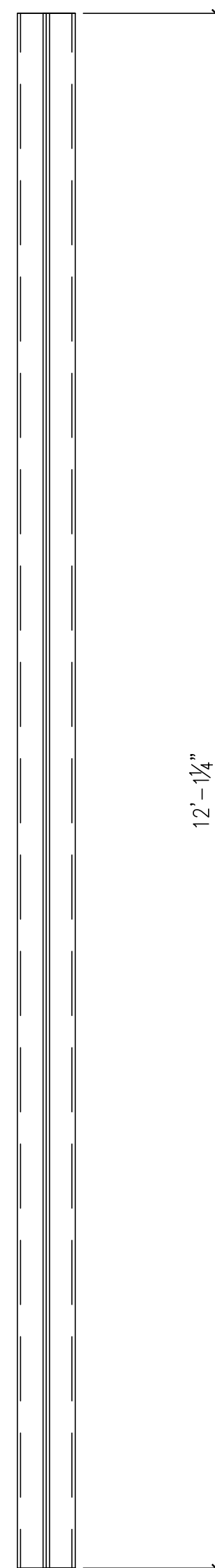
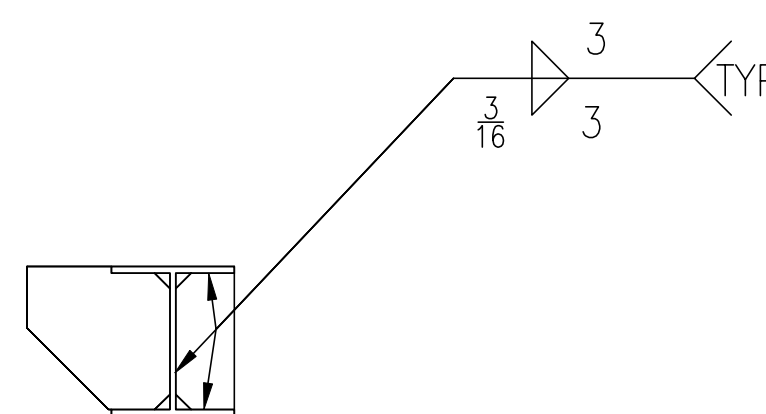
3 ~ CHANNELS ~ 5-C5

BILL OF MATERIAL						
PC MARK	QU.	MATERIAL	LENGTH		REMARKS	WEIGHT
			FT	IN		
5-C1L	3	C 10x15.3	4	5	B.C.1 E.	?
5-C1R	3	C 10x15.3	4	5	B.C.1 E.	?
5-C2L	3	C 10x15.3	11	6	B.C.2 E.	?
5-C2R	3	C 10x15.3	11	6	B.C.2 E.	?
5-C3	3	C 10x15.3	16	2	B.C.2 E.	?
5-C4	3	C 10x15.3	8	4		?
pk	6	PL 3/8x2 5/8	0	10		?
5-C5	3	C 10x15.3	10	6 1/2		?
TOT. WT.						3927

A	Tmc	7-31-02	CHECKER CHANGES, RESUB TO G.C.			
NO.	BY	DATE	REVISION			
E DWG	E1		PROJECT DEER LAKES PARK - RESTROOM UPGRADE			
MATERIAL	A36 UN		LOCATION VARIOUS			
ELECTRODES	E70XX (LH)		OWNER PA DEPT. OF PUBLIC WORKS			
HOLES	13/16"Ø UN		FABRICATOR HIGHLAND STEEL			
BOLTS	3/4"Ø A325 UN		RAFTER DETAILS			
CLEANING	PER SPECS	DRN BY T. McCONNELL	CKD BY MT	SCALE	NOTED	
SHOP PAINT	SEE SH E1 NOTES	DRN DATE 7-24-02	CKD DATE 7-24-02	DWG	ARM-001-2	
 HIGHLAND STEEL, INC. 1037 DELAUM ROAD ST. MARYS, PENNSYLVANIA 15857 PH: 814-834-9456 FAX: 814-834-6456			D SIZE REVISION A		JOB NO ARM-001 SHEET 5 OF 14	

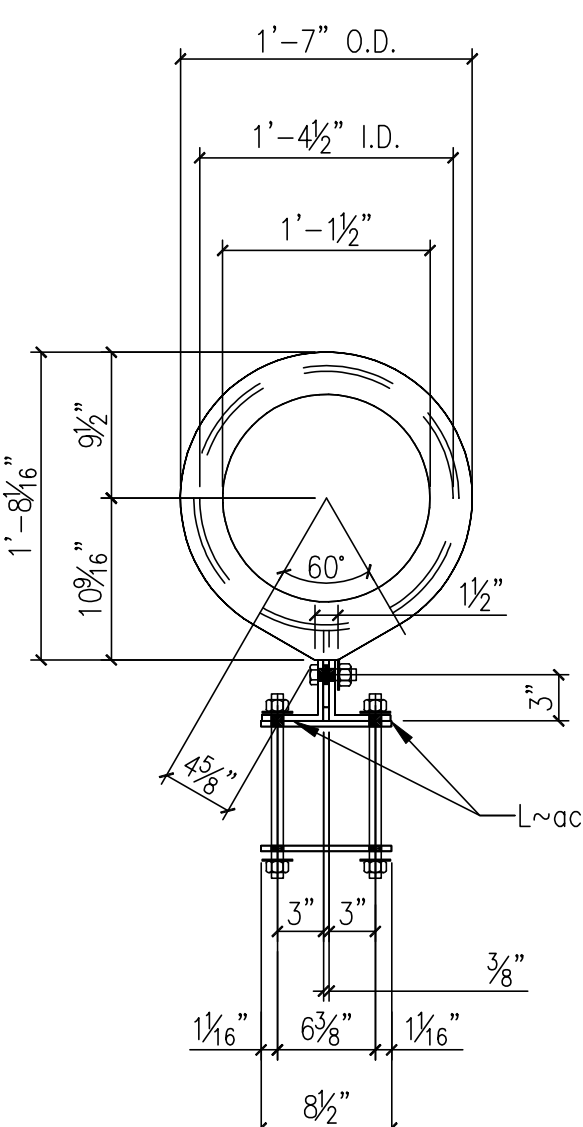


DETAIL - PL~pm (12)
SCALE: 1 1/2" = 1'-0"

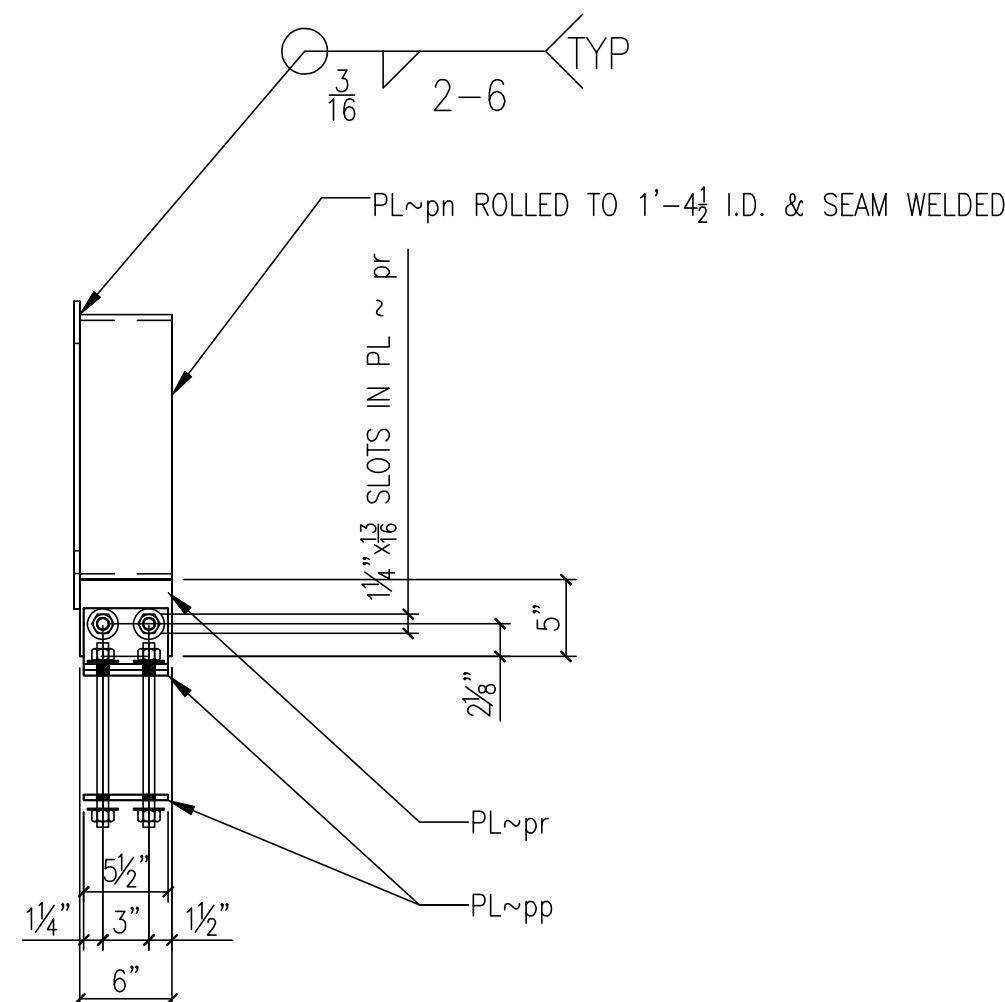


3 ~ BEAMS ~ 6-B1L (AS SHOWN)

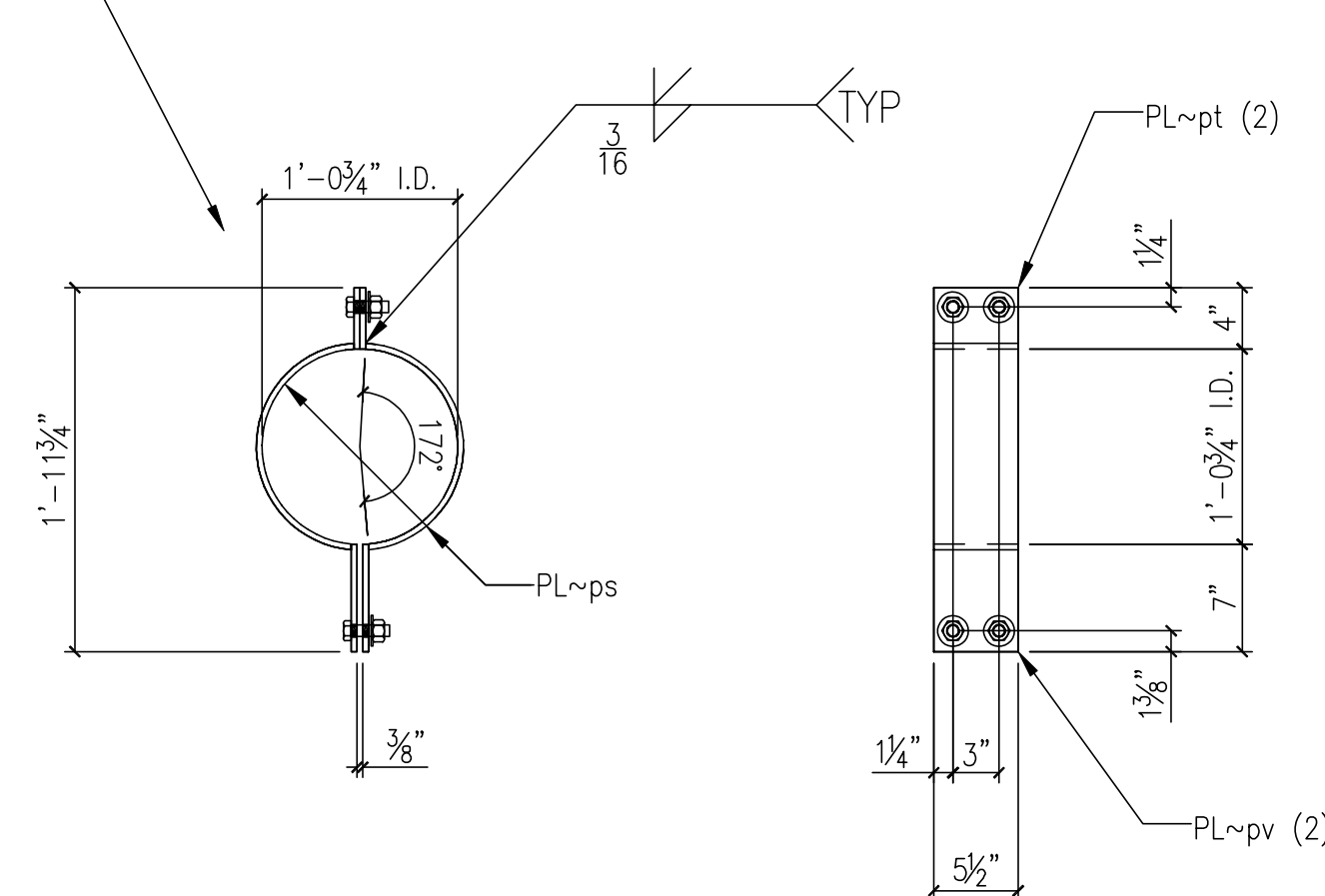
3 ~ BEAMS ~ 6-B1R (OPP HAND)



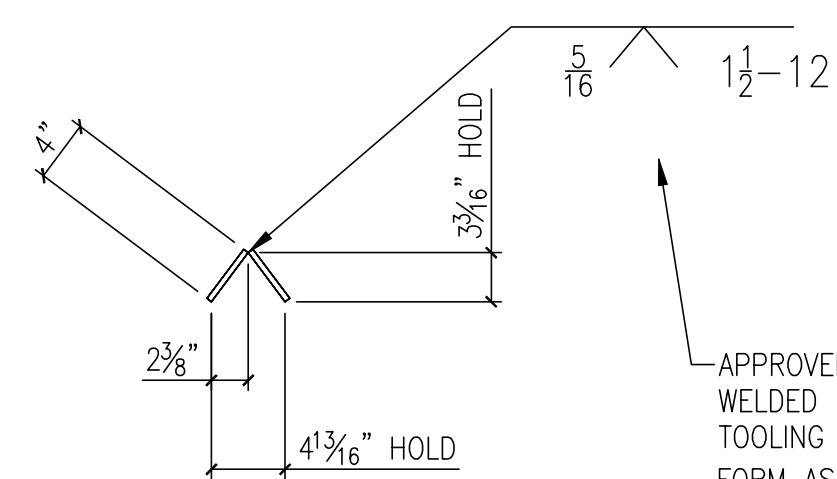
5 ~ PIPE BRACKETS ~ 6-M1



APPROVER NOTE:
2 PIECE DEVIATION FOR
SIMPLIFICATION OF FABRICATION



5 ~ PIPE BRACKETS ~ 6-M1



APPROVER NOTE:
WELDED DEVIATION DUE TO
TOOLING NOT AVAILABLE TO
FORM AS 3/8" BENT PL OVER 8'

3 ~ RIDGE PLATES ~ 6-RP1

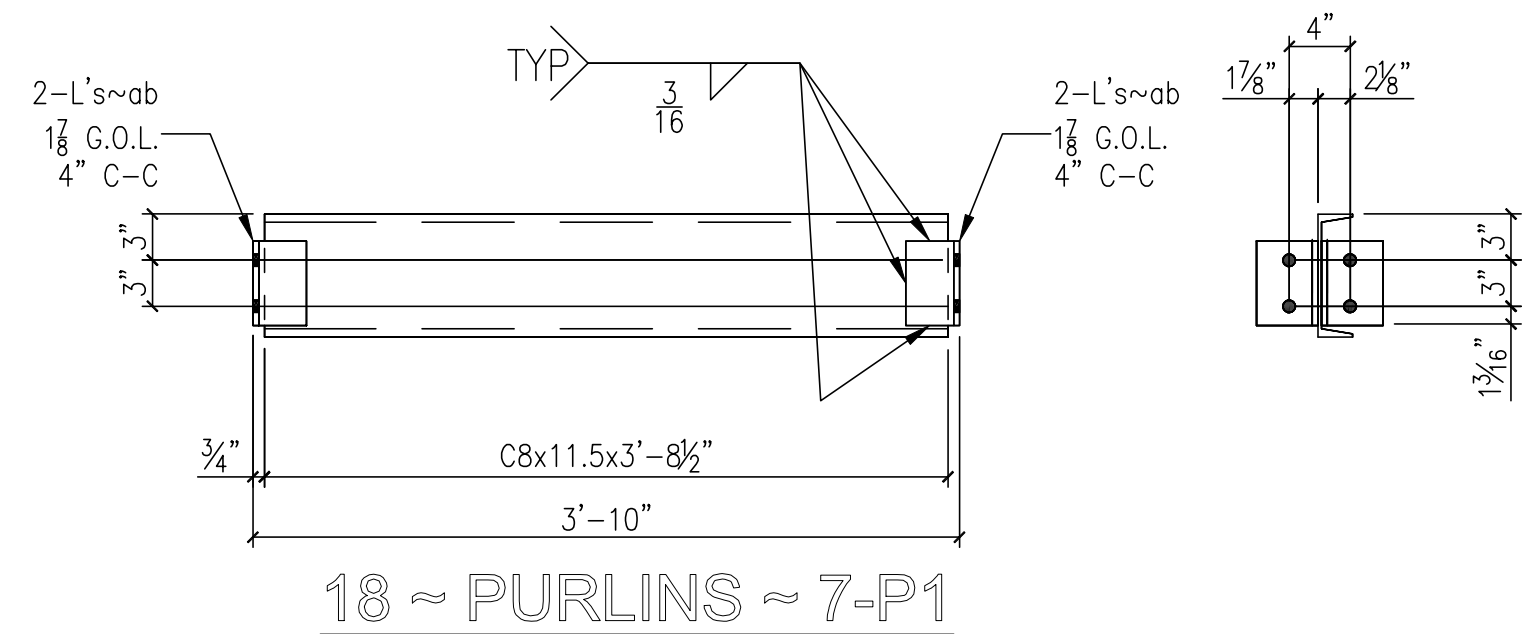
BILL OF MATERIAL						
PC MARK	QU.	MATERIAL	LENGTH		REMARKS	WEIGHT
			FT	IN		
6-B1L	3	W 10x33	11	4		1122
pd	6	PL 3/8x3 13/16	0	8 7/8		22
pm	6	PL 3/8x9 5/16	0	9 5/16	SHAPED	55
6-B1R	3	W 10x33	11	4		1122
pd	6	PL 3/8x3 13/16	0	8 7/8		22
pm	6	PL 3/8x9 5/16	0	9 5/16	SHAPED	55
6-RP1	3	RIDGE PLATES	-	-		-
bb	6	BAR 3/8x4	12	1 1/4		370
6-M1	5	PIPE BRACKET	-	-		-
ac	5	L 4x4x3/8	0	5 1/2		22
pn	10	PL 3/8x6	4	5	ROLLED+GRAB LG	337
pp	10	PL 3/8x5 1/2	0	8 1/2		50
pr	5	PL 3/8x5	0	6		16
BOLT	10	3/4" ø A307 HHMB	0	2 1/2	W/ HHN & FW	7
BOLT	20	3/4" ø A307 STUD	1	0	W/ (2)HHN & (2)FW	35
6-M2	5	PIPE BRACKET	-	-		-
pt	10	PL 3/8x4	0	5 1/2		23
pv	5	PL 3/8x5 1/2	0	7		20
ps	10	PL 3/8x5 1/2	1	7 3/4	ROLLED+GRAB LG	115
BOLT	10	3/4" ø A307 HHMB	0	2 1/2	W/ HHN & FW	7
BOLT	10	3/4" ø A307 HHMB	0	2 1/4	W/ HHN & FW	6
TOT. WT.						3407

NO.	BY	DATE	REVISION
A	TMc	7-31-02	CHECKER CHANGES, RESUB TO G.C.
E DWG	E1		PROJECT DEER LAKES PARK - RESTROOM UPGRADE
MATERIAL	A36 UN		LOCATION VARIOUS
ELECTRODES	E70XX (LH)		OWNER PA DEPT. OF PUBLIC WORKS
HOLES	13/16" ø UN		FABRICATOR HIGHLAND STEEL
BOLTS	3/4" ø A325 UN		RAFTER DETAILS
CLEANING	PER SPECS	DRN BY T. McCONNELL	CKD BY MT SCALE NOTED
SHOP PAINT	SEE SH E1 NOTES	DRN DATE 7-24-02	CKD DATE 7-24-02

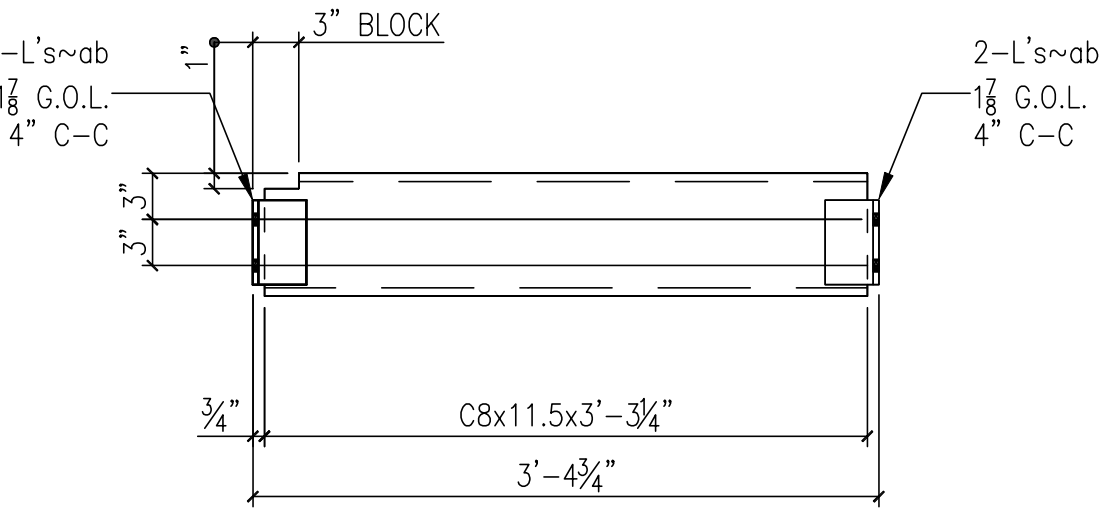
HIGHLAND STEEL, INC.
1037 DELAUM ROAD
ST. MARYS, PENNSYLVANIA 15857
PH: 814-834-9456 FAX: 814-834-6456

D
SIZE
REVISION
A

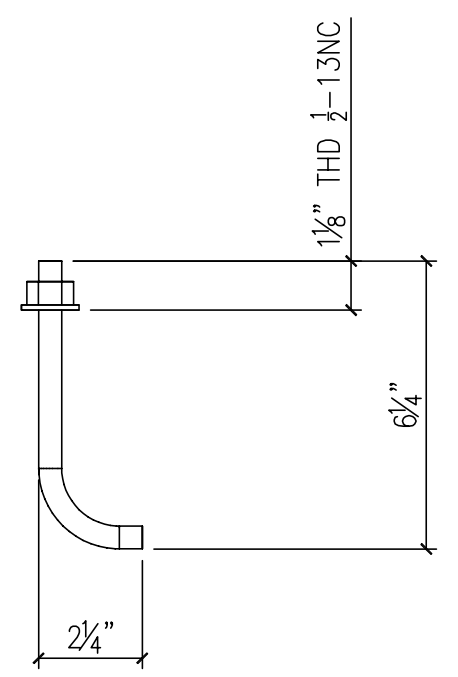
DWG
ARM-001-2
JOB NO
ARM-001
SHEET 6 OF 14



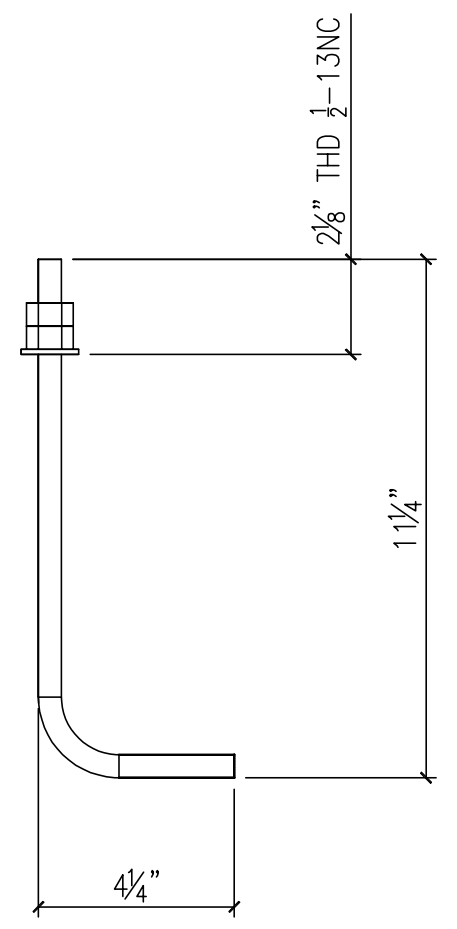
18 ~ PURLINS ~ 7-P1



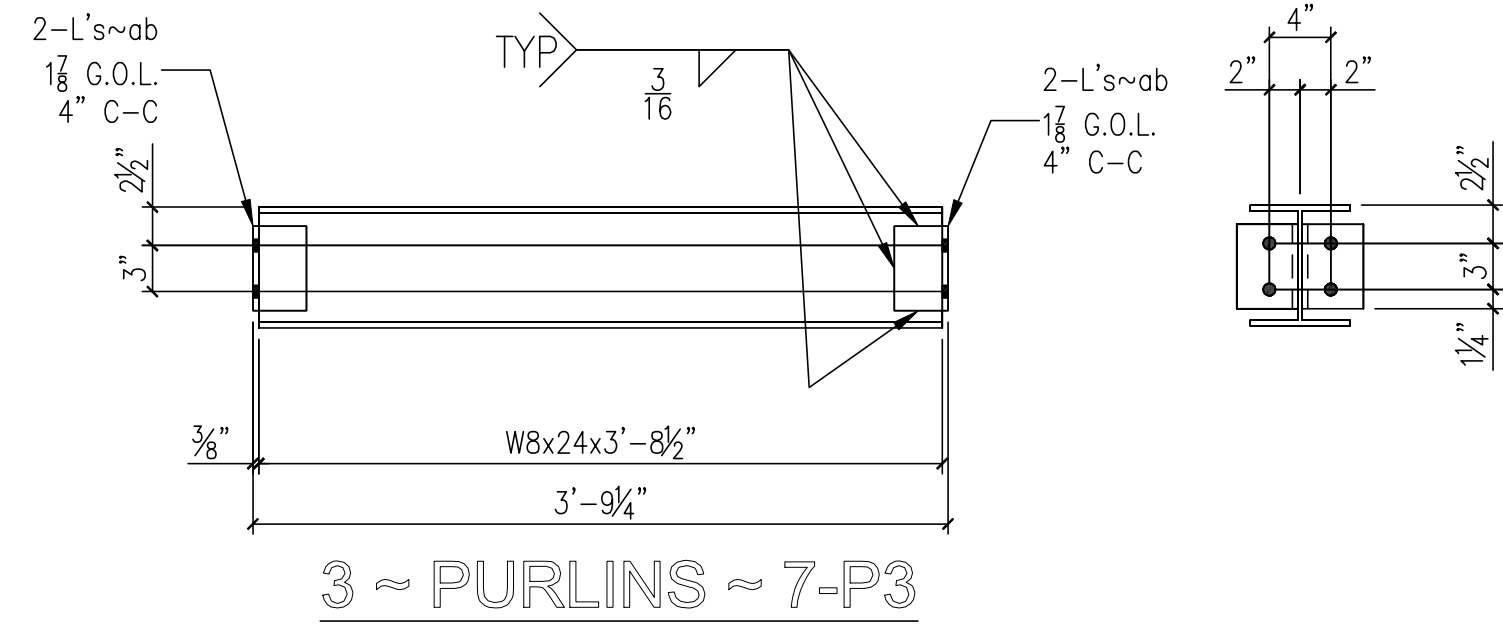
18 ~ PURLINS ~ 7-P2L (AS SHOWN)
18 ~ PURLINS ~ 7-P2R (OPP HAND)



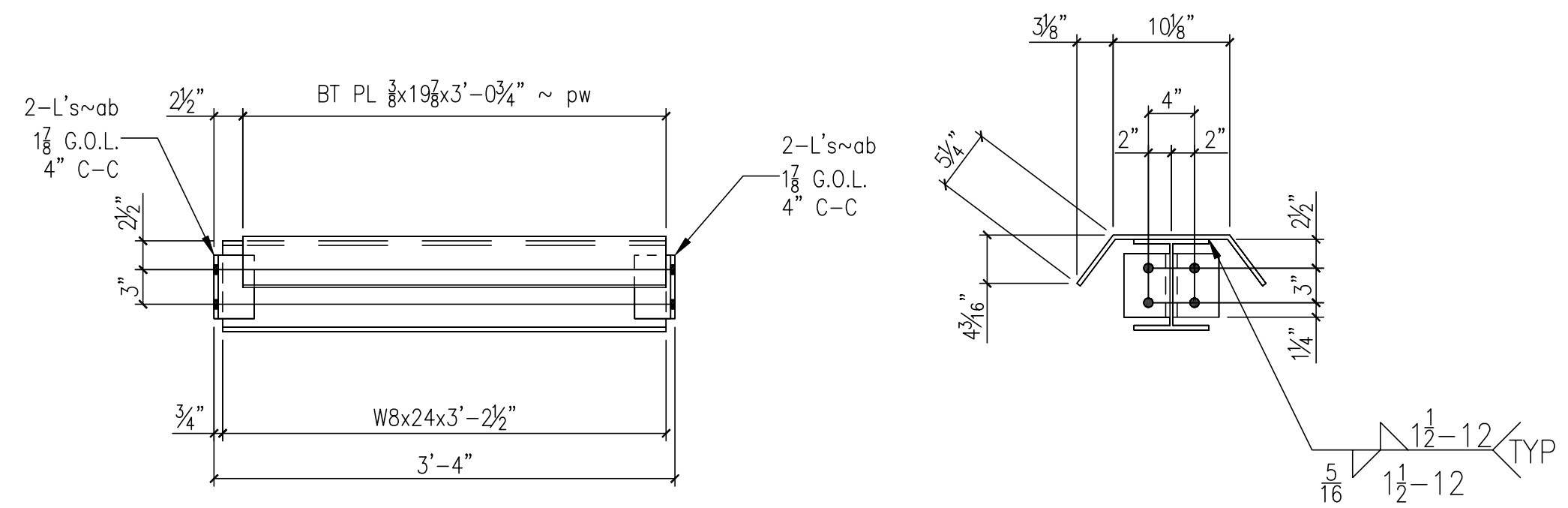
27 ~ ANCHOR BOLTS ~ 7-AB2 (3) BUILDING 2
11 ~ ANCHOR BOLTS ~ 7-AB2 BUILDING 1



30 ~ ANCHOR BOLTS ~ 7-AB1 (3) BUILDING 2
16 ~ ANCHOR BOLTS ~ 7-AB1 BUILDING 1



3 ~ PURLINS ~ 7-P3



3 ~ PURLINS ~ 7-P4L (AS SHOWN)
3 ~ PURLINS ~ 7-P4R (OPP HAND)

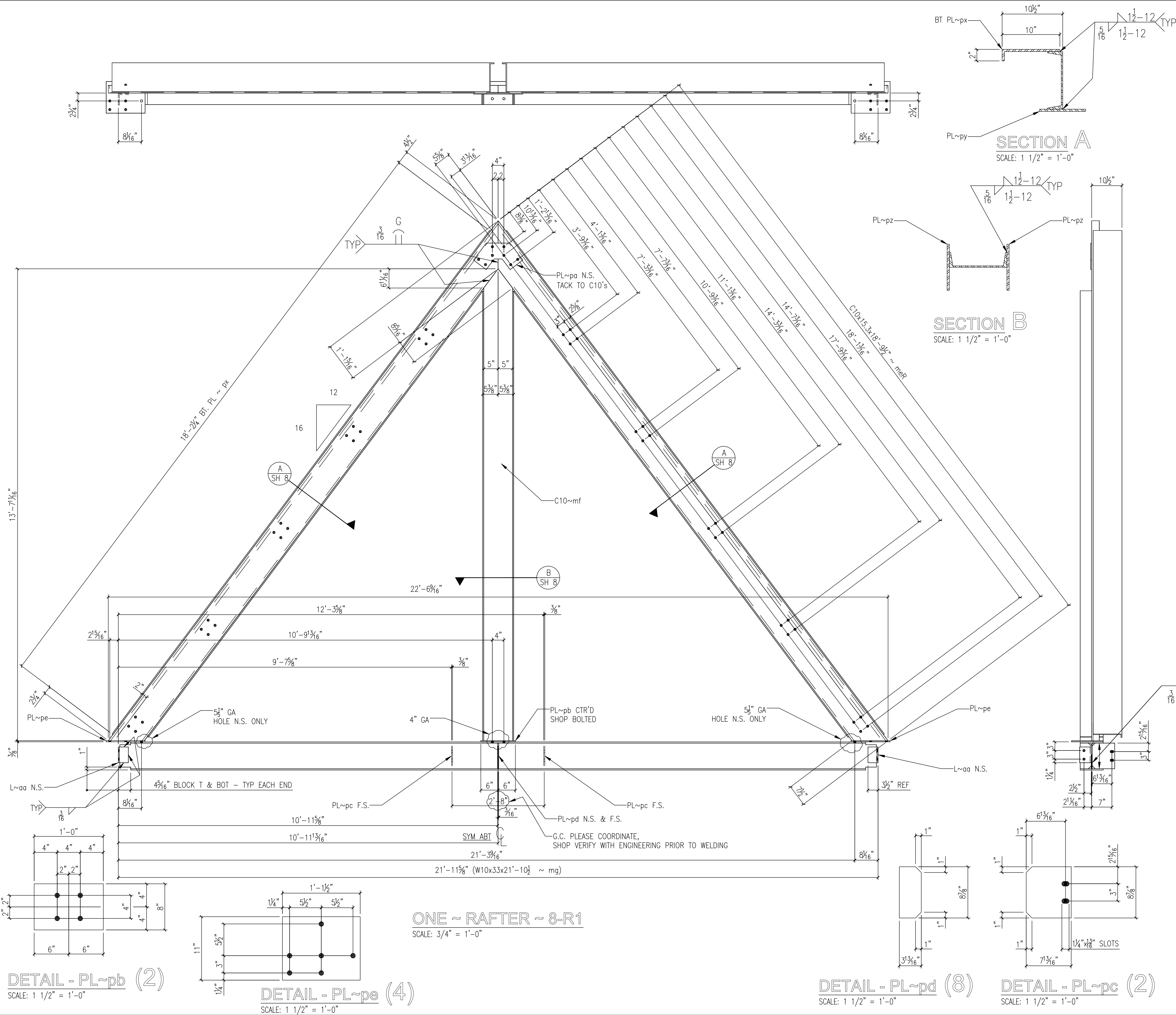
BILL OF MATERIAL						
PC MARK	QU.	MATERIAL	LENGTH		REMARKS	WEIGHT
			FT	IN		
7-P1	18	C 8x11.5	3	8 1/2		768
ab	72	L 4x3-1/2x3/8	0	5 1/2		300
7-P2L	18	C 8x11.5	3	3 1/4		677
ab	72	L 4x3-1/2x3/8	0	5 1/2		300
7-P2R	18	C 8x11.5	3	3 1/4		677
ab	72	L 4x3-1/2x3/8	0	5 1/2		300
7-P3	3	W8x24	3	8 1/2		267
ab	12	L 4x3-1/2x3/8	0	5 1/2		50
7-P4L	3	W8x24	3	2 1/2		231
pw	3	PL 3/8x19 7/8	3	0 3/4	BENT	233
ab	12	L 4x3-1/2x3/8	0	5 1/2		50
7-AB1	46	ANCHOR BOLT			THREADED & BENT	
	46	RD-1/2" Ø A307 OR A36	1	2 1/2	W/ (2)HHN & (1)FW	46
7-AB2	38	ANCHOR BOLT			THREADED & BENT	
	38	RD-1/2" Ø A307 OR A36	0	7 1/2	W/ HHN & FW	20
					TOT. WT.	3919

NO.	BY	DATE	REVISION
A	TMc	7-31-02	CHECKER CHANGES, RESUB TO G.C.

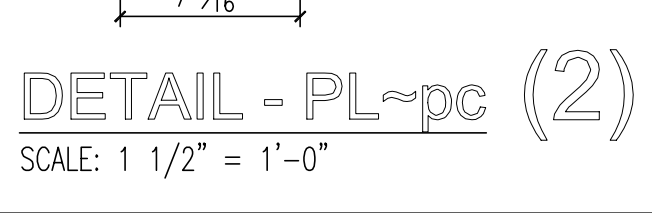
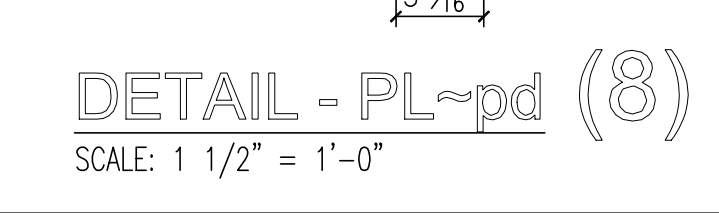
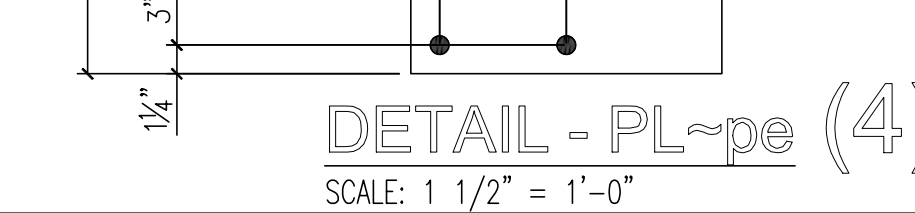
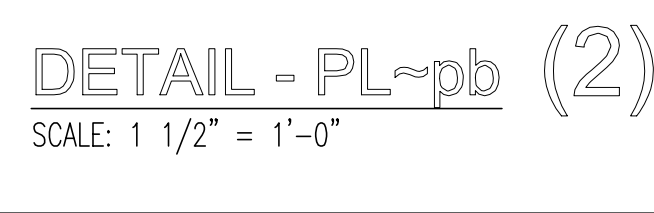
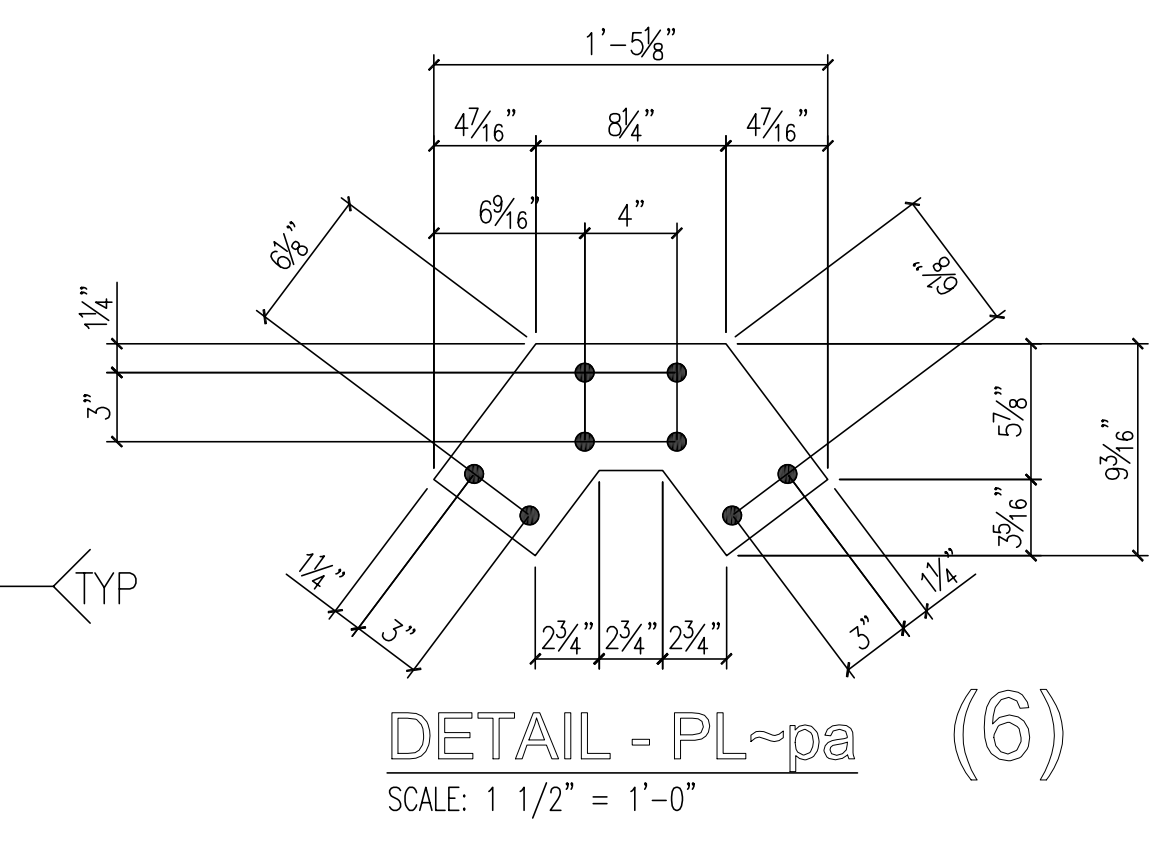
E DWG	E1	PROJECT DEER LAKES PARK - RESTROOM UPGRADE
MATERIAL	A36 UN	LOCATION VARIOUS
ELECTRODES	E70XX (LH)	OWNER PA DEPT. OF PUBLIC WORKS
HOLES	13/16" Ø UN	FABRICATOR HIGHLAND STEEL
BOLTS	3/4" Ø A325 UN	RAFTER DETAILS
CLEANING	PER SPECS	DRN BY T. McCONNELL CKD BY MT SCALE NOTED
SHOP PAINT	SEE SH E1 NOTES	DRN DATE 7-24-02 CKD DATE 7-24-02 DWG

	HIGHLAND STEEL, INC. 1037 DELAUM ROAD ST. MARYS, PENNSYLVANIA 15857 PH: 814-834-9456 FAX: 814-834-6456	D SIZE REVISION A	ARM-001-2 JOB NO ARM-001 SHEET 7 OF 14
--	--	-----------------------------------	---

N:\Jobs\ARM\001\ARM\001-2_A.dwg, 07/31/2002 02:53:08 PM

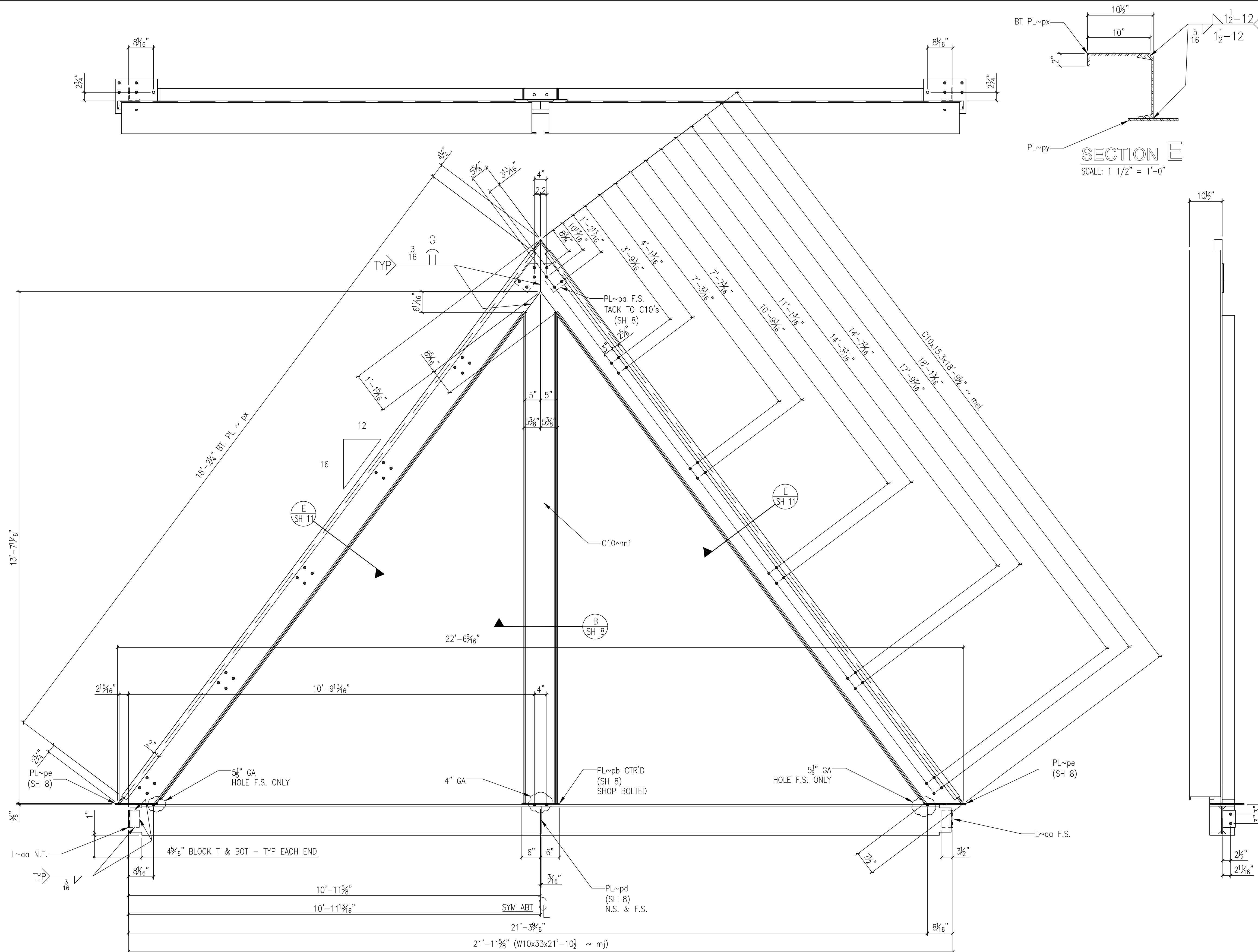


PC MARK	QU.	MATERIAL	LENGTH		REMARKS	WEIGHT
			FT	IN		
8-R1	ONE	RAFTER	-	-		-
meR	ONE	C 10x15.3	18	9 1/2	B.C.2 E.	288
meL	ONE	C 10x15.3	18	9 1/2	B.C.2 E.	288
mf	ONE	C 10x15.3	13	7 11/16	B.C.1 E.	209
mg	ONE	W 10x33	15	2 1/2		502
pa	ONE	PL 3/8x9 3/16	1	5 1/8	SHAPED	17
pb	ONE	PL 3/8x8	1	0		10
pc	2	PL 3/8x7 13/16	0	8 7/8		15
pd	2	PL 3/8x3 13/16	0	8 7/8		7
pe	2	PL 3/8x11	1	1 1/2		32
px	2	PL 3/8x10	18	2 1/4	BENT	463
py	2	PL 3/8x8	12	1		246
pz	2	PL 3/8x8	9	8 7/8		198
aa	2	L 4x3-1/2x3/8	0	5 1/2		8
TOT. WT.						2282



NO.	BY	DATE	REVISION		
E DWG	E2		PROJECT DEER LAKES PARK - RESTROOM UPGRADE		
MATERIAL	A36 UN		LOCATION VARIOUS		
ELECTRODES	E70XX (LH)		OWNER PA DEPT. OF PUBLIC WORKS		
HOLES	13/16" UN		FABRICATOR HIGHLAND STEEL		
BOLTS	3/4" A325 UN		RAFTER DETAILS		
CLEANING	PER SPECS	DRN BY T. McCONNELL	CKD BY MT	SCALE NOTED	
SHOP PAINT	SEE SH E2 NOTES	DRN DATE 7-30-02	CKD DATE 7-30-02	DWG	
 1037 DELAUM ROAD ST. MARYS, PENNSYLVANIA 15857 PH: 814-834-9456 FAX: 814-834-6456					D
					SIZE
					ARM-001-1
					JOB NO
					ARM-001
					SHEET 8 OF 14

N:\juba\ARM\001\ARM\001-1.dwg, 07/31/2002 02:29:51 PM



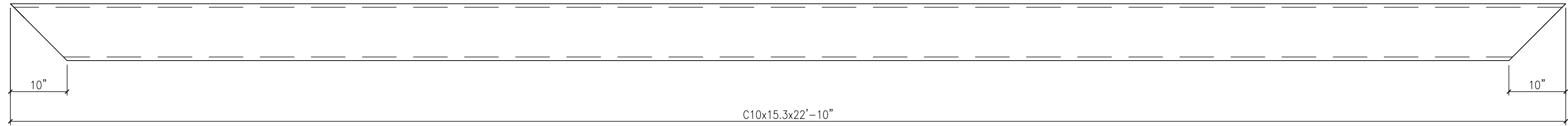
BILL OF MATERIAL						
PC MARK	QU.	MATERIAL	LENGTH		REMARKS	WEIGHT
			FT	IN		
11-R4	ONE	RAFTER	-	-		-
meR	ONE	C 10x15.3	18	9 1/2	B.C.2 E.	288
meL	ONE	C 10x15.3	18	9 1/2	B.C.2 E.	288
mf	ONE	C 10x15.3	13	7 11/16	B.C.1 E.	209
mj	ONE	W 10x33	15	2 1/2		502
pa	ONE	PL 3/8x9 3/16	1	5 1/8	SHAPED	17
pb	ONE	PL 3/8x8	1	0		10
pd	2	PL 3/8x3 13/16	0	8 7/8		7
pe	2	PL 3/8x11	1	1 1/2		32
px	2	PL 3/8x10	18	2 1/4	BENT	463
py	2	PL 3/8x8	12	1		246
pz	2	PL 3/8x8	9	8 7/8		198
aa	2	L 4x3-1/2x3/8	0	5 1/2		8
TOT. WT.						2282

ONE ~ RAFTER ~ 11-R4
SCALE: 3/4" = 1'-0"

NO.	BY	DATE	REVISION		
E DWG	E2		PROJECT DEER LAKES PARK - RESTROOM UPGRADE		
MATERIAL	A36 UN		LOCATION VARIOUS		
ELECTRODES	E70XX (LH)		OWNER PA DEPT. OF PUBLIC WORKS		
HOLES	13/16" UN		FABRICATOR HIGHLAND STEEL		
BOLTS	3/4" A325 UN		RAFTER DETAILS		
CLEANING	PER SPECS	DRN BY T. McCONNELL	CKD BY MT	SCALE NOTED	
SHOP PAINT	SEE SH E2 NOTES	DRN DATE 7-30-02	CKD DATE 7-30-02	DWG	
				ARM-001-1	
				JOB NO	ARM-001
				REVISION	
				SHEET 11 OF 14	

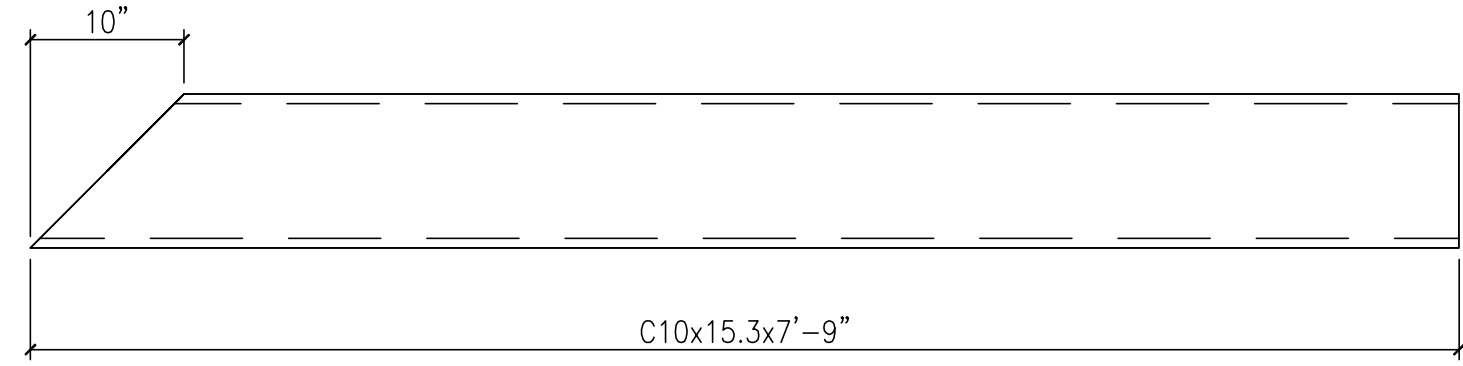
HIGHLAND STEEL, INC.
1037 DELAUM ROAD
ST. MARYS, PENNSYLVANIA 15857
PH: 814-834-9456 FAX: 814-834-6456

N:\jobs\ARM-001\ARM-001-1.dwg, 07/31/2002 02:32:38 PM



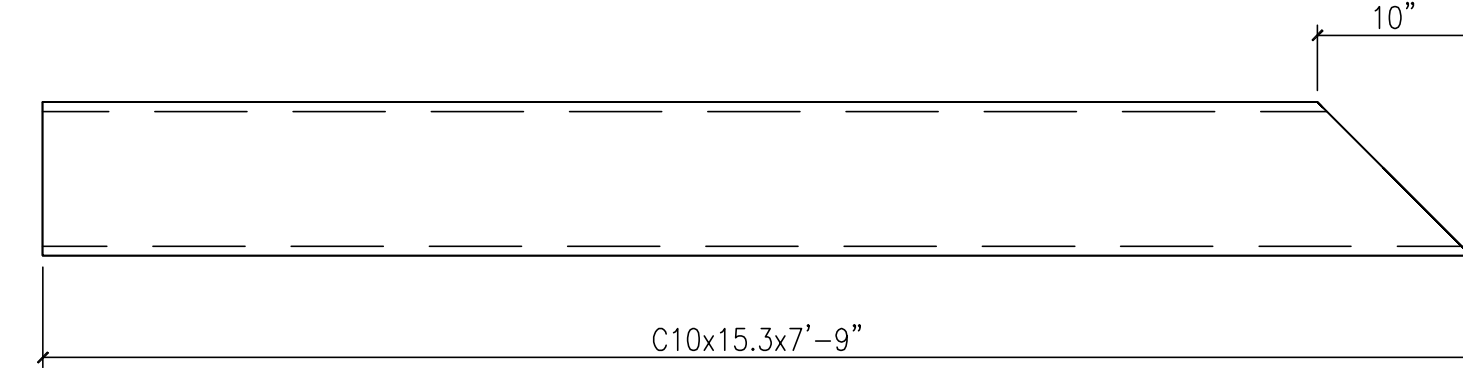
C10x15.3x22'-10"

ONE ~ CHANNEL ~ 12-C3



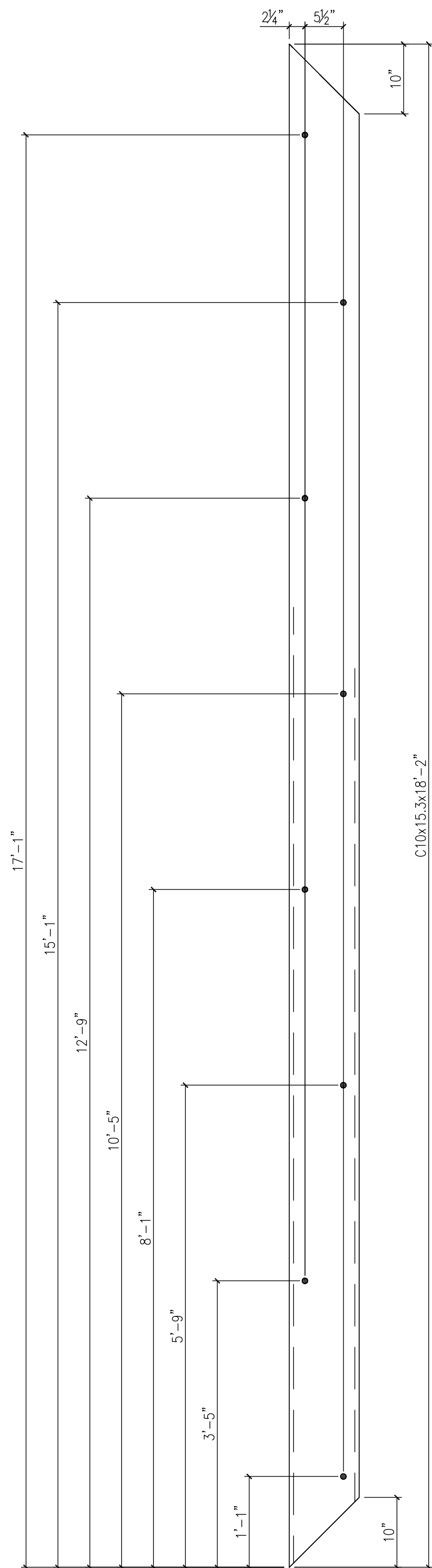
C10x15.3x7'-9"

ONE ~ CHANNEL ~ 12-C1L



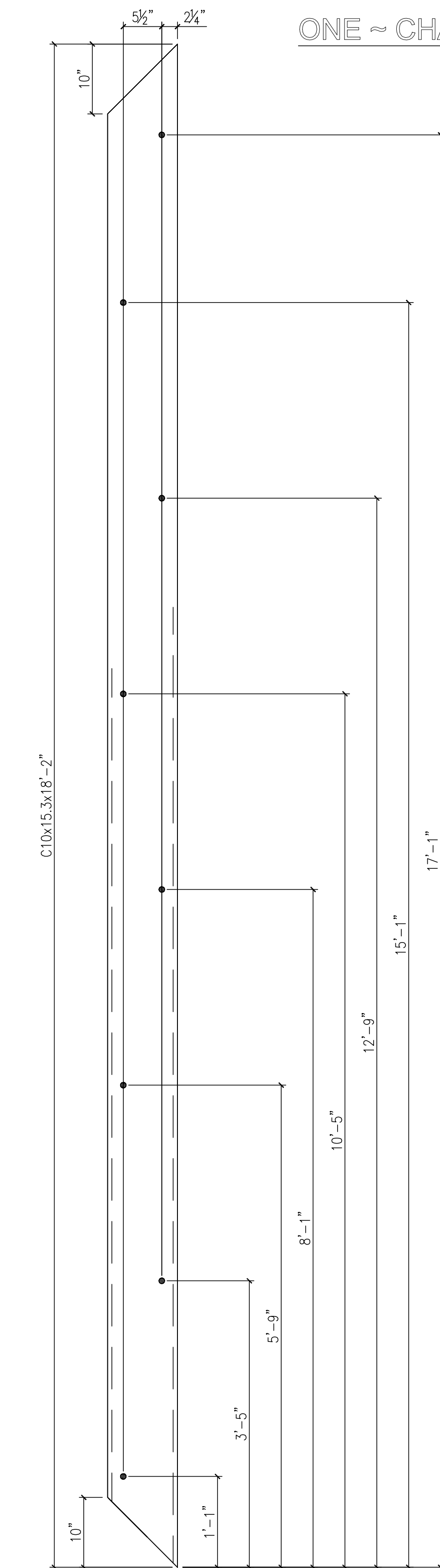
C10x15.3x7'-9"

ONE ~ CHANNEL ~ 12-C1R



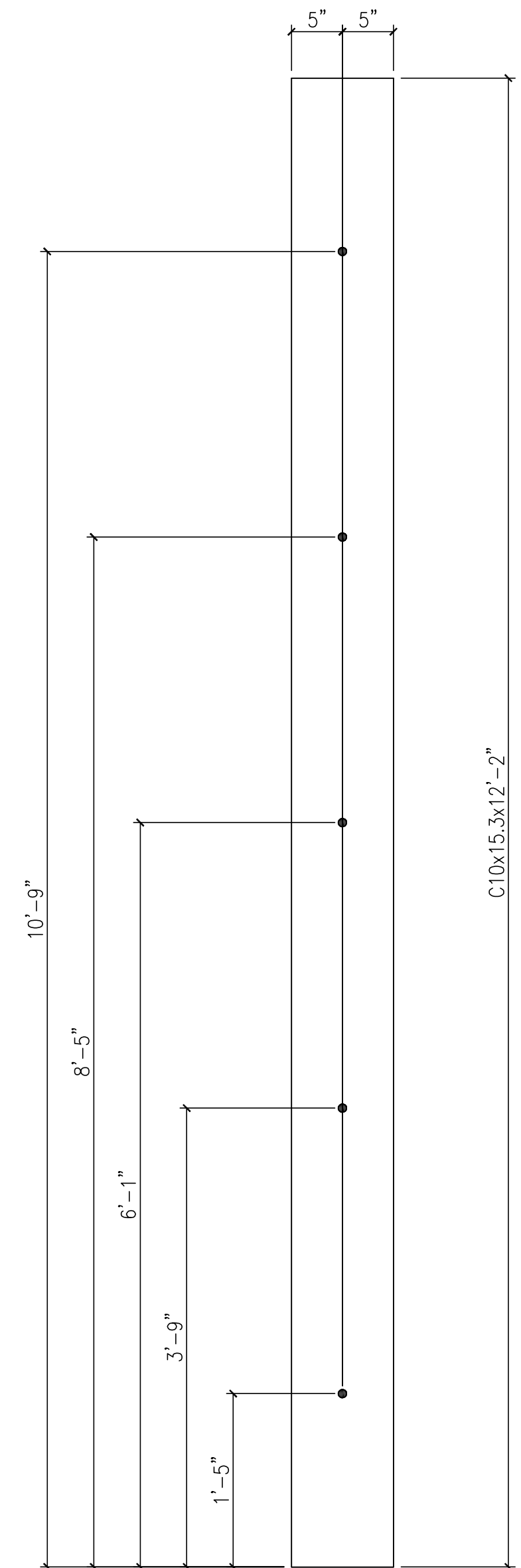
C10x15.3x18'-2"

ONE ~ CHANNEL ~ 12-C2L



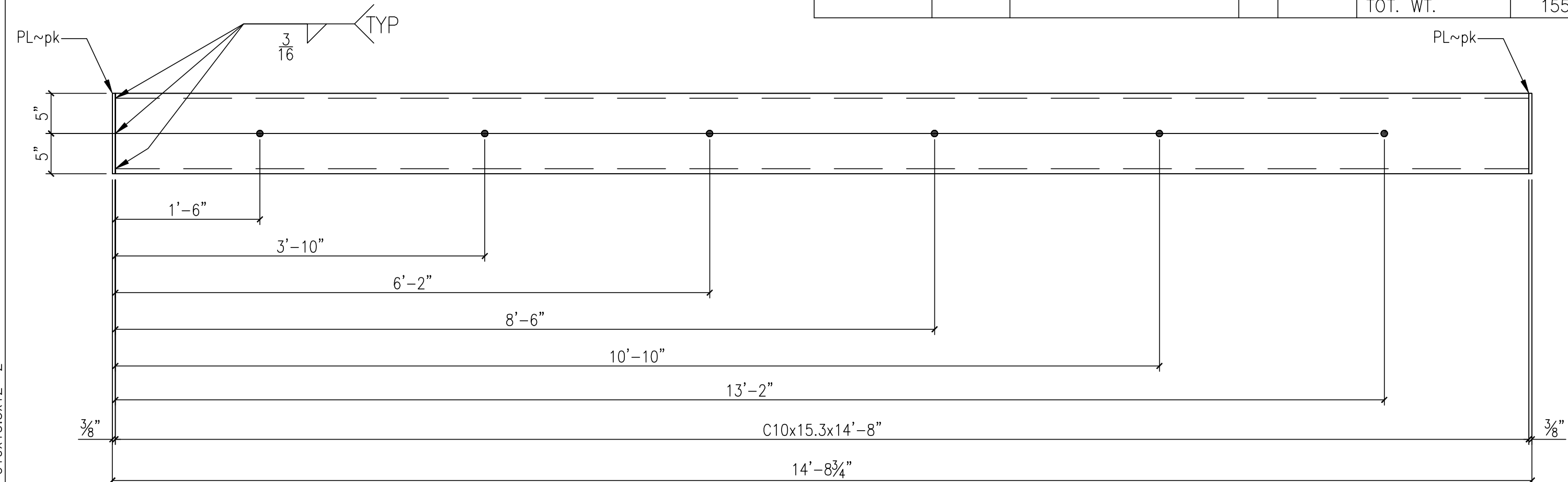
C10x15.3x18'-2"

ONE ~ CHANNEL ~ 12-C2R



C10x15.3x12'-2"

ONE ~ CHANNEL ~ 12-C5



C10x15.3x14'-8"

ONE ~ CHANNEL ~ 12-C4

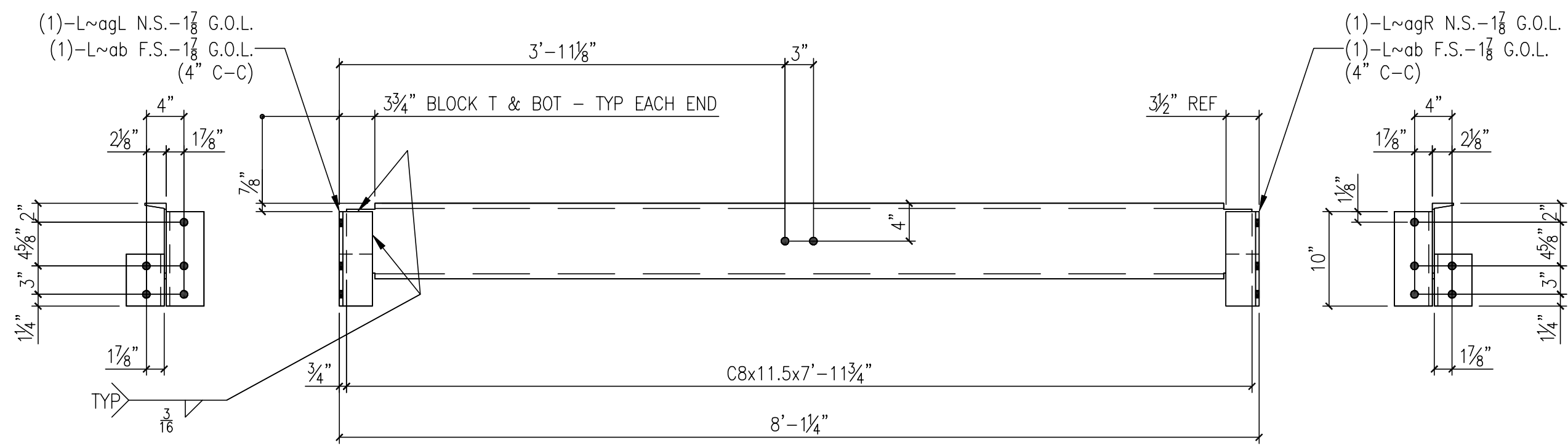
BILL OF MATERIAL

PC MARK	QU.	MATERIAL	LENGTH		REMARKS	WEIGHT
			FT	IN		
12-C1L	ONE	C 10x15.3	7	9	B.C.1 E.	119
12-C1R	ONE	C 10x15.3	7	9	B.C.1 E.	119
12-C2L	ONE	C 10x15.3	18	2	B.C.2 E.	278
12-C2R	ONE	C 10x15.3	18	2	B.C.2 E.	278
12-C3	ONE	C 10x15.3	22	10	B.C.2 E.	349
12-C4	ONE	C 10x15.3	14	8		224
pk	2	PL 3/8x2 5/8	0	10		6
12-C5	ONE	C 10x15.3	12	2		186
TOT. WT.						1559

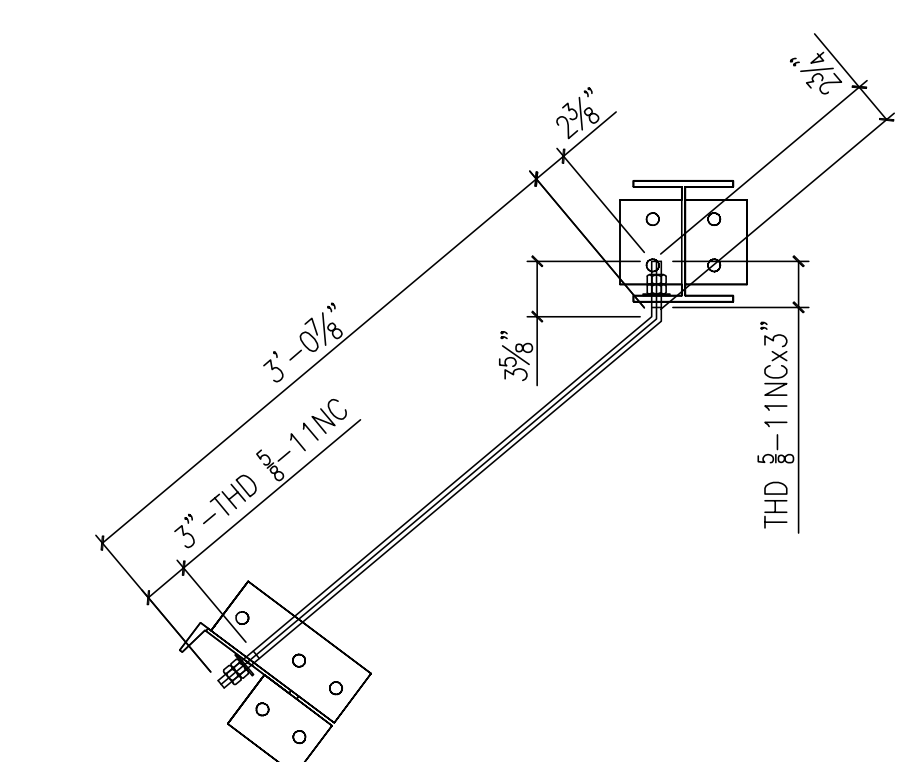
NO.	BY	DATE	REVISION			
E DWG	E2		PROJECT DEER LAKES PARK - RESTROOM UPGRADE			
MATERIAL	A36 UN		LOCATION VARIOUS			
ELECTRODES	E70XX (LH)		OWNER PA DEPT. OF PUBLIC WORKS			
HOLES	13/16"Ø UN		FABRICATOR HIGHLAND STEEL			
BOLTS	3/4"Ø A325 UN		CHANNEL DETAILS			
CLEANING	PER SPECS	DRN BY T. McCONNELL	CKD BY MT	SCALE	NOTED	
SHOP PAINT	SEE SH E2 NOTES	DRN DATE 7-30-02	CKD DATE 7-30-02	DWG		
			ARM-001-1			
			JOB NO			
			ARM-001			
			SHEET 12 OF 14			

HIGHLAND STEEL, INC.
 1037 DELAUM ROAD
 ST. MARYS, PENNSYLVANIA 15857
 PH: 814-834-9456 FAX: 814-834-6456

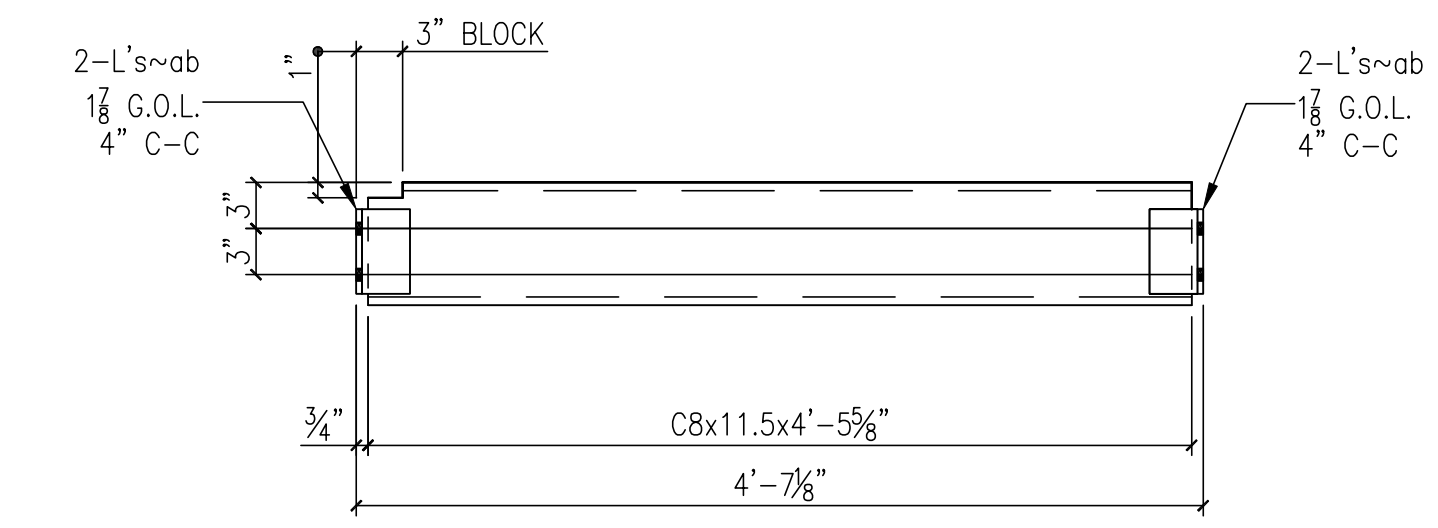
D
 SIZE
 REVISION



8 ~ PURLINS ~ 14-P1

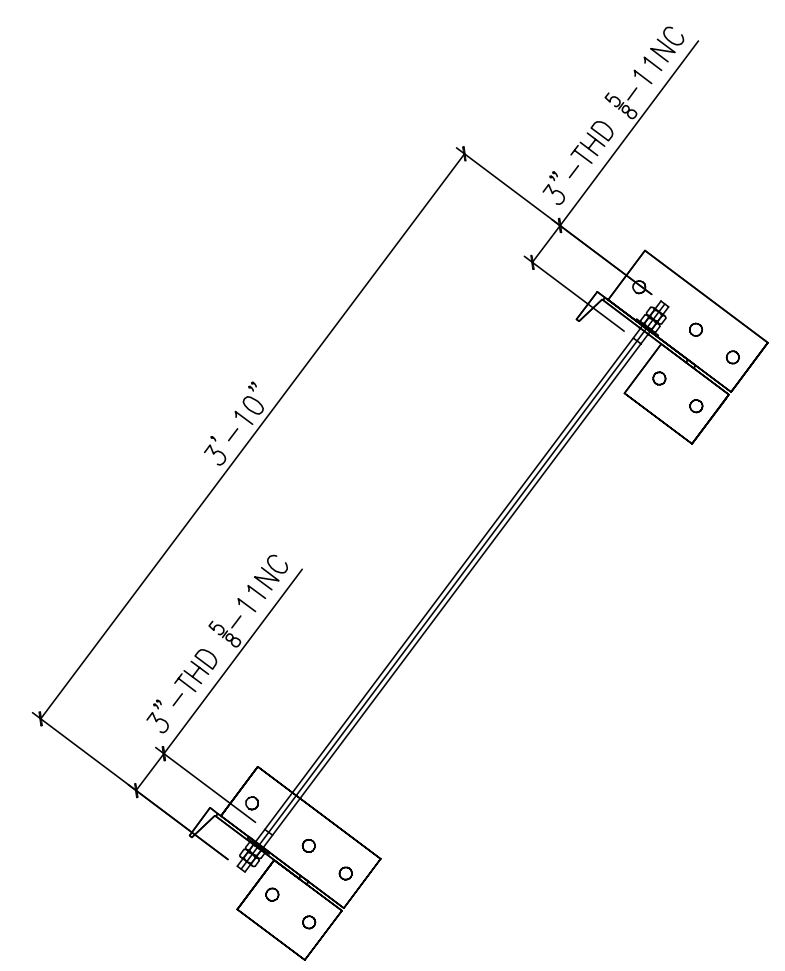


2 ~ SAG RODS ~ 14-SG1

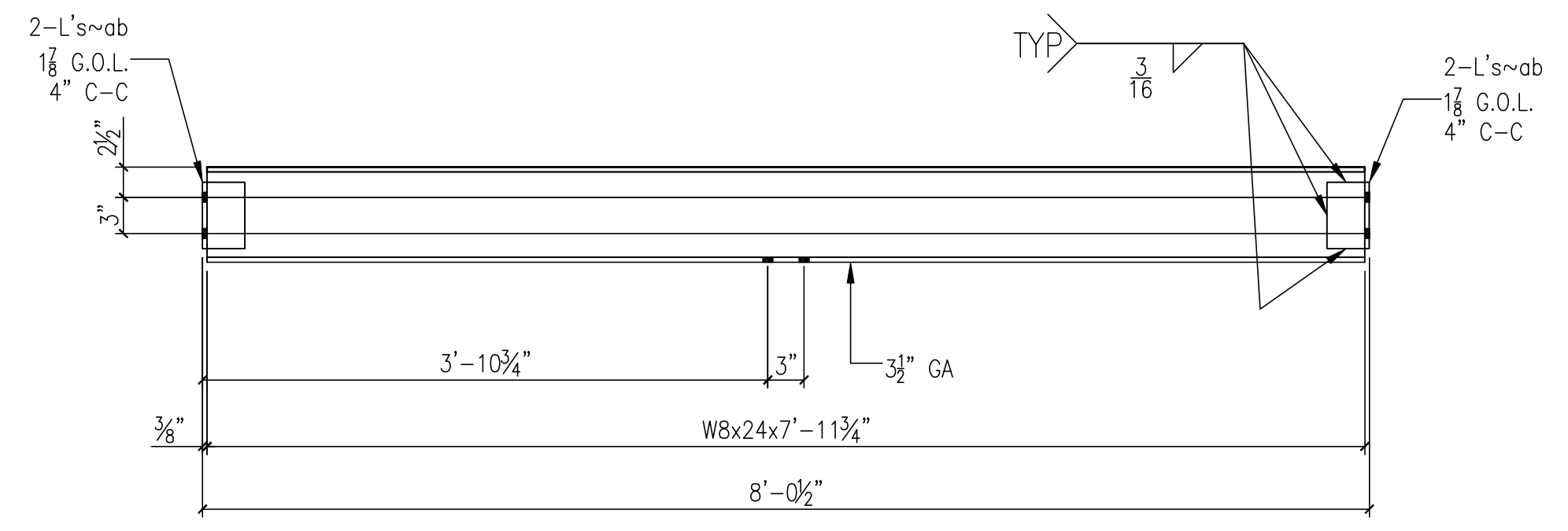


8 ~ PURLINS ~ 14-P2L (AS SHOWN)

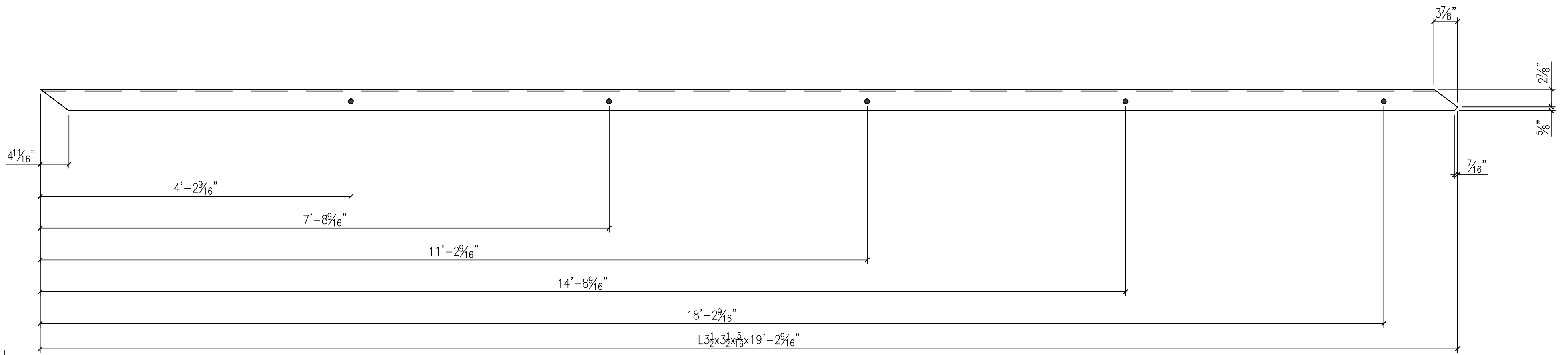
8 ~ PURLINS ~ 14-P2R (OPP HAND)



6 ~ SAG RODS ~ 14-SG2

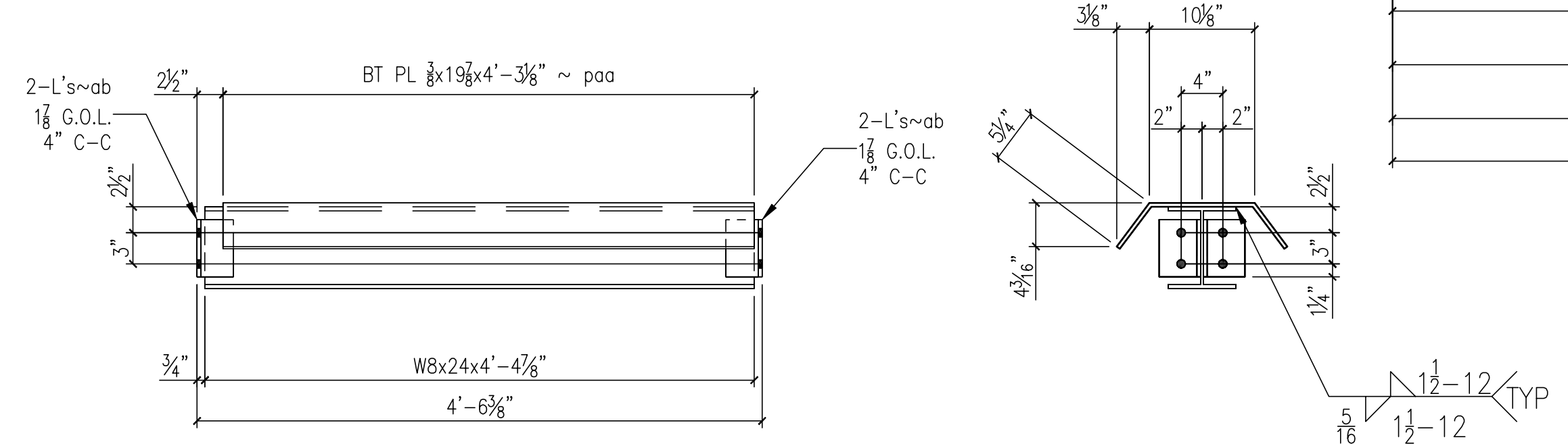


ONE ~ PURLIN ~ 14-P3



2 ~ RIDGE ANGLES ~ 14-RA1L (AS SHOWN)

2 ~ RIDGE ANGLES ~ 14-RA1R (OPP HAND)



2 ~ PURLINS ~ 14-P4

BILL OF MATERIAL						
PC MARK	QU.	MATERIAL	LENGTH		REMARKS	WEIGHT
			FT	IN		
14-P1	8	C 8x11.5	7	11 3/4		734
ab	16	L 4x3-1/2x3/8	0	5 1/2		67
agL	8	L 4x3-1/2x3/8	0	10		61
agR	8	L 4x3-1/2x3/8	0	10		61
14-P2L	8	C 8x11.5	4	5 5/8		411
ab	32	L 4x3-1/2x3/8	0	5 1/2		133
14-P2R	8	C 8x11.5	4	5 5/8		411
ab	32	L 4x3-1/2x3/8	0	5 1/2		133
14-P3	ONE	W8x24	7	11 3/4		192
ab	4	L 4x3-1/2x3/8	0	5 1/2		17
14-P4	2	W8x24	4	4 7/8		212
paa	2	PL 3/8x19 7/8	4	3 1/8	BENT	216
ab	8	L 4x3-1/2x3/8	0	5 1/2		34
14-T1	2	TS4x4x5/16	8	1 1/4	PLAIN MATL	240
14-SG1	2	SAG ROD			THREADED & BENT	
	2	RD-5/8" ø A307	3	4 1/2	W/ (8)HHN & (4)FW	7
14-SG2	6	SAG ROD			THREADED	
	6	RD-5/8" ø A307	3	10	W/ (24)HHN & (12)FW	24
14-RA1L	2	L3-1/2x3-1/2x5/16	19	2 9/16		277
14-RA1R	2	L3-1/2x3-1/2x5/16	19	2 9/16		277
					TOT. WT.	3505

NO.	BY	DATE	REVISION		
E DWG	E2		PROJECT DEER LAKES PARK - RESTROOM UPGRADE		
MATERIAL	A36 UN		LOCATION VARIOUS		
ELECTRODES	E70XX (LH)		OWNER PA DEPT. OF PUBLIC WORKS		
HOLES	13/16" ø UN		FABRICATOR HIGHLAND STEEL		
BOLTS	3/4" ø A325 UN		RAFTER DETAILS		
CLEANING	PER SPECS	DRN BY T. McCONNELL	CKD BY MT	SCALE NOTED	
SHOP PAINT	SEE SH E2 NOTES	DRN DATE 7-30-02	CKD DATE 7-30-02	DWG	
				ARM-001-1	
				JOB NO	ARM-001
				REVISION	
					SHEET 14 OF 14

HIGHLAND STEEL, INC.
 1037 DELAUM ROAD
 ST. MARYS, PENNSYLVANIA 15857
 PH: 814-834-9456 FAX: 814-834-6456